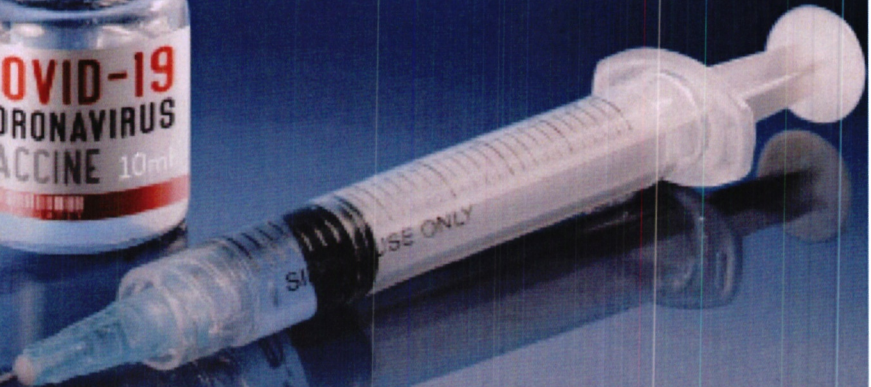
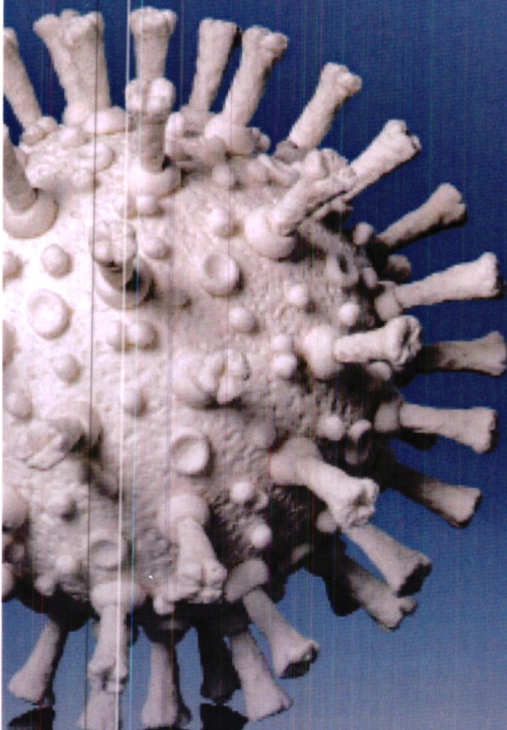


Mr. D. Chama
Pls find
02/07

Scanned

**SPECIAL AUDIT REPORT OF THE AUDITOR-GENERAL
ON
COVID 19 VACCINE ROLL OUT
FOR
BARINGO COUNTY
AS AT 31 March, 2022**

PAPERS LAID	
DATE	11 th OCT 2022
TABLED BY	SENATE MAJORITY LEADER.
COMMITTEE	
CLERK AT THE TABLE	M. ADSIBODDU



June 2022

LIST OF ABBREVIATIONS	III
LIST OF TABLES.....	IV
1.0 EXECUTIVE SUMMARY	1
1.1. Background and Introduction	1
1.2. Audit Scope, Limitations and Mitigation.....	1
1.3. Audit Approach and Methodology	1
1.4. Report Summary	2
1.4.1 Doses Received and Administered.....	2
1.4.2 Budget	2
1.4.3 Sources and Distribution of Vaccines.....	2
1.4.4 Storage of Vaccines.....	2
1.4.5 Disposal of Vaccines.....	2
1.4.6 Human Resource Matters.....	3
1.4.7 Coordination of Players	3
1.4.8 Monitoring and Supervision	3
1.4.9 Conclusion and Recommendation	3
2.0 BACKGROUND AND INTRODUCTION.....	4
2.1. Objective of the Audit.....	4
2.2. Terms of Reference.....	5
2.3. Scope of the Audit and Limitations	7
2.3.1 Scope	7
2.3.2 Limitations	7
2.4. Audit Approach and Methodology	8
2.4.1 Document Review	8
2.4.2 Analytical Review	8
2.4.3 Physical Verification	8
2.4.4 Interviews	9
2.5. Audit Phases	9
2.6. Report Structure	9
3.0 DETAILED FINDINGS.....	11
3.1 Budget and Sources of Vaccines	11
3.1.1 Unconfirmed Funding of Covid-19 Vaccination Activities.....	11
3.1.2 Sources of Vaccines.....	11

3.2	Storage of Vaccines	12
3.2.1	Storage at the County and Sub- Counties Stores.....	12
3.2.2	Storage at the Facilities Level.....	14
3.3	Distribution of Vaccines	16
3.3.1	Distribution at County Level.....	16
3.4	Utilization of Vaccines	17
3.4.1	Administered Doses.....	18
3.4.2	Expired Doses.....	18
3.4.3	Wasted Doses.....	18
3.4.4	Unexplained Vaccine Variances.....	19
3.5	Disposal of Vaccines	19
3.6	Human Resource Matters	22
3.7	Coordination of Players	24
3.8	Monitoring and Supervision	26
4.0	IRREGULARITIES AND WEAKNESSES IN MANAGEMENT AND INSTITUTIONS CONTROLS OF VACCINES AND RECOMMENDATIONS	30
5.0	CONCLUSION	32
6.0	APPENDICES	33

LIST OF ABBREVIATIONS

The following abbreviations are used in this Report

Abbreviation	Full Name
eLMIS	Electronic Logistics Management Information System
FIFO	First In, First Out
GOK	Government of Kenya
HR	Human Resource
KEPI	Kenya Expanded Immunization Programme
MOH	Ministry of Health
NVIP	National Vaccines and Immunization Program
ULT	Ultra-Low Temperatures
UNICEF	United Nations International Children's Emergency Fund
WHO	World Health Organization

LIST OF TABLES

TABLE 1- TERMS OF REFERENCE	5
TABLE 2 - INTERVIEWS	9
TABLE 3- WEAKNESSES IN BUDGETING AND EXPENDITURE	11
TABLE 4 - STORAGE AT SUB COUNTY LEVEL	13
TABLE 5- STORAGE AT THE FACILITY LEVEL.....	15
TABLE 6: DISTRIBUTION AT COUNTY LEVEL	16
TABLE 7 - UTILISATION OF VACCINES AT COUNTY LEVEL	18
TABLE 8 - DISPOSAL OF VACCINES.....	20
TABLE 9 - TRAINING AT COUNTY AND FACILITY LEVEL.....	23
TABLE 10- COORDINATION AT COUNTY LEVEL.....	26
TABLE 11- MONITORING AND SUPERVISION AT COUNTY AND FACILITY LEVEL	27
TABLE 12 : IRREGULARITIES AND WEAKNESSES AT THE COUNTY AND SUB COUNTY LEVEL	30

1.0 EXECUTIVE SUMMARY

1.1. Background and Introduction

The Auditor-General carried out a Special Audit on the efficiency and effectiveness of Covid-19 vaccines roll-out in Kenya. The Audit covered the period from inception of the vaccination exercise in March 2021 to 31 March, 2022. The primary objective of the audit was to determine the efficiency and effectiveness of the Covid-19 vaccines rollout in the Forty-Seven (47) Counties. This report, however, specifically covers the audit performed for the Covid-19 vaccines rollout in Baringo County. The audit involved the review of budget, sources of the vaccines, storage, distribution, utilization and disposal of the vaccines, human resource financing, coordination of players, monitoring and supervision.

The Government of Kenya commissioned use of the Chanjo System to manage the Covid-19 vaccines rollout and utilized the existing immunization structures for other routine vaccines.

1.2. Audit Scope, Limitations and Mitigation

The audit reviewed all processes relating to Covid-19 vaccines immunization which included budgeting, administration, disposal of the expired stocks, governance, and monitoring structures.

Challenges experienced during the audit included; lack of definition of most of the vaccinating facilities in the Chanjo System, inadequate and incomplete vaccine inventory records. There was also heightened insecurity in some of the Sub Counties coupled with the geographical vastness of the County and poor road network resulted in all the facilities not being covered. The Audit Team put in place measures to mitigate the challenges, which resulted in 96% coverage of the vaccinating facilities.

1.3. Audit Approach and Methodology

Audit exercise entailed planning, piloting of the vaccine roll-out audit in one of the Counties, before rolling out to the rest of the 47 Counties. Meetings were held with the auditee and evidence was collected through interviews, document reviews, Data

Analytics, analysis of audit evidence, among others. The audit was performed using International Standards of Supreme Auditing Institutions (ISSAIs).

1.4. Report Summary

1.4.1 Doses Received and Administered

Baringo County received 183,000 doses of various types of vaccines during the period under review. Out of the total Covid-19 Vaccine doses received in the County, 144,717 doses were administered while 4,599 vaccine doses were still in stock at the time of the audit cut-off date of 31 March, 2022. The balance of 33,684 vaccine doses included unexplained deficit variance of 23,035 as at 31 March, 2022.

1.4.2 Budget

Review of the County's health services budget for the financial year 2021/2022 revealed that the County Government of Baringo did not budget for the Covid-19 vaccination exercise but used the budget for normal immunization to cater for the roll out exercise.

1.4.3 Sources and Distribution of Vaccines

The Source of vaccines was from the Government of Kenya (GoK). These vaccines were received in Baringo County through the Eldoret Regional Store. The distribution flow was from Regional Store, County Store, and Sub-County Stores to facilities which administered the vaccines.

1.4.4 Storage of Vaccines

The Baringo County Stores complied to some extent with the storages conditions which had been set out by the MOH for Covid-19 Vaccines. However, weaknesses were noted in the storage at the facilities including lack of contingency plan in case of power failure, equipment breakdown or cold chain breaches.

1.4.5 Disposal of Vaccines

The Special Audit noted that a total of 22,476 doses had expired, were damaged or had gone to waste. Out of the 22,476 expired doses, 5,336 had been disposed with other

hospital waste while the balance of 17,140 was still held in the Sub County stores and the facilities.

1.4.6 Human Resource Matters

The financing for health care personnel was to be funded by the Government of Kenya, Donors and development partners. Baringo County Management explained that there were undertaken through the assistance of development partners. However, there were no proper records of documentation maintained for the training undertaken or provided.

1.4.7 Coordination of Players

The coordination of the exercise was done by the Baringo County Covid-19 Vaccine Deployment and Vaccination Taskforce. However, the appointment letters and the minutes of the Task Force were not provided for audit review.

1.4.8 Monitoring and Supervision

The Audit established that Covid-19 Vaccines roll-out was monitored and supervised by a Committee to ensure smooth implementation of polices and guidelines issued from time to time by the National Government.

1.4.9 Conclusion and Recommendation

The audit concluded that the roll-out of the Covid-19 Vaccines was effective. However, weaknesses were noted in some of the processes such as failure to Budget for the roll-out activities, practical adherence to waste disposal regulations, inadequate staff and training at the facilities and inadequate access the Chanjo due to lack of data bundles to the staff updating information in the system. This impacted on the real time recording of information in the system and unexplained deficit of 23,035 vaccine doses valued at Kshs.16,000,589 based on the average vaccine cost during the period.

The existing immunization structures for routine vaccines were functional but require scale up to handle unforeseen pandemics. Owing to the weaknesses noted, it is recommended that the Baringo County Government should work closely with the National Government to strengthen the existing immunization structures and staffing to meet international standards.

2.0 BACKGROUND AND INTRODUCTION

Kenya received its first consignment of Astra Zeneca-Oxford Covid-19 vaccine in March 2021 as part of the COVAX facility. This was followed by more vaccines of Moderna, Johnson & Johnson (Janssen), Pfizer and Sinopharm from other development partners. The Ministry of Health (MOH) launched a campaign and kicked off the deployment plan for the Covid-19 vaccines roll out on 5 March, 2021 with priority being given to frontline health workers and essential staff including security personnel. According to the National Covid-19 vaccine deployment plan, the first vaccine plan was developed in March 2021 and was subsequently revised by the MOH in August 2021 in an effort to cover the entire adult population in the country.

Baringo County received its first consignment of 6,000 doses of Astra Zeneca-Oxford Covid-19 vaccines on 8 March, 2021 through the Eldoret Regional Vaccines and was distributed to the Baringo County Referral Hospital and the Sub Counties.

As at 31 March, 2022, the Special Audit Team established the County had received a total of 183,000 doses as tabulated below:

Type of Vaccine	Number of Doses
Oxford/AstraZeneca	57,710
Janssen (Ad26.COVS-5)	50,100
Moderna	16,990
Pfizer	58,200
Total	183,000

2.1. Objective of the Audit

The primary objective of the audit was to determine the efficiency and effectiveness of the Covid-19 vaccine roll-out in Baringo County. This was achieved through; review of budget, sources of the vaccines, storage, distribution, utilization and disposal of the vaccines, human resource, coordination of players and monitoring and supervision.

2.2. Terms of Reference

The following Terms of Reference (TORs) guided the Special Audit;

Table 1- Terms of Reference

TOR	Detailed Procedures
1. Budget	<ul style="list-style-type: none"> • How much was set aside for vaccines and related activities and how the figures were arrived at? • Budget approval process • Allocation of the funds i.e. specific budget items • Source of funds i.e. GOK and Donors
2. Sources of Vaccines	<ul style="list-style-type: none"> • GOK Procured vaccines, development partners donations and COVAX etc. • Procurement process for GOK procured vaccines • Local and international approval of vaccines and syringes • Types and quantities from the different sources as well as shelf life of vaccines and prices where applicable • Consider whether vaccines came with syringes or not and the effect • Shelf life of vaccines (expiry) • Batch Numbers • Storage of defective vaccines/ expired • Recording of vaccines • Government clearance process for vaccines from outside the country • WHO rating of effectiveness of various vaccines • Cost vs budget
3. Storage of Vaccines	<ul style="list-style-type: none"> • Manufacturer's requirements for storage of vaccines • Local storage capacity • Local storage conditions • Handling requirements • Transportation requirements • Recording including batch numbers • Stocking levels, process of issuing of vaccines as well as duration • Recording and accountability • Duration in store • Storage of defective vaccines/Syringes • Cost Vs Budget
4. Distribution	<ul style="list-style-type: none"> • How vaccines were distributed/logistics? • Quantities of vaccines distributed • Proportion of vaccines distributed per region

TOR	Detailed Procedures
	<ul style="list-style-type: none"> • Basis of quantities and proportions distributed e.g. population • Storage issues • Recording and accountability • Cost vs budget
5. Utilization	<ul style="list-style-type: none"> • Awareness creation • Intended/ target population • Uptake per type of vaccine • Rate of transition from first to second dose • Possibility of delayed administration of second dose • Matters relating to booster doses • Numbers expired • Recording and Accountability i.e. vaccines received, utilized and balance and expired • Cost vs budget
6. Disposal	<ul style="list-style-type: none"> • Number of vaccines disposed • Criteria for disposal • Recording and accountability • Reports and feedback • Reconciliation of what was procured, utilized and unused and disposal • Costs vs budgets
7. Human Resource Matters (National and County Staff)	<ul style="list-style-type: none"> • Number of persons involved • Roles and responsibilities • Expertise (capacity/skills) • Duplication of roles is any • Selection and appointment criteria • Training Plans and Roll Out • Costs vs budgets
8. Coordination of players	<ul style="list-style-type: none"> • Who are the key players? • Are the roles and responsibilities of the players clear? • Is there a framework for coordination and communication of players? • Approval and appointment of taskforce and committees • Costs vs budgets
9. Monitoring and supervision	<ul style="list-style-type: none"> • Is there a framework for coordination and communication of players? • Approval and appointment of taskforce and committees • Costs vs budgets

2.3. Scope of the Audit and Limitations

2.3.1 Scope

The audit reviewed all processes from the inception of Covid-19 vaccine roll out, through budgeting to administration and disposal including the governance and monitoring structures. The period covered was from the inception in March 2021 to 31 March, 2022.

2.3.2 Limitations

The Special Audit experienced challenges and limitations which were mitigated in several ways in order not to negatively affect the quality and result of findings. Some of the challenges and measures taken included:

- i. Three facilities were closed as at the time of the audit as the Nursing Officer in charge was on leave despite the advance communication of the audit. The persons available at the facility did not have complete information on the vaccination roll out. The Audit Team carried out phone interviews to obtain the required information.
- ii. Inaccessibility of some facilities due to poor road network and insecurity. The Audit Team conducted phone interviews for the few inaccessible facilities.
- iii. The vastness of the County made it difficult for the Audit Team to visit all the facilities. The Audit Team split into Sub-Teams to enhance coverage.
- iv. Vaccine damages and wastage were not recorded by the vaccinating facilities. This was mitigated by referring to the vaccine wastage uploaded in the Chanjo System.
- v. Manual records in some facilities were found to be inaccurate. Under such circumstances, the Audit Team mainly relied on the Chanjo System.
- vi. Vaccine stock movements in the Chanjo System indicated that the vaccines received from Eldoret Regional Store had all been issued to vaccinating facilities while in reality, they would either be at the Sub County store or issued to multiple facilities. This was mitigated by undertaking physical vaccine stocks at the affected stores and facilities and reconciling to the Chanjo System movements.

- vii. Thirty Five (35) facilities were sharing the Chanjo System log in credentials with other Sub County stores and facilities. The Audit Team relied on the ledgers and carried out physical verification of the facility recorded in the ledger. One Sub County however did not maintain a vaccine ledger but had a number of vaccinating facilities reporting using the Sub County store credentials.

2.4. Audit Approach and Methodology

The Special Audit Team held entry and exit meetings with the Baringo County Management Team on 9 May, 2022 and 2 June, 2022 respectively. During the entry meeting, uniform and detailed work plans were developed and adopted which were then applied in the execution of the audit.

The following were the main evidence gathering methods applied during the audit execution:

2.4.1 Document Review

To effectively plan for the audit and as a source of audit evidence, the Audit Team reviewed various documents including the vaccine order sheets, vaccine store ledgers, minutes of the Baringo County Vaccine deployment and vaccination taskforce, various training reports, outreaches, co-ordination activities and S11 and seizure forms at facility level.

2.4.2 Analytical Review

The Audit Team extracted the vaccine data from the Chanjo System and carried out a comparative analysis with records maintained at the County stores and vaccinating facilities.

2.4.3 Physical Verification

The Audit Team carried out audit verification in the seven (7) Sub County stores and 122 vaccinating facilities in Baringo County. Six (6) facilities were not verified due to insecurity or unavailability of staff in the facilities. The details are as indicated in **Appendix 1**.

2.4.4 Interviews

The Audit Team interviewed senior officers from the Department of Health in the County Government to clarify the various issues and to assist in making an informed report as detailed below: -

Table 2 - Interviews

	Name	Organization	Designation
1.	Dr. Richard Rotich	Baringo County	County Executive Committee Member- Health
2.	Enock Kiplagat	Baringo County	County Executive Committee Member- Treasury
2.	Dr. Patrick Boruett	Baringo County	County Director of Health
3.	Lenah Kosgei	Baringo County	County EPI Logistician
4.	Micah Cherop	Baringo Count	County Disease Surveillance Coordinator

2.5. Audit Phases

The audit was divided into Two Phases; Phase One involved review of processes at the National Treasury, Office of the Controller of Budget and Ministry of Health. It also involved analysis of data maintained in eMIS, Chanjo System and Kenya Health Information System. The information was then shared with the Audit Teams to inform the next audit phase.

Phase Two involved review of processes, data and verifications at Baringo Regional Store Sub County Stores and the vaccinating facilities in the County. This Phase also involved verification and interview of staff.

2.6. Report Structure

This report is presented in the following format:

- i. Executive Summary,
- ii. Background and Introduction,
- iii. Detailed Findings,
- iv. Irregularities and weaknesses in management and controls of vaccines in Institutions
- v. Conclusion, and
- vi. Appendices.

The report should be read in its entirety in order to comprehend fully the approach and findings of our work. The report has covered analysis and facts as understood with the aim of informing The National Treasury and the Ministry of Health of the status of the Vaccines Roll out in the Baringo bearing in mind the challenges and limitations experienced.

3.0 DETAILED FINDINGS

3.1 Budget and Sources of Vaccines

3.1.1 Unconfirmed Funding of Covid-19 Vaccination Activities

Review of the County's health services budget for the financial year 2021/22 revealed that the County did not budget for the Covid-19 vaccination activities. The Covid-19 vaccination costs, including transportation, training and capacity building and procurement of auxiliary services such as syringes and safety boxes, could not therefore be traced to a specific budget, an indication they were not budgeted for. This was contrary to Regulations 29 (1) of the Public Finance Management (County Governments) Regulations, 2015 which states that the accounting officer shall ensure that the draft estimates relating to her or his department are prepared in conformity with the Constitution, the Act and these Regulations. Management however, indicated that the expenditures were met by Partners, but this was not supported by way of any documentary evidence such as agreements.

3.1.2 Sources of Vaccines

The County received 183,000 vaccine doses between 01 March, 2021 and 31 March, 2022 from the National Government. Review of the County's Health Services budget for the financial year 2021/2022 budget revealed that there were no provisions for the Covid-19 vaccine roll-out. Further, the Special Audit revealed the following anomalies as summarised in **Table 3** and detailed in **Appendix 2**.

Table 3- Weaknesses in Budgeting and Expenditure

Observation/Findings	Number of Compliant (Counties and Sub-Counties)	Number of Non-Compliant (Counties and Sub-Counties)
Failure to budget for associated Covid-19 vaccination costs, including transportation, training and procurement of auxiliary services such as syringes and safety boxes.	0	7

Observation/Findings	Number of Compliant (Counties and Sub-Counties)	Number of Non-Compliant (Counties and Sub-Counties)
Lack of budgetary support for Covid-19 from donors/National government	0	7
Failure to spent budgetary support on Covid-19 vaccination.	0	7
Failure by the Sub County/Facility to finance Distribution of Vaccines, Outreaches, Trainings costs related to Covid-19 vaccination;	0	7

3.2 Storage of Vaccines

According to World Health Organization (WHO) Guidelines (Covid-19 vaccination: supply and logistics guidance, 12 February, 2021) the Covid-19 vaccines should be stored as follows:

- Pfizer should be maintained at -80 °C to -60 °C in Ultra Low Temperatures (ULT) freezer, and for Undiluted thawed vaccine at +2 °C to +8 °C
- Moderna should be maintained at -25 °C to -15 °C in ULT freezer, and unopened vials can be stored refrigerated between 2 °C to 8 °C for up to 30 days prior to first use.
- Oxford/AstraZeneca should be maintained at 2 °C to 8 °C
- Further, Centre for Disease Control (CDC) clinical guidance for Janssen Covid-19 Vaccine recommend storing of the vaccine at temperatures between 2°C and 8°C.

The storage conditions applied to all stores including County, Sub County and facility stores. However, a visit to the 7 Sub County stores and 122 facilities revealed the following anomalies: -

3.2.1 Storage at the County and Sub- Counties Stores

Review of documents provided for audit and physical verification carried out at the 7 Sub-County stores revealed issues as summarized in **Table 4** and detailed in **Appendix 3**.

Further, Baringo County did not have its own store but used the Baringo Central Sub-County to coordinate the collection of the vaccines from Eldoret Regional store.

Table 4 - Storage at Sub County Level

Criteria	Number of Compliant Sub County Stores	Number of Non-Compliant Sub County Stores
Cold Chain and Supply Logistics		
Store has sufficient security to prevent loss of Covid vaccines as well as prevent unauthorized access	5	2
Store has sufficient space for orderly receipt, warehousing, and dispatch of vaccines including a quarantine area for isolation when necessary, isolation of faulty packs and recalled goods. The vaccines and areas concerned were appropriately identified.	3	4
Broken or damaged items are withdrawn from usable stock and stored separately	7	0
There was sufficient lighting necessary to enable all operations to be carried out accurately and safely.	7	0
All Covid-19 vaccines stored off the floor	7	0
Refrigerated and freezing storage environments fitted with signals to indicate that refrigeration has failed. The signal permitted resetting only by the authorized person.	7	0
The vaccines issued on a FIFE method and guided by the expiry date	7	0
There was a contingency plan in case of power failure, equipment breakdown, or cold chain breach	7	0
There were secure measures to ensure that rejected vaccines cannot be used. Rejected vaccines are stored separately from other products while awaiting destruction or return to the supplier	7	0
There are written procedures and a sanitation program indicating the frequency of cleaning and the methods used to clean the premises and storage areas.	0	7
There was a cleaning log that must be completed, signed, and checked by the appropriately designated person.	0	7
There was a written procedure and a program for pest control. The pest control agents used did not pose any risk of contaminating the vaccines. There was a site flow plan indicating where the bait stations are situated	0	7
There were appropriate written procedures for the clean-up of any spillage to ensure the complete removal of any risk of contamination	0	7

Criteria	Number of Compliant Sub County Stores	Number of Non-Compliant Sub County Stores
The Covid-19 vaccines were stored in such a way as to prevent contamination or cross-contamination.	7	0
Storage Conditions		
The storage conditions were compatible with the storage conditions specified on their labels. (Storage facilities protected goods from deterioration.)	7	0
The warehouse was maintained at a temperature not exceeding 30 °C, and relative humidity not exceeding 75% Relative humidity (WHO zone IVb requirements) at all times.	7	0
The storage conditions of the refrigerators are as per the vaccine manufacturer's recommendations (Refrigerated (2°C to 8°C)	7	0
There were continuous temperature monitoring devices. In addition, there were written procedures describing the action in case of temperature deviating outside of the set standards and conditions.	7	0
The store had stock in the Cold Room and were physically counted and grouped per vaccine and Batch Numbers	7	0

From the foregoing, the Special Audit Team confirmed that the Baringo County Sub County Stores did not have adequate written procedures for sanitation, pest control and clean-up of any spillage. There was also no cleaning log signed and checked by the appropriately designated person.

3.2.2 Storage at the Facilities Level

Review of documents provided for audit and physical verification carried out at the 122 facilities revealed issues as summarized below in **Table 5** and detailed in **Appendix 4**.

Table 5- Storage at the Facility Level

Observations/Findings	Number of in Compliant Facilities	Number of Non-Compliant Facilities
Store has sufficient security to prevent loss of Covid vaccines as well as prevent unauthorized access	115	7
Broken or damaged items are withdrawn from usable stock and stored separately	121	1
There was sufficient lighting necessary to enable all operations to be carried out accurately and safely.	119	3
All Covid-19 vaccines stored off the floor	122	0
Refrigerated and freezing storage environments fitted with signals to indicate that refrigeration has failed. The signal permitted resetting only by the authorized person.	72	49
The vaccines issued on a FIFE method and guided by the expiry date	122	0
There was a contingency plan in case of power failure, equipment breakdown, or cold chain breach	86	36
General Storage Areas		
There were Secure measures to ensure that rejected vaccines cannot be used. Rejected vaccines are stored separately from other products while awaiting destruction or return to the supplier	111	11
There are written procedures and a sanitation program indicating the frequency of cleaning and the methods used to clean the premises and storage areas.	0	122
There was a cleaning log that must be completed, signed, and checked by the appropriately designated person.	0	122
There were appropriate written procedures for the clean-up of any spillage to ensure the complete removal of any risk of contamination	0	122
Storage Conditions		
The storage conditions of the refrigerators are as per the vaccine manufacturer's recommendations (Refrigerated (2°C to 8°C))	122	0
There were continuous temperature monitoring devices. In addition, there were written procedures describing the action in case of temperature deviating outside of the set standards and conditions.	113	9
The store had stock in the Cold Room and were physical counted and grouped per vaccine and Batch Numbers.	109	13

In view of the above, the Special Audit Team confirmed that a significant number of Baringo County Covid-19 vaccinating facilities did not have written procedures on sanitation, clean-up of any spillage and maintenance of cleaning logs.

3.3 Distribution of Vaccines

Distribution at County Level

Documents provided for audit revealed that Covid-19 Vaccines on arrival in the Country should be transferred to the Central Stores which in turn distributes to the Regional Stores that in turn distributes to the County Stores. The County Stores should in turn distribute to the Sub County Stores which in turn distributes to the facilities from where the vaccine is administered. However, this was not the case for Baringo County. Instead, the Covid-19 vaccines were received by the Baringo Central Sub County Store from the Eldoret Regional Store which in turn distributed to the other Sub Counties and to the Baringo County Referral Hospital. The Referral Hospital was used to distribute vaccine to other vaccinating facilities within the Baringo Central Sub County.

The 183,000 vaccines received in the Baringo County as at 31 March, 2022 was therefore distributed to the Sub-Counties and Facilities as summarized in **Table 6** and detailed in **Appendix 5:**

Table 6: Distribution at County Level

Vaccine Type	Doses Received from Regional Store	Doses Dispatched to Sub Counties / Facility in Baringo Central	Variance
Janssen	50,100	46,810	3,290
Moderna	16,990	16,598	392
Oxford / AstraZeneca	57,710	53,680	4,030
Pfizer	58,200	50,184	8,016
Grand Total	183,000	167,272	15,728

*The variance of 15,728 vaccine doses represent unexplained stock movement between the stores and the facilities.

According to the National Policy Guidelines on Immunization, 2013, storage and transportation of vaccines and diluents, at all stages of vaccine transportation a cold chain monitor must always accompany all vaccines whether in cold boxes, vaccine carriers or

portable fridges and the temperature reading must be maintained between +2°C and +8°C including age of conditioned ice packs. Diluents need not be transported at +2°C to +8°C unless they are being transported for outreach activities.

The Special Audit revealed that 19 out of 122 vaccinating facilities failed to monitor temperature during transportation of vaccines. As a result, it may not be possible to ascertain if they deviated from the specified range.

3.4 Utilization of Vaccines

Ordinarily, Covid-19 vaccines flow through four levels before being administered; National Vaccine Store (NVS), Regional Vaccine stores (RVS), Sub-County Vaccine stores and Health Facilities. Utilization of vaccines including Covid-19 takes place at a vaccinating facility.

Examination of data maintained in the Chanjo System revealed that 183,000 Covid-19 vaccine doses had been received at the County as at 31 March, 2022.

Documents provided for audit revealed that there were 94 facilities that had been mapped in the Chanjo System. In addition, 4 Sub County stores also doubled up as health facilities. Analysis of data maintained by the Chanjo System and physical verification revealed that there were 35 vaccinating facilities not mapped in the Chanjo System and were sharing log on credentials with the defined facilities or the Sub County Stores.

Out of the total 183,000 Covid-19 Vaccine doses received in the County, a total of 144,717 doses were administered, 4,599 vaccine doses were in stock while the balance of 23,451 was expired, damaged wasted or had gone to waste as at 31 March, 2022 as summarized **Tables 7** and detailed in **Appendix 6**. There was however an unexplained deficit variance of 23,035 vaccine doses.

Table 7 - Utilisation of Vaccines at County Level

Vaccine Type	Doses Received	Doses Administered	Doses in Stock	Expired Doses	Damaged Doses	Wasted Doses	Unexplained For Doses	Estimated Price per Dose	Estimated Amount (Kshs.)
Janssen	50,100	37,462	4,349	1,193	5	258	6,833	753	5,145,249
Moderna	16,990	17,860	28	362	-	-102	-1,158		-
Oxford / AstraZeneca	57,710	63,761	-	5,077	-	516	-11,644		-
Pfizer	58,200	25,634	222	15,844	-	298	16,202	670	10,855,340
Total	183,000	144,717	4,599	22,476	5	970	23,035		16,000,589

3.4.1 Administered Doses

The Chanjo System indicated that a total of 144, 717 doses had been administered by the County between 1 March, 2021 to 31 March, 2022. The various vaccine doses administered are as summarized as follows:

Vaccine Type	First Doses	Second Doses	Booster Doses	Grand Total
AstraZeneca	36,783	26,636	354	63,773
Moderna	11,494	6,183	133	17,810
Janssen	37,471	0	5	37,477
Pfizer	20,849	4,150	648	25,647
Total	106,597	37,026	1,140	144,717

3.4.2 Expired Doses

These were vaccine doses that had not been administered by the manufactures use- by date indicated on the vials totalling 22,476 doses. At the time of the Special Audit in May 2022; 5,336 doses had been disposed off together with other hospital waste while the balance of 17,140 were being held at the Sub County stores and the facilities.

3.4.3 Wasted Doses

These are vaccine doses that were not administered due to failure to utilize within the stipulated timeline upon opening of the vials. The Special Audit revealed that the Sub County stores and most facilities did not maintain records on wastages. However, the

Chanjo system reflected 4,008 wasted doses as at 31 March, 2022. The Special Audit Team revealed that wasted doses were being disposed off by the vaccinating facilities without maintaining records.

3.4.4 Unexplained Vaccine Variances

Documents provided for audit revealed that 183,000 vaccine doses were received in the County. However, reconciliation of the vaccines received, administered, in stock, expired, and wasted revealed an unexplained variance of 23,035 doses valued at Kshs 16,000,589.

The following weakness observed during the audit could have contributed to an unexplained variance: -

- a. Wastages not reported at the facilities,
- b. vaccines doses utilized during the outreaches or in facilities not defined in the Chanjo System may not have been subsequently updated, and
- c. Vaccination data was not entered accurately, causing over-administration in some batches and under-administration in others.

3.5 Disposal of Vaccines

The Special Audit noted that a total of 17,140 doses that were expired, damaged and wasted had not been disposed off while a total of 5,336 had been disposed off at the various facilities as at the time of audit.

Review of documents provided for audit revealed non-compliance with the disposal requirements as per Section 6.1 of the WHO Standard Operating Procedures (SOP) on waste management of Covid -19 vaccines vials and ancillary supply. The procedure states that any used or discarded Covid-19 vaccine vials MUST be collected safely and separately from the rest of the waste. Both the empty vials and those with remaining vaccine doses discarded at the end of the daily vaccination activity shall be collected and safely stored until they are collected for final treatment and disposal. These vials should be counted and recorded by the responsible Team for the purpose of vaccination activity analysis (e.g.

utilization, coverage, wastage, etc.). Further, Section 6.6 provides that neutralized Covid-19 vaccine vials can be safely disposed in a manner that is not accessible or reusable, and neither being an environmental nor a health threat. The findings on disposal of vaccines are as summarized in **Table 8** and detailed in **Appendix 7 and 8**.

Table 8 - Disposal of Vaccines

Observation	Sub County		Facilities	
	Number of Compliant	Number of Non-Compliant	Number of Compliant	Number of Non-Compliant
Lack of a waste management plan	7	0	122	0
Lack of budget for disposal of Covid-19 waste	0	7	N/a	122
Lack of NEMA clearance when transporting Covid-19 waste from one County to another or from one region to another for stores without NEMA approved Waste Disposal Site.	N/a	N/a	25	97
Failure to record or to account vaccine vials in the vaccine inventory report	0	7	15	107
Failure by the County/Store/facility to fill any application form for disposal of pharmaceutical waste issued by the Pharmacy and Poisons Board in compliance with the Guidelines for safe	N/a	N/a	N/a	N/a

Observation	Sub County		Facilities	
	Number of Compliant	Number of Non-Compliant	Number of Compliant	Number of Non-Compliant
management of pharmaceutical waste.				
Failure to dispose in a NEMA approved pharmaceutical disposal site in compliance with the Guidelines for safe management of pharmaceutical waste	1	6	13	109
Disposal of pharmaceutical waste without supervision by a Pharmacy and Poisons Board inspector OR Public Health Officer in compliance with the Guidelines for safe management of pharmaceutical waste.	1	6	95	27
Disposing without a certificate of safe disposal of pharmaceutical waste in compliance with the Guidelines for secure management of pharmaceutical waste	N/a	N/a	N/a	N/a
Disposing pharmaceutical waste without separating from the sharp waste and other healthcare wastes and the different wastes not securely	N/a	N/a	122	0

Observation	Sub County		Facilities	
	Number of Compliant	Number of Non-Compliant	Number of Compliant	Number of Non-Compliant
packaged in plastic bags or rigid containers which are clearly labelled as per the Guidelines for safe management of pharmaceutical waste and WHO Waste management of used Covid-19 vaccines vials and ancillary supply				
Failure to have a pharmaceutical waste stored in designated quarantine stores and away from usable pharmaceutical.	N/a	N/a	121	1
Lack of an incinerator, burning chamber or burning pit.	N/a	N/a	114	8

In the circumstances, the undisposed expired vaccines may pose a health risk to the general public and the health officers. In addition, failure to follow the disposal protocols for sharp and used vials may also pose a worse health risk to the general public and the health officers.

3.6 Human Resource Matters

Training at County Level

The health care workers were to be trained and were required to be competent on; Knowledge on Covid-19 disease, knowledge and skills in Covid-19 Vaccine demand creation, health facility preparation, safe vaccine administration, infection control practices, patient data management, adverse event reporting and management, documentation and

monitoring of vaccine utilization and logistics, communication, waste management, mental health and multi-disciplinary team work.

Immediately after the Covid-19 vaccines were rolled out, trainings for different level personnel in the National and County Governments were conducted. Baringo County management explained that trainings in the County were undertaken through the assistance of partners. However, the training plans, training timetable, the attendance list, trainee selection criteria and training reports and the respective donor agreements were not provided for audit review.

Review of the documents provided for audit revealed anomalies as summarized in **Table 9** and detailed in **Appendix 9** and **Appendix 10**.

Table 9 - Training at County and Facility Level

Observation/Findings	Sub-Counties		Facilities	
	Number of Compliant	Number of non-Compliant	Number of Compliant	Number of Non-Compliant
Sub-Counties were not represented in National training for ToT.	0	7	N/a	N/a
Counties and Sub-Counties Health Management Team not trained on Covid-19 immunization	7	0	113	9
Trainings not well spread to all necessary cadres	7	0	113	9
Lack of a training plan and trainings not done as per training plan	7	0	N/a	N/a
Lack of a specific training budget for Covid -19 immunization	2	5	N/a	N/a
Variance between budget and actual expenditure for training on Covid-19 vaccination.	7	0	N/a	N/a
Lack of details including designation, attendance dates,	5	2	N/a	N/a

Observation/Findings	Sub-Counties		Facilities	
	Number of Compliant	Number of non-Compliant	Number of Compliant	Number of Non-Compliant
financier of staff at national/County/Sub-County /facility				
Lack of adequate staff to carry out the Covid-19 vaccination	N/a	N/a	41	81
Lack of separation of roles and duties	N/a	N/a	81	41
Lack of prior training on Covid-19 including vaccine administration	N/a	N/a	119	3
Failure to use trained staff to train other staff	N/a	N/a	64	58

In the foregoing, the Special Audit Team could not establish the adequacy of Human Resources engaged in the Covid-19 vaccines roll out programme.

3.7 Coordination of Players

Coordination at County Level

According to the National Covid-19 Vaccine Deployment Plan 2021, the County Emergency Covid-19 Response Committee were to be adopted to form the Steering Committee. At Baringo County, Coordination at the County level was done by the County Health Management Taskforce made up of nine officers comprising of;

- County Director CDH (Chairperson)
- County EPI Logistician
- County Nursing Officer
- County Health Records and Information Officer
- County Disease Surveillance Officer
- County Health Promotion Officer
- County Public Health Officer/Community Strategy Focal Person
- ICT Officer
- Medical Superintendent Baringo County Referral Hospital

The Taskforce was formulated in a meeting held on 18 February, 2020 and was to coordinate the training of medical officers to be involved in the vaccination exercise. The functions of the taskforce are as highlighted below;

- To take charge of collection from the regional store and distribution of vaccines to sub-counties, which would then distribute to various health facilities.
- To organize advocacy activities within the County with the help of Sub County Health Management Team.
- To organize and carry out mobilization activities within the vaccination of Covi-19 vaccines.
- To facilitate vaccinating facilities and their staff to carry out vaccination outreaches to enhance mass vaccinations.

The work plan for the taskforce was not provided to indicate how the County intended to carry out the mobilization, advocacy and outreach activities. In addition, no training program on how the County intended to carry out the training was provided.

The coordination at the County Level was done by the Baringo Covid-19 Vaccine Deployment and Vaccination Taskforce. However, appointment letters and the terms of reference of the task force has not been provided for audit review. In the circumstances, the Special Audit could not establish the membership of the task force, and their roles and mandate.

According to the National Covid-19 Vaccine Deployment Plan 2021, the County Emergency Covid-19 Response Committee were to be adopted to form the Steering Committee. Review of documents provided for audit at the Counties, Sub- Counties and Facilities revealed anomalies as summarized in **Table 10** and detailed in **Appendices 11,12 and 13**.

Table 10- Coordination at County Level

Observation/Findings	County	Sub-Counties		Facilities	
	Non-Compliant	Number of Compliant	Number of Non-Compliant	Number of Compliant	Number of Non-Compliant
Failure to form coordination taskforce/committee	0	1	6	N/a	N/a
Task force /committee without terms of reference (TOR)	0	1	6	N/a	N/a
Failure to comply with the TORS	0	0	7	N/a	N/a
Lack of upward/downward communication in Covid – 19 Vaccine Roll out	0	7	0	1	121
Lack of committee meetings	0	1	6	N/a	N/a
Failure to carry out advocacy	0	7	0	103	19
Failure to carry out mobilization	0	7	0	115	7
Failure to carry out mobilization outreaches	0	7	0	101	21

From the foregoing, the coordination of various players in Covid–19 Vaccine roll out may not have been complied with in Baringo County.

3.8 Monitoring and Supervision

Monitoring and Supervision at the County and Facilities Level

The Covid-19 Vaccination should be monitored and supervised to ensure smooth implementation of policy and guidelines issued from time to time by the National Government.

As per the County’s Health Management Team minutes of 18th February, 2020, a County Monitoring and Supervision Team was to be formed from the attending members who

were not part of the Coordination Team. However, no minutes were provided to help ascertain the existence of such a committee.

The County received 60 tablets for data entry but it had 128 vaccinating facilities. This meant that some facilities had no means of entering data and resulted to vaccinators using their own phones. In addition to most facilities not receiving the tablets, majority of them (88 facilities) did not receive airtime to purchase bundles for data entry. Data clerks ended up using their resources to access Chanjo System for data entry. Besides, most facilities had no log in credentials for the Chanjo System during the beginning of the vaccination exercise and facilities ended up sharing credentials. This resulted on mix-up of data in the system from the vaccinating facilities.

Review of documents provided for audit at the Sub-Counties and facilities level of Covid-19 management revealed anomalies as summarized in Table 11 and detailed in Appendices 14, 15 and 16.

Table 11- Monitoring and Supervision at County and Facility Level

Observation/Findings	County		Sub-County		Facilities	
	Number of Compliant	Number of Non-Compliant	Number of Compliant	Number of Non-Compliant	Number of Compliant	Number of Non-Compliant
Lack of a designated officer as an in charge for monitoring Covid-19 vaccine roll out.	1	0	7	0	N/a	NA
Lack tablets from the Ministry	1	0	7	0	60	62
Tablet not in good working conditions	0	1	7	0	54	68
Personnel involved in the roll out not facilitated by airtime	0	1	0	7	31	91
Lack of mechanism /measures where patients could report	1	0	0	7	86	36

Observation/Findings	County		Sub-County		Facilities	
	Number of Compliant	Number of Non-Compliant	Number of Compliant	Number of Non-Compliant	Number of Compliant	Number of Non-Compliant
adverse effect after vaccination.						
Lack of Adverse effect booklet etc. that are required to report adverse effects	1	0	7	0	57	65
Failure to monitor temperature during transportation of vaccines	1	0	7	0	103	19
Failure to record temperature every morning and evening in the temperature monitoring chart/tool	1	0	7	0	120	2
Failure to monitor for the expiry of the vaccines?	1	0	7	0	121	1
Failure to monitored the Pfizer and Moderna vaccines for the 30 days expiry period after thawing	1	0	7	0	116	6

In view of the above, the facilities failed to monitor temperature during transportation of vaccines and as a result it was not be possible to ascertain deviations beyond the acceptable standards set by WHO. Further, of the 122 facilities, 60 facilities had received tablets from the MOH for use in the recording on vaccine receipts and administration. Of the 60 facilities that had received the tablets, only 54 facilities reported their tablets as functional and being put into use. 91 facilities reported not having received the monthly airtime. Similarly, the 7 Sub County Stores had each received tablets from MOH and were

in good working condition. The Sub Counties' personnel indicated not having received the monthly airtime.

Consequently, there was inconsistency in the release of the monthly airtime to the tablets in the facilities and the Sub-Counties.

4.0 IRREGULARITIES AND WEAKNESSES IN MANAGEMENT AND INSTITUTIONS CONTROLS OF VACCINES AND RECOMMENDATIONS

Irregularities and Weaknesses at the County and Sub County Level

The following irregularities and weaknesses and the corresponding recommendations were observed by the Special Audit at the Baringo County and Sub County levels;

Table 12 : Irregularities and Weaknesses at the County and Sub County Level


	Irregularities and Weaknesses	Recommendations
1.	A number of facilities had faulty refrigerators while other were sharing fridges. In addition, proper arrangement of the vaccines in the refrigerator was not observed in some facilities. Cases were also noted where the fridge thermometers were not functional and some facilities had stored expired vaccines in the refrigerator.	The County Government should consider having a replacement plan for aged and faulty fridges and Thermometers
2.	Some facilities were recording the serial numbers instead of the Batch numbers while others were recording the manufacturer's expiry date especially for Pfizer and Moderna instead of recording the expiry date since the time of thawing of the vaccines.	The County government should enhance monitoring to the facilities and provide requires training and support.
3.	A number of facilities especially in the Baringo Central and the Tiaty-East Sub Counties were sharing credentials in the Chanjo System making accountability of the vaccine difficult.	The County Government should ensure that all vaccinating facilities are defined in the Chanjo System and train the respective health workers on the how to use the system.
4.	Some sub-counties and most facilities did not properly maintain the Covid-19 vaccine ledgers while others did not have it at all.	The County government should enhance monitoring to the facilities and provide requires training. In addition, ensure that all facilities have a covid-19 Vaccine Ledger Book.

	Irregularities and Weaknesses	Recommendations
5.	Most facilities had to incur transportation cost while obtaining the vaccines from the Sub County stores and at times the officers had to close the facility into order collect vaccines from the Sub County stores.	The County Government should consider devising a mechanism to ensure that vaccines are delivered to the facilities to allow that the health workers focus on their primary roles.
6.	The facilities did not have clear information on how to handle disposal of Covid-19 vaccine vials, wasted and expired vaccines.	The County government should enhance monitoring to the facilities and provide required training especially on disposal.

5.0 CONCLUSION

The Special Audit objective was to determine the efficiency and effectiveness of the Covid-19 vaccine roll out in Baringo County. Following the findings, the County should ensure that all vaccinating facilities are defined in the Chanjo System and effective supervision of the activities at the County, Sub County and facilities on all matters relating to vaccines receipts, issues and utilization. The above weaknesses resulted in an unexplained deficit variance of 23,035 vaccine doses valued at Kshs.16,003,425 based on the average vaccine cost during the period.

The County should also adhere to the cold chain and supply logistics guidelines as issued by WHO and MOH in order to meet the increasing service demands, there is need to continuously assess demand for health workers and build their capacity for effective service delivery to the citizens of Baringo County.


CPA Nancy Gathungu, CBS
AUDITOR-GENERAL

Nairobi

30 June, 2022

6.0 APPENDICES

Appendix 1: Sub-Counties and Facilities in Baringo County

Sub County	Sub County Store	Facilities Under Sub County	Facility Defined in Chanjo
Baringo Central	Baringo County KEPI Store	Baringo County Referral Hospital	Yes
		Talai Dispensary	Yes
		Kerio Hospital	Yes
		Tenges Health Centre	No
		Kituro H Centre	No
		Mogorwa H Centre	No
		Kiptagich Health Centre	No
		Timboiywo Dispensary	No
		Kapkelelwa Dispensary	No
		Salawa Mission	No
		Salawa Health Centre	No
		Kaptimbor Dispensary	No
		Seretunin Health Centre	No
		Kasooyo Dispensary	No
		Kapkut Dispensary	No
		Borrowonin Dispensary	No
		Kiboino Dispensary	No
		Riwo Dispensary	No
		Ochii Dispensary	No
		Ngetmoi Dispensary	No
		Kapkomoi Dispensary	No
		Cheplambus Dispensary	No
		Kaptorokwo Dispensary	No
Orokwo Dispensary	No		
Kapkole Dispensary	No		
Kipsacho Dispensary	No		
Chesongo Dispensary	No		
Kipsoit Dispensary	No		
Sorok Dispensary	No		
Sacho High Dispensary	No		
Baringo North	Baringo North Sub County	Kipcherere Dispensary	Yes
		Barwessa Health Centre	Yes
		Kabartonjo Sub County Hospital	Yes
		Tunoiwo Dispensary	Yes

Sub County	Sub County Store	Facilities Under Sub County	Facility Defined in Chanjo
	KEPI Store	Chemura Dispensary	Yes
		Kuikui Health Centre	Yes
		Bartabwa Health Care	No
		Sibilo Dispensary	No
		Kipsaraman Dispensary	No
		Kapluk Dispensary	No
East Pokot	East Pokot Sub County KEPI Store	Chemolingot District Hospital	Yes
		Barpello Disp	Yes
		Ngoron Dispensary	Yes
		Lodengo Health Centre	Yes
		Loiwat Dispensary	Yes
		Kositei Dispensary	Yes
		Kipnai Dispensary	Yes
		Chepturu Dispensary	Yes
		Kabunyany Dispensary	Yes
		Koloa Health Centre	Yes
Koibatek	Koibatek Sub County KEPI Store	Eldama Ravine District Hospital	Yes
		Equator Health Centre	Yes
		Saos Dispensary	Yes
		Timboroa Health Centre	Yes
		Esageri Health Centre	Yes
		Solian Dispensary	Yes
		Sirwa Dispensary	Yes
		Maji Mazuri Dispensary	Yes
		Sigoro Dispensary	Yes
		Kabiyet Disp	Yes
		Eldama Ravine (Aic) Health Centre	Yes
		Sabatia Dispensary	Yes
		Torongu Health Centre	Yes
		Muserechi Dispensary	Yes
		Mercy Hospital	Yes
		Arama Dispensary	Yes
		Kabimoi Dispensary	Yes
		Kiplombe Dispensary	Yes
		Sagat Dispensary	Yes
		Simotwet Dispensary	Yes
Tugumoi Dispensary	Yes		
Igure Dispensary	No		

Sub County	Sub County Store	Facilities Under Sub County	Facility Defined in Chanjo
		Kapcholoi Dispensary	No
		Nakurtakwei Dispensary	No
Marigat	Marigat Sub County KEPI Store	Marigat Sub District Hospital	Yes
		Tuiyobei Dispensary	Yes
		Mochongoi Health Centre	Yes
		Kimalel Health Centre	Yes
		Loboi Health Centre	Yes
		Kasiela Dispensary	Yes
		Tinomoi Dispensary	Yes
		Olarabel Dispensary	Yes
		Illingarua Dispensary	Yes
		Sandai Dispensary	Yes
		Sabor Dispensary	Yes
		Sitata Dispensary	Yes
		Meisori Dispensary	Yes
		Marigat Catholic Mission	Yes
		Bekibon Dispensary	Yes
		Kapkuikui Dispensary	Yes
		Eldume Dispensary	Yes
		Kokwo Island Dispensary	Yes
Kampi Samaki Health Centre	Yes		
Mogotio	Mogotio Sub County KEPI Store	Mogotio Sub County Hospital	Yes
		Cheberen Dispensary	Yes
		Oldebes Dispensary	Yes
		Kibotany Dispensary	Yes
		Chemoinoi Dispensary	Yes
		Kisanana Health Centre	Yes
		Sirwa Health Centre	Yes
		Emining Health Centre	Yes
		Mugurin Health Centre	Yes
		Olkokwe Dispensary	Yes
		Ngubereti Health Centre	Yes
		Radat Dispensary	Yes
		Molo Sirwe	Yes
		Koitebes	Yes
		Kipkitur Dispensary	Yes
		Waseges Dispensary	Yes
Maji Moto Dispensary	Yes		

Sub County	Sub County Store	Facilities Under Sub County	Facility Defined in Chanjo
		Kamar Dispensary	Yes
		Kimose Dispensary	Yes
		Sore Dispensary	Yes
		Kipsogon Dispensary	Yes
		Kiptoim Dispensary	Yes
		Molos Dispensary	Yes
		Ngendalel Dispensary	Yes
		Rosoga Dispensary	Yes
		Sagasakik Dispensary	Yes
		Kipngorom Dispensary	Yes
		Mogotio Catholic Dispensary	Yes
		Kapkein Dispensary	Yes
		Emsos Dispensary	Yes
		Molok Dispensary	Yes
		Kabogor Dispensary	Yes
		Oterit Dispensary	No
TIATY EAST	TIATY EAST Sub County KEPI Store	Tangulbei Sub County Hospital	Yes
		Tangulbei Catholic Mission	No

Appendix 2: Budget at County and Sub County Level – Baringo County

County /Sub County	B1	B2	B3	B4	B5	B6	B7
Baringo Central	No	Yes	Yes	No	No	No	No
Baringo North	No	Yes	Yes	No	No	No	No
East Pokot	No	Yes	Yes	No	No	No	No
Koibatek	No	Yes	Yes	No	No	No	No
Marigat	No	Yes	Yes	No	No	No	No
Mogotio	No	Yes	Yes	No	No	No	No
Tiaty East	No	Yes	Yes	No	No	No	No
Compliant	0	7	7	7	0	0	0
Non-Compliant	7	0	0	0	7	7	7

Key/Details:

B1	Was the associated Covid-19 vaccination costs, including transportation, training and procurement of auxiliary services such as syringes and safety boxes, budgeted for?
B2	Did the County receive any Covid-19 related budgetary support from donors/National government?
B3	Did the County spend on Covid-19 vaccination?
	Did the Sub County/Facility finance the following costs related to Covid-19 vaccination;
B4	i) Distribution of Vaccines/
B5	ii) Outreaches
B6	iii) Trainings
B7	iv) Acquisition of auxiliary facilities (Temperature monitoring tools, Adverse effect reporting booklet, Needles etc.) ?

Appendix 3: Storage at Sub County Level - Baringo County

Sub County	S1	S2	S3	S4	S5	S6	S7	S8	S9	S10	S11	S12	S13	S14	S15	S16	S17	S18	S19
Baringo Central	No	No	Yes	Yes	Yes	Yes	Yes	Yes	No	No	No	No	No	Yes	Yes	Yes	Yes	Yes	Yes
Baringo North	Yes	No	Yes	Yes	Yes	Yes	Yes	Yes	Yes	No	No	No	No	Yes	Yes	Yes	Yes	Yes	Yes
East Pokot	Yes	Yes	No	Yes	Yes	Yes	Yes	Yes	No	No	No	No	No	Yes	Yes	Yes	Yes	Yes	Yes
Koibatek	Yes	Yes	Yes	Yes	Yes	Yes	Yes	Yes	Yes	No	No	No	No	Yes	Yes	Yes	Yes	Yes	Yes
Marigat Sub	No	No	Yes	Yes	Yes	Yes	Yes	Yes	Yes	No	No	No	No	Yes	Yes	Yes	Yes	Yes	Yes
Mogotio	Yes	No	Yes	Yes	Yes	Yes	Yes	Yes	Yes	No	No	No	No	Yes	Yes	Yes	Yes	Yes	Yes
Tiaty East	Yes	Yes	No	Yes	Yes	Yes	Yes	Yes	No	No	No	No	No	Yes	Yes	Yes	Yes	Yes	Yes
Compliant	5	3	5	7	7	7	7	7	4	0	0	0	0	7	7	7	7	7	7
Non-Compliant	2	4	2	0	0	0	0	0	3	7	7	7	7	0	0	0	0	0	0

Key/Details:

S1	Does the building have sufficient security to prevent loss of Covid vaccines as well as prevent unauthorized access?
S2	Is there sufficient space for orderly receipt, warehousing, and dispatch of vaccines? In particular, a quarantine area for isolation when necessary, including isolation of faulty packs and recalled goods? (The vaccines and areas concerned should be appropriately identified.)
S3	Are the Broken or damaged items withdrawn from usable stock and stored separately?
S4	Is there sufficient lighting necessary to enable all operations to be carried out accurately and safely?
S5	Are all Covid-19 vaccines stored off the floor?
S6	Are Refrigerated and freezing storage environments fitted with signals to indicate that refrigeration has failed?(The signal should permit resetting only by the authorized person.)
S7	Are the vaccines issued on a FIFO method and guided by the expiry date?
S8	Is there a contingency plan put in place in case of power failure, equipment breakdown, or cold chain breach?
S9	Are there Secure measures to ensure that rejected vaccines cannot be used? Are they stored separately from other products while awaiting destruction or return to the supplier?

S10	Are there Written procedures and a sanitation program indicating the frequency of cleaning and the methods used to clean the premises and storage areas?
S11	Is there a cleaning log that must be completed, signed, and checked by the appropriately designated person?
S12	Is there a written procedure and a program for pest control? Do the pest control agents used pose any risk of contaminating the vaccines? (A site flow plan indicating where the bait stations are situated must be available.)
S13	Are there appropriate written procedures for the clean-up of any spillage to ensure the complete removal of any risk of contamination?
S14	Are the Covid-19 vaccines stored in such a way as to prevent contamination or cross-contamination?
S15	Are the storage conditions compatible with the storage conditions specified on their labels? (Storage facilities should protect goods from deterioration.)
S16	Are the warehouse maintained at a temperature not exceeding 30 °C, and relative humidity not exceeding 75% Relative humidity (WHO zone IVb requirements) at all times?
S17	Are the storage conditions of the refrigerators per the vaccine manufacturer's recommendations? (Refrigerated (2°C to 8°C))
S18	Are there continuous temperature monitoring devices? If Yes, are there Written procedures describing the action in case of temperature deviating outside of the set standards and conditions?
S19	Dose the County have any stock in the Cold Room? If Yes perform Physical count of dozes in the cold room (Grouped per vaccine and Batch X.) and populate the remarks and hyperlink in the remarks column a paper tabulating the results of the count.

Appendix 4 - Storage at Facility Level- Baringo County

Sub County	Facility	ST1	ST2	ST3	ST4	ST5	ST6	ST7	ST8	ST9	ST10	ST11	ST12
Baringo Central	Baringo Central Referral Hospital	Yes	Yes	Yes	Yes	Yes	Yes	Yes	Yes	No	No	Yes	Yes
	Borwonin Dispensary	Yes	Yes	Yes	Yes	Yes	Yes	No	Yes	No	No	Yes	Yes
	Cheplambus dispensary	Yes	Yes	Yes	Yes	No	Yes	No	Yes	No	No	Yes	No
	Chesongo Dispensary	Yes	Yes	Yes	Yes	Yes	Yes	Yes	Yes	No	No	Yes	No
	Kapkelelwa Dispensary	No	Yes	No	No	No	Yes	No	Yes	No	No	Yes	Yes
	Kapkole Dispensary	No	Yes	Yes	No	No	Yes	No	Yes	No	No	Yes	Yes
	Kapkomoi Dispensary	Yes	Yes	Yes	Yes	Yes	Yes	No	Yes	No	No	Yes	Yes
	Kapkut Dispensary	Yes	Yes	Yes	Yes	Yes	Yes	No	No	No	No	Yes	Yes
	Kaptimbor Dispensary	Yes	Yes	Yes	Yes	Yes	Yes	Yes	Yes	No	No	Yes	Yes
	Kasooyo Dispensary	Yes	Yes	Yes	Yes	Yes	Yes	Yes	No	No	No	Yes	Yes
	Kerio Hospital	Yes	Yes	Yes	Yes	Yes	Yes	Yes	Yes	No	No	Yes	Yes
	Kiboino Dispensary	Yes	Yes	Yes	Yes	Yes	Yes	Yes	No	Yes	No	Yes	No
	Kipsacho Dispensary	Yes	Yes	Yes	Yes	Yes	Yes	Yes	No	Yes	No	Yes	Yes
	Kipsoit Dispensary	Yes	Yes	Yes	Yes	Yes	Yes	Yes	No	Yes	No	Yes	No
	Kiptagich Dispensary	Yes	Yes	Yes	Yes	No	Yes	Yes	No	Yes	No	Yes	No
	Kituro Health Centre	Yes	Yes	Yes	Yes	Yes	Yes	Yes	No	No	No	Yes	Yes
	Mogorwa Health Centre	Yes	Yes	Yes	Yes	Yes	Yes	Yes	No	Yes	No	Yes	Yes
	Ng'etmoi Dispensary	Yes	Yes	Yes	No	No	Yes	Yes	No	Yes	No	Yes	Yes
	Ochii Dispensary	Yes	Yes	Yes	Yes	Yes	No	Yes	No	Yes	No	Yes	No
	Orokwo Dispensary	Yes	Yes	Yes	Yes	Yes	Yes	Yes	No	Yes	No	Yes	Yes
Riwo Dispensary	Yes	Yes	Yes	Yes	Yes	Yes	Yes	No	No	No	Yes	Yes	
Sacho High Dispensary	Yes	Yes	Yes	Yes	Yes	Yes	Yes	No	Yes	No	Yes	Yes	
Salawa Health Centre	Yes	Yes	Yes	Yes	Yes	Yes	Yes	No	Yes	No	Yes	No	
Salawa Private Health Care	Yes	Yes	No	No	Yes	Yes	Yes	Yes	Yes	No	Yes	Yes	
Seretunin Dispensary	Yes	Yes	Yes	Yes	Yes	Yes	Yes	No	Yes	No	Yes	Yes	
Sorok Dispensary	Yes	Yes	Yes	Yes	Yes	Yes	Yes	Yes	Yes	No	Yes	Yes	
Talai Health Centre	Yes	Yes	Yes	Yes	Yes	No	Yes	Yes	Yes	No	Yes	Yes	

Sub County	Facility	ST1	ST2	ST3	ST4	ST5	ST6	ST7	ST8	ST9	ST10	ST11	ST12	
	Tenges Health Centre	Yes	Yes	Yes	Yes	Yes	Yes	No	Yes	No	No	Yes	Yes	
	Timboiywo Dispensary	Yes	Yes	Yes	Yes	Yes	Yes	No	Yes	No	No	Yes	Yes	
Baringo North	Baringo North Referral Hospital	Yes	Yes	Yes	Yes	Yes	Yes	Yes	No	No	No	Yes	Yes	
	Bartabwa Dispensary	Yes	Yes	Yes	Yes	Yes	No	Yes	Yes	Yes	No	Yes	Yes	
	Barwessa Health Centre	Yes	Yes	Yes	Yes	Yes	No	Yes	Yes	Yes	No	Yes	Yes	
	Chemura	Yes	Yes	Yes	Yes	Yes	Yes	Yes	No	Yes	No	Yes	Yes	
	Kapluk Dispensary	Yes	Yes	Yes	Yes	Yes	No	Yes	Yes	Yes	No	Yes	Yes	
	Kipcherere	Yes	Yes	Yes	Yes	Yes	No	Yes	No	Yes	No	Yes	Yes	
	Kipsaraman dispensary	Yes	Yes	Yes	Yes	Yes	No	Yes	No	Yes	No	Yes	Yes	
	Kuikui Health Centre	Yes	Yes	Yes	Yes	Yes	No	Yes	Yes	Yes	No	Yes	Yes	
	Sibilo	Yes	Yes	Yes	Yes	Yes	No	Yes	Yes	Yes	No	Yes	Yes	
	Tunoivo Dispensary	Yes	Yes	Yes	Yes	Yes	No	Yes	Yes	Yes	No	Yes	Yes	
	Barpello Dispensary	Yes	Yes	Yes	Yes	Yes	Yes	Yes	Yes	Yes	No	Yes	Yes	
	East Pokot	Chemolingot Sub County Hospital	Yes	Yes	Yes	Yes	Yes	Yes	Yes	Yes	Yes	No	Yes	Yes
Chepturu Dispensary		Yes	Yes	Yes	Yes	Yes	Yes	Yes	No	No	No	Yes	Yes	
Kapunyany Dispensary		Yes	Yes	Yes	Yes	Yes	Yes	Yes	No	No	No	Yes	Yes	
Kipnai Dispensary		Yes	Yes	Yes	Yes	Yes	Yes	Yes	No	No	No	Yes	Yes	
Kolowa Health Centre		Yes	Yes	Yes	Yes	Yes	Yes	Yes	No	No	No	Yes	Yes	
Kositei Dispensary		Yes	Yes	Yes	Yes	Yes	Yes	Yes	No	No	No	Yes	Yes	
Lodengo Health Centre		Yes	Yes	Yes	Yes	Yes	Yes	Yes	Yes	Yes	No	Yes	Yes	
Ngoron Dispensary		Yes	Yes	Yes	Yes	Yes	Yes	Yes	No	No	No	Yes	Yes	
Koibatek		Arama Dispensary	Yes	Yes	Yes	Yes	Yes	No	Yes	Yes	Yes	No	Yes	Yes
		Eldama Ravine AIC	Yes	Yes	Yes	Yes	Yes	No	Yes	Yes	Yes	No	Yes	Yes
		Eldama Ravine Referral Hospital	Yes	Yes	Yes	Yes	Yes	Yes	Yes	Yes	Yes	No	Yes	Yes
		Equator Health Centre	Yes	Yes	Yes	Yes	Yes	No	Yes	Yes	Yes	No	Yes	Yes
	Esageri Health Centre	Yes	Yes	Yes	Yes	Yes	No	Yes	Yes	Yes	No	Yes	Yes	
	Igure Dispensary	Yes	Yes	Yes	Yes	Yes	Yes	Yes	Yes	Yes	No	Yes	Yes	
	Kabimoi Dispensary	Yes	Yes	Yes	Yes	Yes	No	Yes	Yes	Yes	No	Yes	Yes	
	Kabiyet Dispensary	Yes	Yes	Yes	Yes	Yes	No	Yes	Yes	Yes	No	Yes	Yes	
	Kapcholoi Dispensary	No	Yes	Yes	Yes	Yes	Yes	Yes	Yes	Yes	No	No	Yes	

Sub County	Facility	ST1	ST2	ST3	ST4	ST5	ST6	ST7	ST8	ST9	ST10	ST11	ST12
Mogotio	Kiplombe Dispensary	Yes	Yes	Yes	Yes	No	Yes	Yes	Yes	Yes	No	No	Yes
	Maji Mazuri Dispensary	Yes	Yes	Yes	Yes	No	Yes	Yes	Yes	Yes	No	No	Yes
	Mercy Mission Hospital	Yes	Yes	Yes	Yes	No	Yes	Yes	Yes	Yes	No	No	Yes
	Muserochi Dispensary	Yes	Yes	Yes	Yes	No	Yes	Yes	Yes	Yes	No	No	Yes
	Nakurtakwei Dispensary	Yes	Yes	Yes	Yes	No	Yes	Yes	Yes	Yes	No	No	Yes
	Sabatia Dispensary	Yes	Yes	Yes	Yes	Yes	Yes	Yes	Yes	Yes	No	No	Yes
	Sagat Dispensary	Yes	Yes	Yes	Yes	No	Yes	Yes	Yes	Yes	No	No	Yes
	Saos Dispensary	Yes	Yes	Yes	Yes	Yes	No	Yes	Yes	Yes	No	No	Yes
	Sigoro Dispensary	Yes	Yes	Yes	Yes	Yes	Yes	Yes	Yes	Yes	No	No	Yes
	Simotwet Dispensary	Yes	Yes	Yes	Yes	Yes	Yes	Yes	Yes	Yes	No	No	Yes
	Solian Health Centre	Yes	Yes	Yes	Yes	Yes	Yes	Yes	Yes	Yes	No	No	Yes
	Timboroa Health Centre	Yes	Yes	Yes	Yes	Yes	Yes	Yes	Yes	Yes	No	No	Yes
	Torong Health Centre	Yes	Yes	Yes	Yes	Yes	No	Yes	Yes	Yes	No	No	Yes
	Tugumo Dispensary	Yes	Yes	Yes	Yes	Yes	Yes	Yes	Yes	Yes	No	No	Yes
	Bekibon	Yes	Yes	Yes	Yes	Yes	Yes	Yes	Yes	Yes	No	No	Yes
	Eldume Dispensary	Yes	Yes	Yes	Yes	Yes	Yes	Yes	Yes	Yes	No	No	Yes
	Kampi ya Samaki	Yes	Yes	Yes	Yes	Yes	Yes	Yes	Yes	Yes	No	No	Yes
	Kimal Health Centre	Yes	Yes	Yes	Yes	Yes	Yes	Yes	Yes	Yes	No	No	Yes
	Kokwa Dispensary	Yes	Yes	Yes	Yes	Yes	Yes	Yes	Yes	Yes	No	No	Yes
	Lobo Dispensary	Yes	Yes	Yes	Yes	Yes	Yes	Yes	Yes	Yes	No	No	Yes
Marigat Catholic Mission	Yes	Yes	No	No	Yes	Yes	Yes	Yes	Yes	No	No	Yes	
Marigat Sub County Hospital	Yes	Yes	Yes	Yes	Yes	Yes	Yes	Yes	Yes	No	No	Yes	
Mochongoi Health Centre	Yes	Yes	Yes	Yes	Yes	Yes	Yes	Yes	Yes	No	No	Yes	
Olarabel Dispensary	Yes	Yes	Yes	Yes	Yes	Yes	Yes	Yes	Yes	No	No	Yes	
Sabor Dispensary	Yes	Yes	Yes	Yes	Yes	Yes	Yes	Yes	Yes	No	No	Yes	
Sandai Dispensary	Yes	Yes	Yes	Yes	Yes	Yes	Yes	Yes	Yes	No	No	Yes	
Tinomo Dispensary	Yes	Yes	Yes	Yes	Yes	Yes	Yes	Yes	Yes	No	No	Yes	
Tuiyobe Dispensary	Yes	Yes	Yes	Yes	Yes	Yes	Yes	Yes	Yes	No	No	Yes	
Cheberen Health Centre	Yes	Yes	Yes	Yes	Yes	No	Yes	Yes	Yes	No	No	Yes	
Chemoinoi Dispensary	No	Yes	Yes	Yes	Yes	Yes	Yes	Yes	Yes	No	No	Yes	

Sub County	Facility	ST1	ST2	ST3	ST4	ST5	ST6	ST7	ST8	ST9	ST10	ST11	ST12
	Emming Health Centre	Yes	Yes	Yes	Yes	Yes	Yes	Yes	Yes	Yes	No	Yes	Yes
	Emsos Dispensary	No	Yes	Yes	No	No	Yes	No	Yes	Yes	No	No	No
	Kabogor Dispensary	Yes	Yes	Yes	Yes	No	Yes	Yes	Yes	Yes	No	No	Yes
	Kamar Dispensary	Yes	Yes	Yes	Yes	No	Yes	Yes	Yes	Yes	No	No	Yes
	Kapkein Dispensary	Yes	Yes	Yes	Yes	Yes	Yes	Yes	Yes	Yes	No	No	Yes
	Kibotany Dispensary	No	Yes	Yes	Yes	Yes	Yes	Yes	Yes	Yes	No	No	Yes
	Kimng'orom Dispensary	Yes	Yes	Yes	Yes	Yes	Yes	Yes	Yes	Yes	No	No	Yes
	Kimose Dispensary	Yes	Yes	Yes	Yes	Yes	Yes	Yes	Yes	Yes	No	No	Yes
	Kipkitur Dispensary	No	Yes	Yes	Yes	No	Yes	Yes	Yes	Yes	No	No	Yes
	Kipsogon Dispensary	Yes	Yes	Yes	Yes	Yes	Yes	Yes	Yes	Yes	No	No	Yes
	Kiptoim Dispensary	Yes	Yes	Yes	Yes	Yes	Yes	Yes	Yes	Yes	No	No	Yes
	Kiptuno Dispensary	Yes	Yes	Yes	Yes	Yes	Yes	Yes	Yes	Yes	No	No	Yes
	Kisana Health Centre	Yes	Yes	Yes	Yes	No	Yes	Yes	Yes	Yes	No	No	Yes
	Koitibes Dispensary	Yes	Yes	Yes	Yes	No	Yes	Yes	Yes	Yes	No	No	Yes
	Maji Moto Dispensary	Yes	Yes	Yes	Yes	No	Yes	Yes	Yes	Yes	No	No	Yes
	Mogotio Catholic Mission Hospital	Yes	Yes	Yes	Yes	No	Yes	Yes	Yes	Yes	No	No	Yes
	Mogotio Sub County Hospital Baringo	Yes	Yes	Yes	Yes	Yes	Yes	Yes	Yes	Yes	No	No	Yes
	Molok Dispensary	Yes	Yes	Yes	Yes	No	Yes	Yes	Yes	Yes	No	No	Yes
	Molos Dispensary	Yes	Yes	Yes	Yes	No	Yes	Yes	Yes	Yes	No	No	Yes
	Molosirwe Dispensary	No	Yes	Yes	Yes	No	Yes	Yes	Yes	Yes	No	No	Yes
	Mugurin Dispensary	No	Yes	Yes	Yes	No	Yes	Yes	Yes	Yes	No	No	Yes
	Mugundai Dispensary	Yes	No	Yes	Yes	No	Yes	Yes	Yes	Yes	No	No	Yes
	Ngunbereti Health Centre	Yes	Yes	Yes	Yes	No	Yes	Yes	Yes	Yes	No	No	Yes
	Oldebes Dispensary	No	Yes	Yes	No	No	Yes	No	Yes	Yes	No	No	No
	Olkokwe Health Centre	Yes	Yes	Yes	Yes	No	Yes	Yes	Yes	Yes	No	No	Yes
	Oterit Dispensary	Yes	Yes	Yes	Yes	No	Yes	Yes	Yes	Yes	No	No	Yes
	Radat Dispensary	Yes	Yes	Yes	Yes	Yes	Yes	Yes	Yes	Yes	No	No	Yes
	Rosoga Dispensary	Yes	Yes	Yes	Yes	No	Yes	Yes	Yes	Yes	No	No	Yes
	Sagasagik Dispensary	Yes	Yes	Yes	Yes	No	Yes	Yes	Yes	Yes	No	No	Yes
	Sirwa Dispensary	Yes	Yes	Yes	Yes	Yes	Yes	Yes	Yes	Yes	No	No	Yes

Sub County	Facility	ST1	ST2	ST3	ST4	ST5	ST6	ST7	ST8	ST9	ST10	ST11	ST12
	Sore Dispensary	Yes	Yes	Yes	Yes	No	Yes	Yes	Yes	No	No	Yes	Yes
	Tinet Dispensary	Yes	Yes	Yes	Yes	No	Yes	Yes	Yes	No	No	Yes	Yes
	Waseges Dispensary	Yes	Yes	Yes	Yes	No	Yes	Yes	Yes	No	No	Yes	Yes
Tiaty East	Tangulbei Mission Hospital	Yes	Yes	Yes	Yes	Yes	Yes	Yes	Yes	No	No	Yes	Yes
	Tangulbei Sub CountyHospital	Yes	Yes	Yes	Yes	Yes	Yes	Yes	Yes	No	No	Yes	Yes
Compliant		112	121	119	114	64	122	81	107	0	0	119	111
Non-Compliant		10	1	3	7	56	0	41	15	122	122	3	11

Key/Details:

SF1	Is the refrigerator well secured to prevent unauthorized access?
SF2	Were broken or damaged items withdrawn from usable stock and stored separately?
SF3	Is there sufficient lighting necessary to enable all operations to be carried out accurately and safely?
SF4	Are all Covid-19 vaccines (Fridge) stored off the floor?
SF5	Is the Refrigerator is fitted with signals to indicate that refrigeration has failed? (The signal should permit resetting only by the authorized person.)
SF6	Are the vaccines issued on a FIFO method and guided by the expiry date?
SF7	Is there a contingency plan in case of power failure, equipment breakdown, or cold chain breach
SF8	Are there measures to ensure that rejected vaccines cannot be used? (They should be stored separately from other products while awaiting destruction or return to the supplier)
SF9	Are there Written procedures and a sanitation program indicating the frequency of cleaning and the methods used to clean the premises and storage areas (There should be a chart on the wall that is signed after every cleaning and a poster giving cleaning instructions)
SF10	Are there appropriate written procedures for the clean-up of any spillage to ensure the complete removal of any risk of contamination?
SF11	Are the storage conditions of the refrigerators per the vaccine manufacturer's recommendations?
SF12	Is there Continuous temperature monitoring devices? If yes, are there Written procedures describing the action in case of temperature deviating outside of the set standards and conditions?

Appendix 5- Receipts at Baringo County as at 31 March, 2022

Vaccine Type	Batch	Sub County / Facility	Doses Received	Doses Dispatched
Moderna	019F21A - Moderna	[subcounty] Baringo Central Sub County	6,580	
Moderna	019F21A - Moderna	[facility] Baringo County Referral Hospital		1,260
Moderna	019F21A - Moderna	[subCounty] Baringo North Sub County		560
Moderna	019F21A - Moderna	[subCounty] East Pokot Sub County		266
Moderna	019F21A - Moderna	[subCounty] Koibatek Sub County		1,988
Moderna	019F21A - Moderna	[subCounty] Marigat Sub County		630
Moderna	019F21A - Moderna	[subCounty] Mogotio Sub County		1,204
Moderna	019F21A - Moderna	[subCounty] Tiaty East Sub County		280
Moderna Total			6,580	6,188
Oxford / AstraZeneca	210102 - Oxford/AstraZeneca	[subCounty] Baringo Central Sub County	2,000	
Oxford / AstraZeneca	210102 - Oxford/AstraZeneca	[facility] Baringo County Referral Hospital		1,100
Oxford / AstraZeneca	210102 - Oxford/AstraZeneca	[subCounty] Koibatek Sub County		400
Oxford / AstraZeneca	210102 - Oxford/AstraZeneca	[subCounty] Mogotio Sub County		200
Oxford / AstraZeneca	210152 - Oxford/AstraZeneca	[facility] Baringo County Referral Hospital	610	
Oxford / AstraZeneca	210152 - Oxford/AstraZeneca	[subCounty] Baringo Central Sub County	6,000	
Oxford / AstraZeneca	210152 - Oxford/AstraZeneca	[facility] Baringo County Referral Hospital		940
Oxford / AstraZeneca	210152 - Oxford/AstraZeneca	[subCounty] Baringo North Sub County		600
Oxford / AstraZeneca	210152 - Oxford/AstraZeneca	[subCounty] East Pokot Sub County		160
Oxford / AstraZeneca	210152 - Oxford/AstraZeneca	[subCounty] Koibatek Sub County		2,000
Oxford / AstraZeneca	210152 - Oxford/AstraZeneca	[subCounty] Marigat Sub County		800
Oxford / AstraZeneca	210152 - Oxford/AstraZeneca	[subCounty] Mogotio Sub County		1,800
Oxford / AstraZeneca	210152 - Oxford/AstraZeneca	[subCounty] Tiaty East Sub County		160
Oxford / AstraZeneca	210217 - Oxford/AstraZeneca	[subCounty] Baringo Central Sub County	4,800	
Oxford / AstraZeneca	210217 - Oxford/AstraZeneca	[facility] Baringo County Referral Hospital		1,000
Oxford / AstraZeneca	210217 - Oxford/AstraZeneca	[subCounty] Baringo North Sub County		1,000

Vaccine Type	Batch	Sub County / Facility	Doses Received	Doses Dispatched
Oxford / AstraZeneca	210217 - Oxford/AstraZeneca	[subCounty] Koibatek Sub County		1,000
Oxford / AstraZeneca	210217 - Oxford/AstraZeneca	[subCounty] Marigat Sub County		1,100
Oxford / AstraZeneca	210217 - Oxford/AstraZeneca	[subCounty] Mogotio Sub County		700
Oxford / AstraZeneca	210304 - Oxford/AstraZeneca	[subCounty] Baringo Central Sub County	16,000	
Oxford / AstraZeneca	210304 - Oxford/AstraZeneca	[facility] Baringo County Referral Hospital		4,100
Oxford / AstraZeneca	210304 - Oxford/AstraZeneca	[subCounty] Baringo North Sub County		2,500
Oxford / AstraZeneca	210304 - Oxford/AstraZeneca	[subCounty] East Pokot Sub County		500
Oxford / AstraZeneca	210304 - Oxford/AstraZeneca	[subCounty] Koibatek Sub County		3,500
Oxford / AstraZeneca	210304 - Oxford/AstraZeneca	[subCounty] Marigat Sub County		2,100
Oxford / AstraZeneca	210304 - Oxford/AstraZeneca	[subCounty] Mogotio Sub County		2,800
Oxford / AstraZeneca	210304 - Oxford/AstraZeneca	[subCounty] Tiaty East Sub County		500
Oxford / AstraZeneca Total			29,410	28,960
Janssen	217D21A - Janssen (Ad26.COv2-S)	[subCounty] Baringo Central Sub County	5,000	
Janssen	217D21A - Janssen (Ad26.COv2-S)	[facility] Baringo County Referral Hospital		1,000
Janssen	217D21A - Janssen (Ad26.COv2-S)	[facility] Kerio Hospital		40
Janssen	217D21A - Janssen (Ad26.COv2-S)	[facility] Talai Dispensary		50
Janssen	217D21A - Janssen (Ad26.COv2-S)	[subCounty] Baringo North Sub County		460
Janssen	217D21A - Janssen (Ad26.COv2-S)	[subCounty] Koibatek Sub County		450
Janssen	217D21A - Janssen (Ad26.COv2-S)	[subCounty] Marigat Sub County		1,000
Janssen	217D21A - Janssen (Ad26.COv2-S)	[subCounty] Mogotio Sub County		2,000
Janssen Total			5,000	5,000
Pfizer	32131BD - Pfizer	[subCounty] Baringo Central Sub County	5,256	
Pfizer	32131BD - Pfizer	[facility] Baringo County Referral Hospital		2,340
Pfizer	32131BD - Pfizer	[facility] Talai Dispensary		96
Pfizer	32131BD - Pfizer	[subCounty] Koibatek Sub County		2,580
Pfizer	32131BD - Pfizer	[subCounty] Mogotio Sub County		240

Vaccine Type	Batch	Sub County / Facility	Doses Received	Doses Dispatched
Pfizer Total			5,256	5,256
Oxford / AstraZeneca	77946 - Oxford/AstraZeneca	[subCounty] Baringo Central Sub County	2,000	
Oxford / AstraZeneca	77946 - Oxford/AstraZeneca	[facility] Baringo County Referral Hospital		700
Oxford / AstraZeneca	77946 - Oxford/AstraZeneca	[facility] Talai Dispensary		100
Oxford / AstraZeneca	77946 - Oxford/AstraZeneca	[subCounty] Marigat Sub County		200
Oxford / AstraZeneca	77946 - Oxford/AstraZeneca	[subCounty] Mogotio Sub County		300
Oxford / AstraZeneca Total			2,000	1,300
Moderna	940906 - Moderna	[subCounty] Baringo Central Sub County	10,410	
Moderna	940906 - Moderna	[facility] Baringo County Referral Hospital		2,072
Moderna	940906 - Moderna	[subCounty] Baringo North Sub County		1,540
Moderna	940906 - Moderna	[subCounty] East Pokot Sub County		840
Moderna	940906 - Moderna	[subCounty] Koibatek Sub County		2,640
Moderna	940906 - Moderna	[subCounty] Marigat Sub County		1,540
Moderna	940906 - Moderna	[subCounty] Mogotio Sub County		1,120
Moderna	940906 - Moderna	[subCounty] Tiaty East Sub County		658
Moderna Total			10,410	10,410
Oxford / AstraZeneca	ACB3580 - Oxford/AstraZeneca	[subCounty] Baringo Central Sub County	8,000	
Oxford / AstraZeneca	ACB3580 - Oxford/AstraZeneca	[facility] Baringo County Referral Hospital		1,100
Oxford / AstraZeneca	ACB3580 - Oxford/AstraZeneca	[facility] Talai Dispensary		100
Oxford / AstraZeneca	ACB3580 - Oxford/AstraZeneca	[subCounty] Baringo North Sub County		1,700
Oxford / AstraZeneca	ACB3580 - Oxford/AstraZeneca	[subCounty] Koibatek Sub County		2,500
Oxford / AstraZeneca	ACB3580 - Oxford/AstraZeneca	[subCounty] Marigat Sub County		800
Oxford / AstraZeneca	ACB3580 - Oxford/AstraZeneca	[subCounty] Mogotio Sub County		1,700
Oxford / AstraZeneca	ACB3580 - Oxford/AstraZeneca	[subCounty] Tiaty East Sub County		100
Oxford / AstraZeneca	ACB3796 - Oxford/AstraZeneca	[subCounty] Baringo Central Sub County	6,000	
Oxford / AstraZeneca	ACB3796 - Oxford/AstraZeneca	[facility] Baringo County Referral Hospital		1,000

Vaccine Type	Batch	Sub County / Facility	Doses Received	Doses Dispatched
Oxford / AstraZeneca	ACB3796 - Oxford/AstraZeneca	[facility] Talai Dispensary		50
Oxford / AstraZeneca	ACB3796 - Oxford/AstraZeneca	[subCounty] Baringo North Sub County		330
Oxford / AstraZeneca	ACB3796 - Oxford/AstraZeneca	[subCounty] Koibatek Sub County		1,000
Oxford / AstraZeneca	ACB3796 - Oxford/AstraZeneca	[subCounty] Marigat Sub County		400
Oxford / AstraZeneca	ACB3796 - Oxford/AstraZeneca	[subCounty] Mogotio Sub County		1,500
Oxford / AstraZeneca Total			14,000	12,280
Janssen	ACB6958 - Janssen (Ad26.CO2-S)	[subCounty] Baringo Central Sub County	10,000	
Janssen	ACB6958 - Janssen (Ad26.CO2-S)	[facility] Baringo County Referral Hospital		2,110
Janssen	ACB6958 - Janssen (Ad26.CO2-S)	[subCounty] Baringo North Sub County		1,340
Janssen	ACB6958 - Janssen (Ad26.CO2-S)	[subCounty] Koibatek Sub County		3,050
Janssen	ACB6958 - Janssen (Ad26.CO2-S)	[subCounty] Marigat Sub County		500
Janssen	ACB6958 - Janssen (Ad26.CO2-S)	[subCounty] Mogotio Sub County		2,000
Janssen	ACB6958 - Janssen (Ad26.CO2-S)	[subCounty] Tiaty East Sub County		1,000
Janssen	ACB7168 - Janssen (Ad26.CO2-S)	[subCounty] Baringo Central Sub County	14,800	
Janssen	ACB7168 - Janssen (Ad26.CO2-S)	[facility] Baringo County Referral Hospital		2,000
Janssen	ACB7168 - Janssen (Ad26.CO2-S)	[facility] Talai Dispensary		50
Janssen	ACB7168 - Janssen (Ad26.CO2-S)	[subCounty] Baringo North Sub County		2,000
Janssen	ACB7168 - Janssen (Ad26.CO2-S)	[subCounty] East Pokot Sub County		1,000
Janssen	ACB7168 - Janssen (Ad26.CO2-S)	[subCounty] Koibatek Sub County		800
Janssen	ACB7168 - Janssen (Ad26.CO2-S)	[subCounty] Marigat Sub County		2,500
Janssen	ACB7168 - Janssen (Ad26.CO2-S)	[subCounty] Mogotio Sub County		2,500
Janssen	ACB7168 - Janssen (Ad26.CO2-S)	[subCounty] Tiaty East Sub County		1,400
Janssen Total			24,800	22,250
Pfizer	FG3532 - Pfizer	[subCounty] Baringo Central Sub County	5,850	
Pfizer	FG3532 - Pfizer	[subCounty] Baringo North Sub County		1,170
Pfizer	FG3532 - Pfizer	[subCounty] Koibatek Sub County		1,170

Vaccine Type	Batch	Sub County / Facility	Doses Received	Doses Dispatched
Pfizer	FG3532 - Pfizer	[subCounty] Marigat Sub County		1,170
Pfizer	FG3532 - Pfizer	[subCounty] Mogotio Sub County		1,170
Pfizer	FJ8759 - Pfizer	[subCounty] Baringo Central Sub County	41,244	
Pfizer	FJ8759 - Pfizer	[facility] Baringo County Referral Hospital		7,260
Pfizer	FJ8759 - Pfizer	[facility] Talai Dispensary		114
Pfizer	FJ8759 - Pfizer	[subCounty] Baringo North Sub County		3,612
Pfizer	FJ8759 - Pfizer	[subCounty] East Pokot Sub County		1,170
Pfizer	FJ8759 - Pfizer	[subCounty] Koibatek Sub County		9,360
Pfizer	FJ8759 - Pfizer	[subCounty] Marigat Sub County		3,510
Pfizer	FJ8759 - Pfizer	[subCounty] Mogotio Sub County		9,942
Pfizer	FJ8759 - Pfizer	[subCounty] Tiaty East Sub County		1,170
Pfizer	FT5331 - Pfizer	[subCounty] Baringo Central Sub County	5,850	
Pfizer	FT5331 - Pfizer	[facility] Baringo County Referral Hospital		1,170
Pfizer	FT5331 - Pfizer	[facility] Talai Dispensary		18
Pfizer	FT5331 - Pfizer	[subCounty] Baringo North Sub County		582
Pfizer	FT5331 - Pfizer	[subCounty] Koibatek Sub County		1,170
Pfizer	FT5331 - Pfizer	[subCounty] Mogotio Sub County		1,170
Pfizer Total			52,944	44,928
Oxford / AstraZeneca	NL0251 - Oxford/AstraZeneca	[subCounty] Baringo Central Sub County	11,800	
Oxford / AstraZeneca	NL0251 - Oxford/AstraZeneca	[facility] Baringo County Referral Hospital		2,200
Oxford / AstraZeneca	NL0251 - Oxford/AstraZeneca	[facility] Kerio Hospital		40
Oxford / AstraZeneca	NL0251 - Oxford/AstraZeneca	[facility] Talai Dispensary		50
Oxford / AstraZeneca	NL0251 - Oxford/AstraZeneca	[subCounty] Baringo North Sub County		1,900
Oxford / AstraZeneca	NL0251 - Oxford/AstraZeneca	[subCounty] East Pokot Sub County		250
Oxford / AstraZeneca	NL0251 - Oxford/AstraZeneca	[subCounty] Koibatek Sub County		3,400
Oxford / AstraZeneca	NL0251 - Oxford/AstraZeneca	[subCounty] Marigat Sub County		1,800
Oxford / AstraZeneca	NL0251 - Oxford/AstraZeneca	[subCounty] Mogotio Sub County		900

Vaccine Type	Batch	Sub County / Facility	Doses Received	Doses Dispatched
Oxford / AstraZeneca	NL0251 - Oxford/AstraZeneca	[subCounty] Tiaty East Sub County		250
Oxford / AstraZeneca	NN0195 - Oxford/AstraZeneca	[subCounty] Baringo Central Sub County	500	
Oxford / AstraZeneca	NN0195 - Oxford/AstraZeneca	[facility] Baringo County Referral Hospital		200
Oxford / AstraZeneca	NN0195 - Oxford/AstraZeneca	[facility] Talai Dispensary		50
Oxford / AstraZeneca	NN0195 - Oxford/AstraZeneca	[subCounty] Baringo North Sub County		100
Oxford / AstraZeneca Total			12,300	11,140
Janssen	XE436 - Janssen (Ad26.COv2-S)	[subCounty] Baringo Central Sub County	1,500	
Janssen	XE436 - Janssen (Ad26.COv2-S)	[facility] Baringo County Referral Hospital		100
Janssen	XE436 - Janssen (Ad26.COv2-S)	[subCounty] Baringo North Sub County		200
Janssen	XE436 - Janssen (Ad26.COv2-S)	[subCounty] East Pokot Sub County		180
Janssen	XE436 - Janssen (Ad26.COv2-S)	[subCounty] Koibatek Sub County		200
Janssen	XE436 - Janssen (Ad26.COv2-S)	[subCounty] Marigat Sub County		200
Janssen	XE436 - Janssen (Ad26.COv2-S)	[subCounty] Mogotio Sub County		200
Janssen	XE436 - Janssen (Ad26.COv2-S)	[subCounty] Tiaty East Sub County		180
Janssen	XE442 - Janssen (Ad26.COv2-S)	[subCounty] Baringo Central Sub County	17,000	
Janssen	XE442 - Janssen (Ad26.COv2-S)	[facility] Baringo County Referral Hospital		1,950
Janssen	XE442 - Janssen (Ad26.COv2-S)	[facility] Talai Dispensary		100
Janssen	XE442 - Janssen (Ad26.COv2-S)	[subCounty] Baringo North Sub County		2,200
Janssen	XE442 - Janssen (Ad26.COv2-S)	[subCounty] East Pokot Sub County		2,300
Janssen	XE442 - Janssen (Ad26.COv2-S)	[subCounty] Koibatek Sub County		2,500
Janssen	XE442 - Janssen (Ad26.COv2-S)	[subCounty] Marigat Sub County		3,200
Janssen	XE442 - Janssen (Ad26.COv2-S)	[subCounty] Mogotio Sub County		2,000
Janssen	XE442 - Janssen (Ad26.COv2-S)	[subCounty] Tiaty East Sub County		2,300
Janssen	XE443 - Janssen (Ad26.COv2-S)	[subCounty] Baringo Central Sub County	1,800	
Janssen	XE443 - Janssen (Ad26.COv2-S)	[facility] Baringo County Referral Hospital		250
Janssen	XE443 - Janssen (Ad26.COv2-S)	[subCounty] Baringo North Sub County		500

Vaccine Type	Batch	Sub County / Facility	Doses Received	Doses Dispatched
Janssen	XE443 - Janssen (Ad26.COVS2-S)	[subCounty] Koibatek Sub County		600
Janssen	XE443 - Janssen (Ad26.COVS2-S)	[subCounty] Marigat Sub County		200
Janssen	XE443 - Janssen (Ad26.COVS2-S)	[subCounty] Mogotio Sub County		200
Janssen Total			20,300	19,560
Grand Total			183,000	167,272

Appendix 6 - Vaccine Utilization at County Level

Vaccine	Facility	Receipts	Vaccinations Administered	Total Physical Count	Expired and Disposed	Damaged and Disposed	Wastage and Disposed	Unexplained Variance
Janssen	Baringo Central	50,100	501	850	-	-	-	48,749
	Baringo North		1,498	195	95	-	-	-1,788
	East Pokot		94	-	-	-	-	-94
	Koibatek		624	200	-	-	-	-824
	Marigat		74	-	-	-	-	-74
	Mogotio		10	705	-	-	-	-715
	Talai Dispensary		76	-	-	-	-	-76
	Baringo County Referral Hospital		1,189	-	-	-	-	-1,189
	Kerio Hospital		16	-	-	-	-	-16
	Tinomoi Dispensary		147	-	-	-	-	-147
	Olarabel Dispensary		29	-	-	-	-	-29
	Mochongoi Health Centre		50	-	-	-	-	-50
	Marigat Sub District Hospital		129	-	-	-	-	-129
	Kokwa Dispensary		123	-	-	-	-	-123
	Kimalel Health Centre		57	-	-	-	-	-57
	Kampi Samaki Health Centre		45	-	-	-	-	-45
	Sirwa Dispensary		160	-	60	-	-	-220
	Olkokwe Dispensary		79	-	-	-	-	-79
	Ngubereti Health Centre		70	-	120	-	-	-190
	Ng'Endalel Dispensary		56	-	-	-	-	-56
	Mugurin Health Centre		85	-	-	5	-	-90

Vaccine	Facility	Receipts	Vaccinations Administered	Total Physical Count	Expired and Disposed	Damaged and Disposed	Wastage and Disposed	Unexplained Variance
	Cheberen Dispensary		91	-	-	-	-	-91
	Chemoinoi Dispensary		129	-	10	-	-	-139
	Molosirwe Dispensary		26	-	-	-	77	-103
	Molos Dispensary		85	-	-	-	-	-85
	Mogotio Sub County Hospital Baringo		101	-	-	-	-5	-96
	Emining Health Centre		347	-	-	-	-	-347
	Kisanana Health Centre		42	-	-	-	6	-48
	Kipsogon Dispensary		166	-	45	-	-	-211
	Kipkitur Dispensary		160	-	-	-	3	-163
	Kimose Dispensary		55	-	-	-	-	-55
	Kapkein Dispensary		84	-	-	-	14	-98
	Kamar Dispensary		65	-	-	-	-	-65
	Simotwet Dispensary (Koibatek)		5	5	40	-	-	-50
	Tunoiwo Dispensary		162	-	-	-	-	-162
	Kuikui Healty Centre		39	-	-	-	-	-39
	Barwessa Health Centre		309	-	-	-	-	-309
	Baringo County Referral Hospital		1,725	120	-	-	-	-1,845
	Tinomoi Dispensary		50	-	-	-	-	-50
	Sabor Dispensary		4	35	-	-	-	-39
	Mochongoi Health Centre		5	170	-	-	-	-175
	Meisori Dispensary		8	-	-	-	-	-8
	Bekibon Dispensary		7	10	-	-	-	-17

Vaccine	Facility	Receipts	Vaccinations Administered	Total Physical Count	Expired and Disposed	Damaged and Disposed	Wastage and Disposed	Unexplained Variance
	Marigat Sub District Hospital		5	-	-	-	-	-5
	Loboi Health Centre		-	-	55	-	-	-55
	Kokwa Dispensary		156	-	-	-	-	-156
	Kimalel Health Centre		16	-	-	-	-	-16
	Eldume Dispensary		42	-	-	-	-	-42
	Kapkuikui Dispensary		5	-	-	-	-	-5
	Waseges Dispensary		96	-	-	-	-	-96
	Sore Dispensary		111	25	-	-	3	-139
	Rosoga Dispensary		48	30	-	-	8	-86
	Olkokwe Dispensary		102	-	20	-	-	-122
	Oldebes Dispensary		51	-	-	-	-	-51
	Mugurin Health Centre		49	-	-	-	-	-49
	Cheberen Dispensary		84	100	-	-	-	-184
	Molosirwe Dispensary		32	-	-	-	-	-32
	Molos Dispensary		32	-	-	-	-	-32
	Molok Dispensary		62	-	5	-	-	-67
	Mogotio Sub County Hospital		165	-	-	-	-	-165
	Maji Moto Dispensary		39	100	-	-	-	-139
	Emsos Dispensary		13	-	-	-	-	-13
	Koitebes Dispensary		49	-	-	-	-	-49
	Kisanana Health Centre		39	-	-	-	3	-42
	Kiptoim Dispensary		52	-	-	-	9	-61

Vaccine	Facility	Receipts	Vaccinations Administered	Total Physical Count	Expired and Disposed	Damaged and Disposed	Wastage and Disposed	Unexplained Variance
	Kipkitur Dispensary		18	-	-	-	22	-40
	Kimose Dispensary		111	-	-	-	7	-118
	Kibotany Dispensary		110	-	-	-	-	-110
	Arama Dispensary		106	90	-	-	-	-196
	Torongu Health Centre		14	-	-	-	-	-14
	Timboroa Health Centre		100	100	-	-	24	-224
	Sitata Dispensary		56		-		-	-56
	Saos Dispensary		620	5	-	-	29	-654
	Sagat Dispensary		244	30	-	-	26	-300
	Sabatia Dispensary		52	-	-	-	7	-59
	Maji Mazuri Dispensary		150	-	125	-	-17	-258
	Kiplombe Dispensary (Koibatek)		124	120	-	-	-	-244
	Eldama Ravine (Aic) Health Centre		46	25	-	-	24	-95
	Equator Health Centre		423	-	-	-	-	-423
	Solian Dispensary		294	-	-	-	-19	-275
	Sigoro Dispensary		563	-	-	-	-	-563
	Pnai Dispensary		42	-	-	-	-	-42
	Ngoron Dispensary		87	-	-	-	-	-87
	Loiwat Dispensary		35	-	-	-	-	-35
	Kolowa Health Centre		-	-	-	-	-	-
	Kapunyany Dispensary		93	-	-	-	-	-93
	Kuikui Healty Centre		153	-	-	-	-	-53

Vaccine	Facility	Receipts	Vaccinations Administered	Total Physical Count	Expired and Disposed	Damaged and Disposed	Wastage and Disposed	Unexplained Variance
	Kabartonjo Referral Hospital		24	-	-	-	-	-24
	Talai Dispensary		2	-	10	-	-	-12
	Baringo County Referral Hospital		788	530	60	-	-	-1,378
	Tinomoi Dispensary		-	40	-	-	-	-40
	Meisori Dispensary		127	-	-	-	-	-127
	Kokwa Dispensary		53	-	-	-	-	-53
	Waseges Dispensary		86	-	5	-	9	-100
	Sagasagik Dispensary		85	-	10	-	13	-108
	Radat Dispensary		40	-	75	-	-	-115
	Olkokwe Dispensary		2	-	-	-	-	-2
	Oldebes Dispensary		40	25	-	-	-	-65
	Cheberen Dispensary		51	110	-	-	-	-161
	Chemoinoi Dispensary		10	-	-	-	-	-10
	Molos Dispensary		-	45	-	-	-	-45
	Mogotio Sub County Hospital		71	50	-	-	-	-121
	Maji Moto Dispensary		39	-	-	-	-	-39
	Emining Health Centre		196	50	-	-	-	-246
	Kisanana Health Centre		8	90	-	-	3	-101
	Kiptoim Dispensary		7	-	-	-	-	-7
	Kipsogon Dispensary		99	50	-	-	-	-149
	Kipkitur Dispensary		8	-	35	-	-	-43
	Kimose Dispensary		1	-	45	-	-	-46

Vaccine	Facility	Receipts	Vaccinations Administered	Total Physical Count	Expired and Disposed	Damaged and Disposed	Wastage and Disposed	Unexplained Variance
	Kapkein Dispensary		5	-	35	-	-	-40
	Kamar Dispensary		-	50	-	-	-	-50
	Arama Dispensary		-	-	-	-	-	-
	Tinet Dispensary (Koibatek)		41	85	-	-	13	-139
	Kiptuno Dispensary		39	-	-	-	-	-39
	Kabiyet Dispensary		38	45	-	-	-	-83
	Kabimoi Dispensary		48	45	-	-	-	-93
	Barpello Dispensary		5	60	-	-	-	-65
	Kositei Dispensary		92	-	-	-	-	-92
	Chemolingot District Hospital		295	-	-	-	-	-295
	Kuikui Healty Centre		17	-	250	-	-	-267
	Kabartonjo Referral Hospital		825	24	-	-	-	-849
	Barwessa Health Centre		385	15	-	-	-	-400
	Baringo County Referral Hospital		176	-	-	-	-	-176
	Tangulbei Sub County Hospital		538	-	-	-	-	-538
	Tinomoi Dispensary		11	-	-	-	-	-11
	Olarabel Dispensary		500	-	-	-	-	-500
	Mochongoi Health Centre		460	-	-	-	-	-460
	Marigat Sub District Hospital		141	-	-	-	-	-141
	Kimalel Health Centre		288	-	-	-	-	-288
	Kampi Samaki Health Centre		17	-	-	-	-	-17
	Illingarua Dispensary		321	-	-	-	-	-321

Vaccine	Facility	Receipts	Vaccinations Administered	Total Physical Count	Expired and Disposed	Damaged and Disposed	Wastage and Disposed	Unexplained Variance
	Mogotio Sub County Hospital		213	-	-	-	-	-213
	Sitata Dispensary		9	-	-	-	-	-9
	Eldama Ravine District Hospital		283	-	-	-	-	-283
	Ngoron Dispensary		9	-	-	-	-	-9
	Lodengo Health Centre		47	-	-	-	-	-47
	Barpello Dispensary		15	-	-	-	-	-15
	Chepturu Dispensary		11	-	-	-	-	-11
	Chemolingot District Hospital		211	-	-	-	-	-211
	Kabartonjo Referral Hospital		210	-	-	-	-	-210
	Talai Dispensary		60	-	-	-	-	-60
	Baringo County Referral Hospital		2,139	50	15	-	-	-2,204
	Tuiyobei Dispensary		352	-	-	-	-	-352
	Tinomoi Dispensary		62	-	-	-	-	-62
	Sandai Dispensary		73	-	-	-	-	-73
	Olarabel Dispensary		25	-	-	-	-	-25
	Mochongoi Health Centre		169	-	-	-	-	-169
	Marigat Sub District Hospital		455	-	-	-	-	-455
	Marigat Catholic Mission		77	-	-	-	-	-77
	Loboi Health Centre		167	-	-	-	-	-167
	Kokwa Dispensary		211	-	-	-	-	-211
	Eldume Dispensary		232	70	-	-	-	-302
	Kimalel Health Centre		93	-	-	-	-	-93

Vaccine	Facility	Receipts	Vaccinations Administered	Total Physical Count	Expired and Disposed	Damaged and Disposed	Wastage and Disposed	Unexplained Variance
	Kampi Samaki Health Centre		129	-	-	-	-	-129
	Sore Dispensary		199	-	-	-	-	-199
	Radat Dispensary		175	-	-	-	-	-175
	Ngubereti Health Centre		123	-	-	-	-	-123
	Molosirwe Dispensary		471	-	-	-	-	-471
	Mogotio Sub County Hospital		1,159	-	-	-	-	-1,159
	Emining Health Centre		115	-	-	-	-	-115
	Kisanana Health Centre		186	-	-	-	10	-196
	Kimose Dispensary		26	-	-	-	-	-26
	Timboroa Health Centre		83	-	-	-	-2	-81
	Sitata Dispensary		41	-	-	-	-	-41
	Saos Dispensary		142	-	-	-	-11	-131
	Mercy Hospital		64	-	-	-	-	-64
	Eldama Ravine District Hospital		603	-	-	-	-	-603
	Esageri Health Centre		117	-	78	-	-	-195
	Equator Health Centre		67	-	-	-	2	-69
	Solian Dispensary		124	-	-	-	-	-124
	Sigoro Dispensary		-	-	-	-	-	-
	Muserechi Dispensary		-	-	-	-	-	-
	Pnai Dispensary		184	-	-	-	-	-184
	Ngoron Dispensary		149	-	-	-	-	-149
	Loiwat Dispensary		287	-	-	-	-	-287

Vaccine	Facility	Receipts	Vaccinations Administered	Total Physical Count	Expired and Disposed	Damaged and Disposed	Wastage and Disposed	Unexplained Variance
	Lodengo Health Centre		338	-	-	-	-	-338
	Barpello Dispensary		151	-	-	-	-	-151
	Kositei Dispensary		164	-	-	-	-	-164
	Kolowa Health Centre		463	-	-	-	-	-463
	Chepturu Dispensary		207	-	-	-	-	-207
	Chemolingot District Hospital		525	-	-	-	-	-525
	Kabartonjo Referral Hospital		1,639	-	-	-	-	-1,639
	Chemura		84	-	-	-	-	-84
	Barwessa Health Centre		481	-	-	-	-	-481
	Baringo County Referral Hospital		636	-	-	-	-	-636
	Tinmoi Dispensary		5	-	-	-	-	-5
	Marigat Sub District Hospital		598	-	-	-	-	-598
	Loboi Health Centre		11	-	-	-	-	-11
	Kokwa Dispensary		19	-	-	-	-	-19
	Kimalel Health Centre		-	-	-	-	-	-
	Kapkuikui Dispensary		34	-	-	-	-	-34
	Mogotio Sub County Hospital		231	-	-	-	-	-231
	Torongo Health Centre		45	-	-	-	-	-45
	Mercy Hospital		75	-	-	-	-	-75
	Esageri Health Centre		23	-	-	-	-	-23
	Eldama Ravine District Hospital		1,880	-	-	-	-	-1,880
	Equator Health Centre		21	-	-	-	-	-21

Vaccine	Facility	Receipts	Vaccinations Administered	Total Physical Count	Expired and Disposed	Damaged and Disposed	Wastage and Disposed	Unexplained Variance
	Kipcherere Dispensary		304	-	-	-	-	-304
	Kabartonjo Referral Hospital		516	-	-	-	-	-516
Janssen Total		50,100	37,462	4,349	1,193	5	258	6,833
Moderna	Baringo North	-	20	-	-	-	-	-20
	East Pokot	-	12	-	40	-	-	-52
	Koibatek	-	18	-	84	-	-	-102
	Marigat	-	3	-	-	-	-	-3
	Mogotio	-	-	-	-	-	-	-
	Tiaty East	-	69	-	-	-	-	-69
	Baringo County Referral Hospital		1,338	-	-	-	-	-1,338
	Tangulbei Sub County Hospital		82	-	-	-	-	-82
	Tinomoi Dispensary		21	-	-	-	-	-21
	Olarabel Dispensary		43	-	-	-	-	-43
	Mochongoi Health Centre		245	-	-	-	-	-245
	Marigat Sub District Hospital		526	-	-	-	-	-526
	Loboi Health Centre		27	-	-	-	-	-27
	Kimalel Health Centre		101	-	-	-	-	-101
	Kampi Samaki Health Centre		45	-	-	-	-	-45
	Illingarua Dispensary		193	-	-	-	-	-193
	Sirwa Dispensary		24	-	-	-	-	-24
	Mogotio Sub County Hospital		902	-	-	-	19	-921
	Emining Health Centre		122	-	-	-	-	-122

Vaccine	Facility	Receipts	Vaccinations Administered	Total Physical Count	Expired and Disposed	Damaged and Disposed	Wastage and Disposed	Unexplained Variance
	Kisanana Health Centre		40	-	-	-	-	-40
	Torongo Health Centre		28	-	-	-	-	-28
	Timboroa Health Centre		41	-	-	-	-	-41
	Sitata Dispensary		12	-	-	-	-	-12
	Saos Dispensary		46	-	-	-	-4	-42
	Mercy Hospital		221	-	-	-	-	-221
	Maji Mazuri Dispensary		96	-	-	-	-	-96
	Eldama Ravine District Hospital		1,552	-	-	-	-	-1,552
	Esageri Health Centre		59	-	-	-	-	-59
	Equator Health Centre		118	-	-	-	-	-118
	Solian Dispensary		77	-	-	-	-	-77
	Sigoro Dispensary		41	-	-	-	-	-41
	Muserechi Dispensary		43	-	-	-	-	-43
	Ngoron Dispensary		42	-	-	-	-	-42
	Loiwat Dispensary		31	-	-	-	-	-31
	Lodengo Health Centre		68	-	-	-	-	-68
	Barpello Dispensary		1	-	-	-	-	-1
	Chepturu Dispensary		14	-	-	-	-	-14
	Chemolingot District Hospital		79	-	-	-	-	-79
	Kabartonjo Referral Hospital		117	-	-	-	-	-117
	Barwessa Health Centre		170	-	-	-	-	-170
	Baringo County Referral Hospital		1,593	-	-	-	-	-1,593

Vaccine	Facility	Receipts	Vaccinations Administered	Total Physical Count	Expired and Disposed	Damaged and Disposed	Wastage and Disposed	Unexplained Variance
	Tangulbei Sub County Hospital		235	-	-	-	-	-235
	Mochongoi Health Centre		120	-	-	-	-	-120
	Marigat Sub District Hospital		421	-	-	-	-	-421
	Sirwa Dispensary		29	-	-	-	-	-29
	Mogotio Sub County Hospital		913	-	-	-	-30	-883
	Emining Health Centre		29	-	-	-	-	-29
	Kisanana Health Centre		44	-	-	-	-	-44
	Torong Health Centre		28	-	-	-	-	-28
	Timboroa Health Centre		28	-	-	-	-	-28
	Saos Dispensary		28	-	-	-	-	-28
	Mercy Hospital		117	-	-	-	-14	-103
	Maji Mazuri Dispensary		28	-	-	-	-	-28
	Eldama Ravine District Hospital		1,417	-	-	-	-115	-1,302
	Esageri Health Centre		28	-	-	-	-	-28
	Equator Health Centre		29	-	-	-	-	-29
	Solian Dispensary		31	-	-	-	-19	-12
	Sigoro Dispensary		28	-	-	-	-	-28
	Muserechi Dispensary		28	-	-	-	-	-28
	Pnai Dispensary		15	-	-	-	-	-15
	Ngoron Dispensary		29	-	-	-	-	-29
	Loiwat Dispensary		10	-	-	-	-	-10
	Barpello Dispensary		-	-	-	-	-	-

Vaccine	Facility	Receipts	Vaccinations Administered	Total Physical Count	Expired and Disposed	Damaged and Disposed	Wastage and Disposed	Unexplained Variance
	Lodengo Health Centre		30	-	-	-	-	-30
	Chemolingot District Hospital		123	-	-	-	-	-123
	Kabartonjo Referral Hospital		478	-	-	-	-	-478
	Baringo County Referral Hospital		3	-	-	-	-	-3
	Baringo County Referral Hospital		237	-	-	-	-	-237
	Tinomoi Dispensary		73	-	-	-	-	-73
	Sandai Dispensary		4	-	-	-	-	-4
	Mochongoi Health Centre		36	-	-	-	-	-36
	Marigat Sub District Hospital		2	-	-	-	-	-2
	Loboi Health Centre		75	-	-	-	-	-75
	Kokwa Dispensary		30	-	-	-	-	-30
	Eldume Dispensary		43	-	-	-	-	-43
	Kimalel Health Centre		78	-	-	-	-	-78
	Kampi Samaki Health Centre		56	-	-	-	-	-56
	Sirwa Dispensary		141	-	-	-	-	-141
	Radat Dispensary		96	-	28	-	13	-137
	Ngubereti Health Centre		109	-	-	-	-	-109
	Cheberen Dispensary		123	-	-	-	-	-123
	Molosirwe Dispensary		182	-	-	-	-	-182
	Mogotio Sub County Hospital		201	-	-	-	15	-216
	Emining Health Centre		69	-	-	-	-	-69
	Timboroa Health Centre		170	-	112	-	8	-290

Vaccine	Facility	Receipts	Vaccinations Administered	Total Physical Count	Expired and Disposed	Damaged and Disposed	Wastage and Disposed	Unexplained Variance
	Sitata Dispensary		63		-			-63
	Saos Dispensary		111	-	-	-	6	-117
	Mercy Hospital		7	-	-	-	-	-7
	Maji Mazuri Dispensary		334	-	42	-	-	-376
	Eldama Ravine District Hospital		459	-	-	-	-	-459
	Esageri Health Centre		113	-	-	-	-	-113
	Equator Health Centre		203	-	-	-	3	-206
	Solian Dispensary		136	-	28	-	16	-180
	Sigoro Dispensary		22	-	-	-	-	-22
	Pnai Dispensary		38	-	-	-	-	-38
	Ngoron Dispensary		51	-	-	-	-	-51
	Loiwat Dispensary		4	-	-	-	-	-4
	Lodengo Health Centre		37	-	-	-	-	-37
	Barpello Dispensary		2	-	28	-	-	-30
	Kositei Dispensary		-	28	-	-	-	-28
	Kolowa Health Centre		126	-	-	-	-	-126
	Chemolingot District Hospital		17	-	-	-	-	-17
	Kabartonjo Referral Hospital		384	-	-	-	-	-384
	Chemura		28	-	-	-	-	-28
	Barwessa Health Centre		1,005	-	-	-	-	-1,005
	Baringo Central	6,580		-	-	-	-	6,580
	Baringo Central	10,410		-	-	-	-	10,410

Vaccine	Facility	Receipts	Vaccinations Administered	Total Physical Count	Expired and Disposed	Damaged and Disposed	Wastage and Disposed	Unexplained Variance
	Baringo Central		446					-446
Moderna Total		16,990	17,860	28	362	-	-102	-1,158
Oxford / AstraZeneca	Baringo Central	57,710	2,067	-	2,250	-	-	53,393
	Baringo North	-	87	-	160	-	-	-247
	East Pokot	-	55	-	360	-	-	-415
	Koibatek	-	32	-	-	-	-	-32
	Marigat	-	18	-	-	-	-	-18
	Mogotio	-	2	-	60	-	-	-62
	Tiaty East	-	87	-	550	-	-	-637
	Baringo County Referral Hospital		1,730	-	-	-	-	-1,730
	Tangulbei Sub County Hospital		116	-	-	-	-	-116
	Olarabel Dispensary		-	-	-	-	-	-
	Mochongoi Health Centre		167	-	-	-	-	-167
	Marigat Sub District Hospital		837	-	-	-	-	-837
	Marigat Catholic Mission		-	-	-	-	-	-
	Kampi Samaki Health Centre		62	-	-	-	-	-62
	Illingarua Dispensary		44	-	-	-	-	-44
	Mogotio Sub County Hospital		552	-	-	-	25	-577
	Eldama Ravine District Hospital		2,028	-	-	-	-7	-2,021
	Chemolingot District Hospital		107	-	-	-	-	-107
	Kabartonjo Referral Hospital		399	-	-	-	-	-399
	Baringo County Referral Hospital		873	-	-	-	-	-873

Vaccine	Facility	Receipts	Vaccinations Administered	Total Physical Count	Expired and Disposed	Damaged and Disposed	Wastage and Disposed	Unexplained Variance
	Tinomoi Dispensary		21	-	-	-	-	-21
	Mochongoi Health Centre		135	-	-	-	-	-135
	Marigat Sub District Hospital		386	-	-	-	-	-386
	Marigat Catholic Mission		-	-	-	-	-	-
	Kampi Samaki Health Centre		11	-	-	-	-	-11
	Sirwa Dispensary		41	-	-	-	20	-61
	Olkokwe Dispensary		16	-	-	-	-	-16
	Mogotio Sub County Hospital		117	-	-	-	1	-118
	Kisanana Health Centre		22	-	-	-	-	-22
	Maji Mazuri Dispensary		47	-	-	-	-	-47
	Eldama Ravine District Hospital		761	-	-	-	-	-761
	Muserechi Dispensary		20	-	-	-	-	-20
	Pnai Dispensary		6	-	-	-	-	-6
	Ngoron Dispensary		-	-	-	-	-	-
	Loiwat Dispensary		9	-	-	-	-	-9
	Barpello Dispensary		4	-	-	-	-	-4
	Lodengo Health Centre		3	-	-	-	-	-3
	Kositei Dispensary		19	-	-	-	-	-19
	Chemolingot District Hospital		52	-	-	-	-	-52
	Kabartonjo Referral Hospital		328	-	-	-	-	-328
	Barwessa Health Centre		96	-	-	-	-	-96
	Baringo County Referral Hospital		218	-	-	-	-	-218

Vaccine	Facility	Receipts	Vaccinations Administered	Total Physical Count	Expired and Disposed	Damaged and Disposed	Wastage and Disposed	Unexplained Variance
	Tangulbei Sub County Hospital		8	-	20	-	-	-28
	Tinomoi Dispensary		-	-	-	-	-	-
	Mochongoi Health Centre		-	-	-	-	-	-
	Marigat Sub District Hospital		24	-	-	-	-	-24
	Kimalel Health Centre		32	-	-	-	-	-32
	Sirwa Dispensary		296	-	-	-	-	-296
	Olkokwe Dispensary		140	-	-	-	-	-140
	Mugurin Health Centre		69	-	-	-	-	-69
	Mogotio Sub County Hospital		506	-	10	-	-11	-505
	Emining Health Centre		174	-	-	-	-	-174
	Kisanana Health Centre		300	-	-	-	-	-300
	Torongo Health Centre		176	-	-	-	-	-176
	Timboroa Health Centre		212	-	-	-	-	-212
	Sitata Dispensary		-	-	-	-	-	-
	Saos Dispensary		47	-	-	-	-	-47
	Mercy Hospital		99	-	-	-	2	-101
	Maji Mazuri Dispensary		93	-	-	-	-	-93
	Eldama Ravine District Hospital		652	-	-	-	-	-652
	Esageri Health Centre		545	-	-	-	-	-545
	Equator Health Centre		92	-	-	-	30	-122
	Solian Dispensary		89	-	-	-	-	-89
	Sigoro Dispensary		77	-	-	-	-	-77

Vaccine	Facility	Receipts	Vaccinations Administered	Total Physical Count	Expired and Disposed	Damaged and Disposed	Wastage and Disposed	Unexplained Variance
	Muserechi Dispensary		130	-	-	-	-	-130
	Lodengo Health Centre		-	-	-	-	-	-
	Chemolingot District Hospital		52	-	-	-	-	-52
	Kabartonjo Referral Hospital		70	-	-	-	-	-70
	Barwessa Health Centre		38	-	-	-	-	-38
	Baringo County Referral Hospital		785	-	30	-	-	-815
	Tinomoi Dispensary		17	-	-	-	-	-17
	Bekibon Dispensary		15	-	-	-	-	-15
	Meisori Dispensary		24	-	-	-	-	-24
	Loboi Health Centre		31	-	-	-	-	-31
	Kokwa Dispensary		2	-	-	-	-	-2
	Kasiela Dispensary		56	-	-	-	-	-56
	Sagasagik Dispensary		-	-	-	-	-	-
	Oldebes Dispensary		1	-	-	-	-	-1
	Mugurin Health Centre		12	-	-	-	-	-12
	Mogotio Sub County Hospital		-	-	180	-	-	-180
	Emining Health Centre		21	-	-	-	-	-21
	Kisanana Health Centre		-	-	-	-	26	-26
	Kiptoim Dispensary		-	-	-	-	-	-
	Kipkitur Dispensary		41	-	-	-	7	-48
	Kimngorom Dispensary		-	-	30	-	-	-30
	Kamar Dispensary		-	-	-	-	-	-

Vaccine	Facility	Receipts	Vaccinations Administered	Total Physical Count	Expired and Disposed	Damaged and Disposed	Wastage and Disposed	Unexplained Variance
	Arama Dispensary		10	-	140	-	21	-171
	Timboroa Health Centre		-	-	100	-	-	-100
	Maji Mazuri Dispensary		3	-	70	-	-	-73
	Eldama Ravine (Aic) Health Centre		165	-	-	-	64	-229
	Kabartonjo Referral Hospital		229	-	-	-	-	-229
	Barwessa Health Centre		197	-	-	-	-	-197
	Baringo County Referral Hospital		2,309	-	-	-	-	-2,309
	Tuiyobei Dispensary		61	-	-	-	-	-61
	Tinomoi Dispensary		25	-	-	-	-	-25
	Sandai Dispensary		118	-	-	-	-	-118
	Olarabel Dispensary		177	-	-	-	-	-177
	Mochongoi Health Centre		-	-	-	-	-	-
	Marigat Sub District Hospital		332	-	-	-	-	-332
	Marigat Catholic Mission		18	-	-	-	-	-18
	Loboi Health Centre		182	-	-	-	-	-182
	Kokwa Dispensary		73	-	-	-	-	-73
	Eldume Dispensary		35	-	-	-	-	-35
	Kimalel Health Centre		158	-	-	-	-	-158
	Kapkuikui Dispensary		-	-	-	-	-	-
	Kampi Samaki Health Centre		183	-	-	-	-	-183
	Illingarua Dispensary		352	-	-	-	-	-352
	Sirwa Dispensary		229	-	-	-	26	-255

Vaccine	Facility	Receipts	Vaccinations Administered	Total Physical Count	Expired and Disposed	Damaged and Disposed	Wastage and Disposed	Unexplained Variance
	Olkokwe Dispensary		146	-	-	-	4	-150
	Mugurin Health Centre		462	-	-	-	-	-462
	Mogotio Sub County Hospital		1,026	-	-	-	-103	-923
	Emining Health Centre		875	-	-	-	-	-875
	Kisanana Health Centre		504	-	-	-	7	-511
	Torong Health Centre		258	-	-	-	-	-258
	Timboroa Health Centre		248	-	-	-	-	-248
	Sitata Dispensary		124		-			-124
	Saos Dispensary		47	-	-	-	-3	-44
	Mercy Hospital		535	-	-	-	-	-535
	Maji Mazuri Dispensary		297	-	-	-	-	-297
	Eldama Ravine District Hospital		1,962	-	-	-	-	-1,962
	Esageri Health Centre		437	-	-	-	-30	-407
	Equator Health Centre		340	-	-	-	-	-340
	Solian Dispensary		246	-	-	-	-5	-241
	Sigoro Dispensary		89	-	-	-	-	-89
	Muserechi Dispensary		100	-	-	-	-	-100
	Ngoron Dispensary		9	-	-	-	-	-9
	Loiwat Dispensary		13	-	-	-	-	-13
	Lodengo Health Centre		12	-	-	-	-	-12
	Barpello Dispensary		5	-	-	-	-	-5
	Kositei Dispensary		-	-	-	-	-	-

Vaccine	Facility	Receipts	Vaccinations Administered	Total Physical Count	Expired and Disposed	Damaged and Disposed	Wastage and Disposed	Unexplained Variance
	Kolowa Health Centre		26	-	-	-	-	-26
	Chemolingot District Hospital		73	-	-	-	-	-73
	Kabartonjo Referral Hospital		1,339	-	-	-	-	-1,339
	Barwessa Health Centre		490	-	-	-	-	-490
	Baringo County Referral Hospital		6,236	-	-	-	-	-6,236
	Tangulbei Sub County Hospital		27	-	-	-	-	-27
	Marigat Sub District Hospital		247	-	-	-	-	-247
	Mogotio Sub County Hospital		931	-	-	-	3	-934
	Eldama Ravine District Hospital		1,721	-	-	-	-	-1,721
	Chemolingot District Hospital		56	-	-	-	-	-56
	Kabartonjo Referral Hospital		276	-	-	-	-	-276
	Baringo County Referral Hospital		498	-	-	-	-	-498
	Talai Dispensary		83	-	-	-	-	-83
	Tinomoi Dispensary		-	-	-	-	-	-
	Sabor Dispensary		-	-	-	-	-	-
	Olarabel Dispensary		-	-	-	-	-	-
	Eldume Dispensary		-	-	-	-	-	-
	Mugurin Health Centre		44	-	-	-	-	-44
	Mogotio Sub County Hospital		154	-	-	-	-	-154
	Kipkitur Dispensary		35	-	-	-	42	-77
	Kamar Dispensary		-	-	-	-	-	-
	Baringo County Referral Hospital		922	-	-	-	-	-922

Vaccine	Facility	Receipts	Vaccinations Administered	Total Physical Count	Expired and Disposed	Damaged and Disposed	Wastage and Disposed	Unexplained Variance
	Marigat Sub District Hospital		-	-	-	-	-	-
	Mogotio Sub County Hospital		493	-	-	-	-5	-488
	Eldama Ravine District Hospital		781	-	-	-	-	-781
	Kabartonjo Referral Hospital		409	-	-	-	-	-409
	Baringo County Referral Hospital		1,094	-	-	-	-	-1,094
	Mogotio Sub County Hospital		218	-	-	-	42	-260
	Eldama Ravine District Hospital		79	-	-	-	-	-79
	Sandai Dispensary		3	-	-	-	-	-3
	Mochongoi Health Centre		648	-	-	-	-	-648
	Tinomoi Dispensary		69	-	-	-	-	-69
	Kokwa Dispensary		110	-	-	-	-	-110
	Kampi Samaki Health Centre		45	-	-	-	-	-45
	Illingarua Dispensary		112	-	-	-	-	-112
	Baringo County Referral Hospital		462	-	30	-	-	-492
	Talai Dispensary		48	-	-	-	-	-48
	Tinomoi Dispensary		18	-	-	-	-	-18
	Olarabel Dispensary		33	-	-	-	-	-33
	Mochongoi Health Centre		139	-	-	-	-	-139
	Marigat Sub District Hospital		1	-	-	-	-	-1
	Marigat Catholic Mission		-	-	-	-	-	-
	Kokwa Dispensary		1	-	-	-	-	-1
	Kimalel Health Centre		17	-	-	-	-	-17

Vaccine	Facility	Receipts	Vaccinations Administered	Total Physical Count	Expired and Disposed	Damaged and Disposed	Wastage and Disposed	Unexplained Variance
	Kampi Samaki Health Centre		31	-	-	-	-	-31
	Waseges Dispensary		5	-	-	-	22	-27
	Sore Dispensary		11	-	20	-	14	-45
	Sirwa Dispensary		117	-	-	-	-	-117
	Olkokwe Dispensary		129	-	-	-	-	-129
	Oldebes Dispensary		39	-	-	-	-	-39
	Ngubereti Health Centre		44	-	-	-	-	-44
	Cheberen Dispensary		158	-	-	-	-	-158
	Chemoinoi Dispensary		12	-	-	-	-	-12
	Molosirwe Dispensary		57	-	-	-	-	-57
	Mogotio Sub County Hospital		106	-	180	-	13	-299
	Emining Health Centre		155	-	-	-	-	-155
	Maji Moto Dispensary		101	-	-	-	-	-101
	Koitebes Dispensary		31	-	-	-	-	-31
	Kiptoim Dispensary		36	-	-	-	7	-43
	Kapkein Dispensary		-	-	-	-	9	-9
	Kamar Dispensary		202	-	-	-	-	-202
	Torongo Health Centre		60	-	170	-	-	-230
	Timboroa Health Centre		195	-	-	-	28	-223
	Saos Dispensary		140	-	-	-	-	-140
	Maji Mazuri Dispensary		-	-	-	-	-	-
	Eldama Ravine District Hospital		23	-	-	-	-	-23

Vaccine	Facility	Receipts	Vaccinations Administered	Total Physical Count	Expired and Disposed	Damaged and Disposed	Wastage and Disposed	Unexplained Variance
	Equator Health Centre		545	-	-	-	-3	-542
	Solian Dispensary		247	-	-	-	-1	-246
	Sigoro Dispensary		181	-	60	-	-	-241
	Muserechi Dispensary		8	-	-	-	-	-8
	Pnai Dispensary		-	-	-	-	-	-
	Kositei Dispensary		3	-	-	-	-	-3
	Tunoiwo Dispensary		289	-	-	-	-	-289
	Kuikui Healty Centre		208	-	-	-	-	-208
	Kabartonjo Referral Hospital		192	-	-	-	-	-192
	Barwessa Health Centre		294	-	-	-	-	-294
	Baringo County Referral Hospital		315	-	10	-	-	-325
	Talai Dispensary		2	-	-	-	-	-2
	Sore Dispensary		-	-	-	-	-	-
	Sirwa Dispensary		65	-	-	-	24	-89
	Sagasagik Dispensary		61	-	-	-	9	-70
	Rosoga Dispensary		5	-	10	-	-	-15
	Radat Dispensary		7	-	90	-	3	-100
	Ng'Endalel Dispensary		19	-	-	-	-	-19
	Mugurin Health Centre		24	-	-	-	-	-24
	Cheberen Dispensary		90	-	110	-	-	-200
	Molosirwe Dispensary		19	-	-	-	-	-19
	Molok Dispensary		-	-	-	-	-	-

Vaccine	Facility	Receipts	Vaccinations Administered	Total Physical Count	Expired and Disposed	Damaged and Disposed	Wastage and Disposed	Unexplained Variance
	Mogotio Sub County Hospital		100	-	-	-	30	-130
	Emining Health Centre		148	-	-	-	-	-148
	Maji Moto Dispensary		5	-	-	-	-	-5
	Kisanana Health Centre		7	-	-	-	50	-57
	Kiptoim Dispensary		169	-	80	-	11	-260
	Kipkitur Dispensary		38	-	-	-	63	-101
	Kapkein Dispensary		71	-	-	-	-	-71
	Arama Dispensary		-	-	-	-	-	-
	Saos Dispensary		89	-	70	-	-	-159
	Sagat Dispensary		39	-	120	-	41	-200
	Sabatia Dispensary		17	-	-	-	19	-36
	Maji Mazuri Dispensary		132	-	-	-	-	-132
	Kuikui Healty Centre		38	-	-	-	-	-38
	Baringo County Referral Hospital		324	-	20	-	-	-344
	Tangulbei Sub County Hospital		8	-	-	-	-	-8
	Marigat Sub District Hospital		8	-	-	-	-	-8
	Mogotio Sub County Hospital		188	-	-	-	18	-206
	Eldama Ravine District Hospital		612	-	-	-	-	-612
	Chemolingot District Hospital		6	-	-	-	-	-6
	Kabartonjo Referral Hospital		250	-	-	-	-	-250
	Baringo County Referral Hospital		1,501	-	30	-	-	-1,531
	Talai Dispensary		110	-	-	-	-	-110

Vaccine	Facility	Receipts	Vaccinations Administered	Total Physical Count	Expired and Disposed	Damaged and Disposed	Wastage and Disposed	Unexplained Variance
	Kerio Hospital		3	-	-	-	-	-3
	Tuiyobei Dispensary		94	-	-	-	-	-94
	Sandai Dispensary		45	-	-	-	-	-45
	Sabor Dispensary		19	-	-	-	-	-19
	Olarabel Dispensary		392	-	-	-	-	-392
	Mochongoi Health Centre		234	-	-	-	-	-234
	Bekibon Dispensary		-	-	-	-	-	-
	Marigat Sub District Hospital		347	-	-	-	-	-347
	Marigat Catholic Mission		29	-	-	-	-	-29
	Loboi Health Centre		136	-	-	-	-	-136
	Kokwa Dispensary		3	-	-	-	-	-3
	Eldume Dispensary		32	-	-	-	-	-32
	Kimalel Health Centre		188	-	-	-	-	-188
	Kampi Samaki Health Centre		46	-	-	-	-	-46
	Sirwa Dispensary		200	-	-	-	-	-200
	Ngubereti Health Centre		52	-	-	-	-	-52
	Mogotio Sub County Hospital		522	-	-	-	5	-527
	Emining Health Centre		93	-	-	-	-	-93
	Kisanana Health Centre		226	-	-	-	-	-226
	Torongu Health Centre		106	-	-	-	-	-106
	Timboroa Health Centre		366	-	40	-	-	-406
	Sitata Dispensary		34	-	-	-	-	-34

Vaccine	Facility	Receipts	Vaccinations Administered	Total Physical Count	Expired and Disposed	Damaged and Disposed	Wastage and Disposed	Unexplained Variance
	Saos Dispensary		72	-	-	-	1	-73
	Mercy Hospital		239	-	-	-	-	-239
	Maji Mazuri Dispensary		477	-	-	-	-	-477
	Eldama Ravine District Hospital		1,163	-	-	-	-	-1,163
	Esageri Health Centre		372	-	-	-	-	-372
	Equator Health Centre		199	-	-	-	-	-199
	Solian Dispensary		97	-	-	-	-3	-94
	Sigoro Dispensary		188	-	-	-	-	-188
	Muserechi Dispensary		144	-	-	-	-	-144
	Pnai Dispensary		7	-	-	-	-	-7
	Loiwat Dispensary		-	-	-	-	-	-
	Lodengo Health Centre		5	-	-	-	-	-5
	Barpello Dispensary		4	-	-	-	-	-4
	Kositei Dispensary		32	-	-	-	-	-32
	Kolowa Health Centre		19	-	-	-	-	-19
	Chemolingot District Hospital		40	-	-	-	-	-40
	Kabartonjo Referral Hospital		969	-	-	-	-	-969
	Chemura		13	-	-	-	-	-13
	Barwessa Health Centre		744	-	-	-	-	-744
	Talai Dispensary		3	-	-	-	-	-3
	Baringo County Referral Hospital		70	-	-	-	-	-70
	Marigat Sub District Hospital		9	-	-	-	-	-9

Vaccine	Facility	Receipts	Vaccinations Administered	Total Physical Count	Expired and Disposed	Damaged and Disposed	Wastage and Disposed	Unexplained Variance
	Kuikui Healty Centre		7	-	77	-	-	-84
	Kabartonjo Referral Hospital		45	-	-	-	-	-45
	Baringo County Referral Hospital		452	-	-	-	-	-452
	Kabartonjo Referral Hospital		108	-	-	-	-	-108
Oxford / AstraZeneca		57,710	63,761	-	5,077	-	516	-11,644
Pfizer	Baringo Central	58,200	1	-	5,142	-	-	53,057
	Baringo North	-	8	-	2,634	-	-	-2,642
	East Pokot	-	38	-	-	-	-	-38
	Koibatek	-	28	-	480	-	-	-508
	Marigat	-	-	-	1,400	-	-	-1,400
	Mogotio	-	-	-	2,280	-	-	-2,280
	Tiaty East	-	592	-	-	-	-	-592
	Baringo County Referral Hospital		2,162	-	-	-	-	-2,162
	Talai Dispensary		7	-	12	-	-	-19
	Mogotio Sub County Hospital		193	-	-	-	33	-226
	Emining Health Centre		2	-	-	-	-	-2
	Timboroa Health Centre		203	-	42	-	-	-245
	Saos Dispensary		104	-	-	-	6	-110
	Mercy Hospital		206	-	150	-	-	-356
	Eldama Ravine District Hospital		2,029	-	-	-	-	-2,029
	Esageri Health Centre		100	-	-	-	-60	-40
	Solian Dispensary		56	-	-	-	3	-59

Vaccine	Facility	Receipts	Vaccinations Administered	Total Physical Count	Expired and Disposed	Damaged and Disposed	Wastage and Disposed	Unexplained Variance
	Sigoro Dispensary		25	-	84	-	-	-109
	Muserechi Dispensary		31	-	-	-	-	-31
	Tuiyobei Dispensary		1,296	-	-	-	-	-1,296
	Mochongoi Health Centre		41	-	-	-	-	-41
	Meisori Dispensary		167	-	-	-	-	-167
	Marigat Sub District Hospital		184	-	-	-	-	-184
	Loboi Health Centre		75	90	-	-	-	-165
	Kokwa Dispensary		182	-	-	-	-	-182
	Kimalel Health Centre		73	-	-	-	-	-73
	Kasiela Dispensary		398	-	-	-	-	-398
	Waseges Dispensary		161	-	144	-	-	-305
	Olkokwe Dispensary		-	-	-	-	-	-
	Mogotio Catholic Dispensary		101	-	-	-	-	-101
	Mogotio Sub County Hospital		88	-	-	-	-	-88
	Emining Health Centre		160	-	-	-	-	-160
	Kisanana Health Centre		183	-	-	-	17	-200
	Torongu Health Centre		115	-	162	-	-	-277
	Timboroa Health Centre		63	-	-	-	-	-63
	Saos Dispensary		6	-	-	-	1	-7
	Solian Dispensary		458	-	-	-	-	-458
	Kuikui Healty Centre		9	-	428	-	-	-437
	Kabartonjo Referral Hospital		156	-	-	-	-	-156

Vaccine	Facility	Receipts	Vaccinations Administered	Total Physical Count	Expired and Disposed	Damaged and Disposed	Wastage and Disposed	Unexplained Variance
	Barwessa Health Centre		241	-	-	-	-	-241
	Talai Dispensary		105	-	60	-	-	-165
	Baringo County Referral Hospital		1,741	-	240	-	-	-1,981
	Tinomoi Dispensary		13	-	-	-	-	-13
	Mochongoi Health Centre		164	-	-	-	-	-164
	Bekibon Dispensary		21	-	-	-	-	-21
	Meisori Dispensary		1	-	-	-	-	-1
	Marigat Catholic Mission		-	-	-	-	-	-
	Loboi Health Centre		109	-	-	-	-	-109
	Kimalel Health Centre		555	-	-	-	-	-555
	Sore Dispensary		191	-	18	-	1	-210
	Sirwa Dispensary		493	-	-	-	-	-493
	Sagasagik Dispensary		1	-	-	-	-	-1
	Rosoga Dispensary		54	-	-	-	-	-54
	Radat Dispensary		97	-	6	-	-	-103
	Olkokwe Dispensary		113	-	276	-	-	-389
	Oldebes Dispensary		408	-	-	-	-	-408
	Ngubereti Health Centre		227	-	36	-	-	-263
	Mugurin Health Centre		118	-	-	-	-	-118
	Cheberen Dispensary		470	-	18	-	-	-488
	Chemoinoi Dispensary		53	-	-	-	-	-53
	Molosirwe Dispensary		204	-	-	-	-	-204

Vaccine	Facility	Receipts	Vaccinations Administered	Total Physical Count	Expired and Disposed	Damaged and Disposed	Wastage and Disposed	Unexplained Variance
	Molos Dispensary		21	-	-	-	-	-21
	Molok Dispensary		59	-	-	-	-	-59
	Mogotio Catholic Dispensary		341	-	30	-	-	-371
	Mogotio Sub County Hospital		559	-	-	-	78	-637
	Maji Moto Dispensary		91	-	-	-	-	-91
	Emining Health Centre		101	-	-	-	-	-101
	Koitebes Dispensary		68	-	-	-	-	-68
	Kisanana Health Centre		120	-	102	-	-	-222
	Kiptoim Dispensary		469	-	60	-	28	-557
	Kipsogon Dispensary		115	-	132	-	-	-247
	Kipkitur Dispensary		147	-	24	-	10	-181
	Kimose Dispensary		213	-	102	-	7	-322
	Kimngorom Dispensary		689	-	48	-	-	-737
	Kibotany Dispensary		58	-	-	-	-	-58
	Kamar Dispensary		10	-	12	-	-	-22
	Arama Dispensary		460	-	102	-	12	-574
	Torong Health Centre		32	-	-	-	-	-32
	Tinet Dispensary (Koibatek)		37	-	-	-	21	-58
	Timboroa Health Centre		411	-	264	-	27	-702
	Sitata Dispensary		30	-	-	-	-	-30
	Simotwet Dispensary (Koibatek)		17	-	48	-	-	-65
	Saos Dispensary		712	-	-	-	-	-712

Vaccine	Facility	Receipts	Vaccinations Administered	Total Physical Count	Expired and Disposed	Damaged and Disposed	Wastage and Disposed	Unexplained Variance
	Sagat Dispensary		272	-	234	-	-	-506
	Sabatia Dispensary		868	-	-	-	22	-890
	Maji Mazuri Dispensary		144	-	162	-	11	-317
	Kiptuno Dispensary		57	-	-	-	25	-82
	Kiplombe Dispensary (Koibatek)		72	-	150	-	30	-252
	Kabiyet Dispensary		92	-	84	-	-	-176
	Kabimoi Dispensary		33	-	120	-	15	-168
	Eldama Ravine (Aic) Health Centre		758	-	-	-	-	-758
	Eldama Ravine District Hospital		1,676	-	-	-	-	-1,676
	Esageri Health Centre		220	-	78	-	-	-298
	Equator Health Centre		313	-	-	-	2	-315
	Solian Dispensary		49	-	102	-	9	-160
	Sigoro Dispensary		439	-	-240	-	-	-199
	Muserechi Dispensary		43	-	-	-	-	-43
	Pnai Dispensary		45	-	-	-	-	-45
	Ngoron Dispensary		89	-	-	-	-	-89
	Loiwat Dispensary		18	-	-	-	-	-18
	Lodengo Health Centre		38	-	-	-	-	-38
	Barpello Dispensary		15	12	-	-	-	-27
	Kositei Dispensary		73	-	-	-	-	-73
	Kolowa Health Centre		125	102	-	-	-	-227
	Kapunyany Dispensary		47	-	-	-	-	-47

Vaccine	Facility	Receipts	Vaccinations Administered	Total Physical Count	Expired and Disposed	Damaged and Disposed	Wastage and Disposed	Unexplained Variance
	Chemolingot District Hospital		99	-	-	-	-	-99
	Kipcherere Dispensary		4	-	-	-	-	-4
	Kabartonjo Referral Hospital		181	-	24	-	-	-205
	Baringo County Referral Hospital		24	18	594	-	-	-636
Pfizer Total		58,200	25,634	222	15,844	-	298	16,202
Grand Total		183,000	144,717	4,599	22,476	5	970	10,233

Appendix 7- Disposal at Sub County Level- Baringo County

Sub County	D1	D2	D3	D4	D5	D6	D7
Baringo Central	Yes	No	No	No	No	No	No
Baringo North	Yes	No	No	No	No	No	No
East Pokot	Yes	No	No	No	No	No	No
Koibatek	Yes	No	No	No	No	Yes	Yes
Marigat	Yes	No	No	No	No	No	No
Mogotio	Yes	No	No	No	No	No	No
Tiaty East	Yes	No	No	No	No	No	No
Compliant	7	0	0	0	0	1	1
Non-Compliant	0	7	7	7	7	6	6

Key/Details:

D1	Was waste management plan developed at either the National and/or County level?
D2	Was there a budget developed for disposal of Covid-19 waste? (Compare actual with the budget and Report under observation if the budget was adequate or not)
D3	Did Covid-19 waste transported from one County to another have clearance from NEMA?
D4	Were disposed vaccine vials recorded and accounted for in the vaccine inventory report?
D5	Did the County/Store fill any application form for disposal of pharmaceutical waste issued by the Pharmacy and Poisons Board in compliance with the Guidelines for safe management of pharmaceutical waste?
D6	Are the disposals done at a NEMA approved pharmaceutical disposal site in compliance with the Guidelines for safe management of pharmaceutical waste
D7	Was disposal of pharmaceutical waste supervised by a Pharmacy and Poisons Board inspector OR Public Health Officer in compliance with the Guidelines for safe management of pharmaceutical waste?

Appendix 8 - Disposal at Facility Level - Baringo County

Sub County	Facility	DF1	DF2	DF3	DF4	DF5	DF6	DF7	DF8	DF9	DF10	DF11	DF12
Baringo Central	Baringo Central Referral Hospital	Yes	No	Yes	Yes	Yes	No	No	No	Yes	No	No	No
	Borowonin Dispensary	Yes	No	Yes	No	Yes	No	No	No	Yes	No	No	No
	Cheplambus dispensary	Yes	No	Yes	No	Yes	No	No	No	Yes	No	No	No
	Chesongo Dispensary	Yes	No	Yes	No	Yes	No	No	No	Yes	No	No	No
	Kapkelelwa Dispensary	Yes	No	Yes	No	Yes	No	No	No	Yes	No	No	No
	Kapkole Dispensary	Yes	No	Yes	No	Yes	No	No	No	Yes	No	No	No
	Kapkomoi Dispensary	Yes	No	Yes	Yes	Yes	No	No	No	Yes	No	No	No
	Kapkut Dispensary	Yes	No	Yes	No	Yes	No	No	No	Yes	No	No	No
	Kaptimbor Dispensary	Yes	No	Yes	No	Yes	No	No	No	Yes	No	No	No
	Kasoio Dispensary	Yes	No	Yes	No	Yes	No	No	No	Yes	No	No	No
	Kerio Dispensary	Yes	No	Yes	No	Yes	No	No	No	Yes	No	No	No
	Kiboio Dispensary	Yes	No	Yes	No	Yes	No	No	No	Yes	No	No	No
	Kipsacho Dispensary	Yes	No	Yes	No	Yes	No	No	No	Yes	No	No	No
	Kipsoit Dispensary	Yes	No	Yes	No	Yes	No	No	No	Yes	No	No	No
	Kiptagich Dispensary	Yes	No	Yes	No	Yes	No	No	No	Yes	No	No	No
	Kituro Health Centre	Yes	No	Yes	No	No	No	No	No	Yes	No	No	No
	Mogorwa Health Centre	Yes	No	Yes	No	Yes	No	No	No	Yes	No	No	No
	Ng'etmoi Dispensary	Yes	No	Yes	No	Yes	No	No	No	Yes	No	No	No
	Ochii Dispensary	Yes	No	Yes	No	Yes	No	No	No	Yes	No	No	No
	Orokwo Dispensary	Yes	No	Yes	No	Yes	No	No	No	Yes	No	No	No
Riwo Dispensary	Yes	No	Yes	No	Yes	No	No	No	Yes	No	No	No	
Sacho High Dispensary	Yes	No	Yes	No	Yes	No	No	No	Yes	No	No	No	
Salawa Health Centre	Yes	No	Yes	No	Yes	No	No	No	Yes	No	No	No	

Sub County	Facility	DF1	DF2	DF3	DF4	DF5	DF6	DF7	DF8	DF9	DF10	DF11	DF12
Baringo North	Salawa Primary Health Care	Yes	No	Yes	No	Yes	No	No	No	Yes	No	No	No
	Seretunin Dispensary	Yes	No	Yes	No	No	No	No	No	Yes	No	No	No
	Sorok Dispensary	Yes	No	Yes	No	Yes	No	No	No	Yes	No	No	No
	Talai Health Centre	Yes	No	Yes	No	Yes	No	No	No	Yes	No	No	No
	Tenges Health Centre	Yes	No	Yes	No	Yes	No	No	No	Yes	No	No	No
	Timboiywo Dispensary	Yes	No	Yes	No	Yes	No	No	No	Yes	No	No	No
	Baringo North Referral Hospital	Yes	No	Yes	Yes	Yes	Yes	No	No	Yes	No	No	No
	Bartabwa Dispensary	Yes	No	Yes	No	Yes	No	No	No	Yes	No	No	No
	Barwessa Health Centre	Yes	No	Yes	No	Yes	Yes	No	No	Yes	No	No	No
	Chemura	Yes	No	Yes	No	No	No	No	No	Yes	No	No	No
East Pokot	Kapluk Dispensary	Yes	No	Yes	No	No	No	No	No	No	No	No	No
	Kipcherere	Yes	No	Yes	No	No	No	No	No	Yes	No	No	No
	Kipsaram Dispensary	Yes	No	Yes	No	Yes	No	No	No	Yes	No	No	No
	Kuikui Health Centre	Yes	No	Yes	No	Yes	No	No	No	Yes	No	No	No
	Sibilo	Yes	No	Yes	No	No	No	No	No	No	No	No	No
	Tunoowo Dispensary	Yes	No	Yes	No	No	Yes	No	No	Yes	No	No	No
	Barpello Dispensary	Yes	No	Yes	No	Yes	No	No	No	Yes	No	No	No
	Chemolingot Sub CountyHospital	Yes	No	Yes	Yes	Yes	No	No	No	Yes	No	No	Yes
	Chepturu Dispensary	Yes	No	Yes	No	Yes	No	No	No	Yes	No	Yes	No
	Kapunyany Dispensary	Yes	No	Yes	No	Yes	No	No	No	Yes	No	Yes	No
Kipnai Dispensary	Yes	No	Yes	No	Yes	No	No	No	Yes	No	No	No	
Kolowa Health Centre	Yes	No	Yes	No	Yes	No	No	No	Yes	No	No	No	
Kositei Dispensary	Yes	No	Yes	No	Yes	No	No	No	Yes	No	No	Yes	
Lodengo Health Centre	Yes	No	Yes	No	Yes	No	No	No	Yes	No	No	Yes	

Sub County	Facility	DF1	DF2	DF3	DF4	DF5	DF6	DF7	DF8	DF9	DF10	DF11	DF12
Koibatek	Ngoron Dispensary	Yes	No	Yes	No	No	Yes	No	No	No	No	Yes	No
	Arama Dispensary	Yes	No	Yes	No	Yes	Yes	No	No	No	Yes	Yes	No
	Eldama Ravine AIC	Yes	No	Yes	No	Yes	Yes	No	No	No	Yes	Yes	No
	Eldama Ravine Referral Hospital	Yes	No	Yes	Yes	Yes	Yes	Yes	No	No	Yes	Yes	Yes
	Equator Health Centre	Yes	No	Yes	No	Yes	Yes	Yes	No	No	Yes	No	No
	Esageri Health Centre	Yes	No	Yes	No	Yes	No	No	No	No	Yes	No	No
	Igure Dispensary	Yes	No	Yes	No	Yes	Yes	Yes	No	No	Yes	Yes	No
	Kabimoi Dispensary	Yes	No	Yes	No	No	Yes	No	No	No	No	No	No
	Kabiyet Dispensary	Yes	No	Yes	No	Yes	No	No	No	No	Yes	No	No
	Kapchoi Dispensary	Yes	No	Yes	No	Yes	Yes	Yes	Yes	No	Yes	Yes	No
	Kiplombe Dispensary	Yes	No	Yes	No	Yes	Yes	Yes	Yes	No	Yes	Yes	No
	Maji Mazuri Dispensary	Yes	No	Yes	No	Yes	No	No	No	No	Yes	No	Yes
	Mercy Mission Hospital	Yes	No	Yes	No	Yes	No	No	No	No	Yes	No	No
	Muserechi Dispensary	Yes	No	Yes	No	Yes	No	No	No	No	Yes	No	No
	Nakurtakwei Dispensary	Yes	No	Yes	No	Yes	Yes	Yes	Yes	No	Yes	Yes	No
	Sabatia Dispensary	Yes	No	Yes	No	No	No	No	No	No	No	No	No
	Sagat Dispensary	Yes	No	Yes	No	Yes	No	No	Yes	No	Yes	Yes	No
	Saos Dispensary	Yes	No	Yes	No	Yes	Yes	Yes	Yes	No	Yes	Yes	Yes
	Sigoro Dispensary	Yes	No	Yes	No	Yes	Yes	Yes	Yes	No	Yes	Yes	No
	Simotwet Dispensary	Yes	No	Yes	No	Yes	Yes	Yes	Yes	No	Yes	Yes	No
Solian Health Centre	Yes	No	Yes	No	Yes	No	No	No	No	Yes	No	Yes	
Timboroa Health Centre	Yes	No	Yes	No	Yes	No	No	No	No	Yes	No	No	
Torongo Health Centre	Yes	No	Yes	No	Yes	No	No	Yes	No	Yes	Yes	No	
Tugumoi Dispensary	Yes	No	Yes	No	Yes	Yes	Yes	Yes	No	Yes	Yes	No	

Sub County	Facility	DF1	DF2	DF3	DF4	DF5	DF6	DF7	DF8	DF9	DF10	DF11	DF12
Marigat	Bekibon Dispensary	Yes	No	Yes	No	No	No	No	No	No	No	No	No
	Eldume Dispensary	Yes	No	Yes	No	Yes	No	No	No	Yes	No	No	No
	Kampi ya samaki	Yes	No	Yes	No	Yes	No	No	No	Yes	No	No	No
	Kimalel Health Centre	Yes	No	Yes	Yes	Yes	No	Yes	No	No	No	Yes	No
	Kokwa Dispensary	Yes	No	Yes	No	No	No	No	No	Yes	No	No	No
	Loboi	Yes	No	Yes	Yes	Yes	No	No	No	Yes	No	No	No
	Marigat Sub County Hospital	Yes	No	Yes	No	Yes	No	No	No	Yes	No	No	No
	Marigat Mission Hospital	Yes	No	Yes	No	No	No	No	No	No	No	No	No
	Mochongoi Health Centre	Yes	No	Yes	Yes	Yes	No	No	No	Yes	Yes	Yes	No
	Olarabel Dispensary	Yes	No	Yes	No	Yes	No	No	No	Yes	No	No	No
	Sabor Dispensary	Yes	No	Yes	No	Yes	No	No	No	Yes	No	No	No
	Sandai Dispensary	Yes	No	Yes	No	Yes	No	No	No	Yes	No	No	No
	Tinomoi Dispensary	Yes	No	Yes	No	Yes	No	No	No	Yes	No	No	No
	Tuiyobei Dispensary	Yes	No	Yes	No	Yes	No	No	No	Yes	No	No	No
Mogotio	Cheberen Health Centre	Yes	No	Yes	No	Yes	Yes	No	No	Yes	No	No	No
	Chemoinoi Dispensary	Yes	No	Yes	No	No	No	No	No	Yes	Yes	No	No
	Emining Health Centre	Yes	No	Yes	No	Yes	No	No	No	Yes	No	No	No
	Emsos Dispensary	Yes	No	Yes	No	No	Yes	No	No	Yes	Yes	No	No
	Kabogor Dispensary	Yes	No	Yes	No	Yes	Yes	No	No	Yes	No	Yes	Yes
	Kamar Dispensary	Yes	No	Yes	No	Yes	No	No	No	Yes	No	No	No
	Kapkein Dispensary	Yes	No	Yes	No	Yes	No	No	No	Yes	Yes	No	No
	Kibotany Dispensary	Yes	No	Yes	No	Yes	Yes	No	No	No	No	Yes	Yes
	Kimng'orom Dispensary	Yes	No	Yes	No	Yes	Yes	Yes	No	No	Yes	Yes	No
	Kimose Dispensary	Yes	No	Yes	No	Yes	No	No	No	Yes	No	No	No

Sub County	Facility	DF1	DF2	DF3	DF4	DF5	DF6	DF7	DF8	DF9	DF10	DF11	DF12
Tiaty East	Kipkitur Dispensary	Yes	No	Yes	No	Yes	No	Yes	No	No	No	No	Yes
	Kipsogon Dispensary	Yes	No	Yes	No	Yes	No	Yes	No	No	No	No	No
	Kiptoim Dispensary	Yes	No	Yes	No	Yes	No	Yes	No	No	No	No	No
	Kiptuno Dispensary	Yes	No	Yes	No	Yes	No	Yes	No	No	No	No	No
	Kisanana Health Centre	Yes	No	Yes	No	Yes	No	Yes	No	No	No	No	No
	Koitibes Dispensary	Yes	No	Yes	No	Yes	No	Yes	No	No	No	No	No
	Maji Moto Dispensary	Yes	No	Yes	No	Yes	No	Yes	No	No	No	No	No
	Mogotio Catholic Mission Hospital	Yes	No	Yes	No	Yes	No	Yes	No	No	No	No	No
	Mogotio Sub County Hospital Baringo	Yes	No	Yes	Yes	Yes	No	Yes	No	No	No	Yes	No
	Molok Dispensary	Yes	No	Yes	No	Yes	Yes	Yes	Yes	No	No	Yes	Yes
	Molos Dispensary	Yes	No	Yes	No	Yes	No	No	No	No	No	No	No
	Molosirwe Dispensary	Yes	No	Yes	No	Yes	No	No	No	No	No	No	No
	Mugurin Dispensary	Yes	No	Yes	No	Yes	No	No	No	No	No	No	Yes
	Ngendael Dispensary	Yes	No	Yes	No	No	No	No	No	No	No	No	No
	Ngubereiti Health Centre	Yes	No	Yes	No	Yes	No	Yes	No	No	No	Yes	No
	Oldebes Dispensary	Yes	No	Yes	No	No	No	No	No	No	No	Yes	No
	Olkokwe Health Centre	Yes	No	Yes	No	No	Yes	No	No	No	No	Yes	Yes
	Oterit Dispensary	Yes	No	Yes	No	No	No	No	No	No	No	No	No
	Radat Dispensary	Yes	No	Yes	No	Yes	No	No	No	No	No	No	No
	Rosoga Dispensary	Yes	No	Yes	No	Yes	No	No	No	No	No	No	Yes
Sagasagik Dispensary	Yes	No	Yes	No	Yes	Yes	No	No	No	No	No	Yes	
Sirwa Dispensary	Yes	No	Yes	No	Yes	No	No	No	No	No	Yes	No	
Sore Dispensary	Yes	No	Yes	No	Yes	No	No	No	No	No	Yes	No	
Tinet Dispensary	Yes	No	Yes	No	Yes	No	No	No	No	No	Yes	No	

Sub County	Facility	DF1	DF2	DF3	DF4	DF5	DF6	DF7	DF8	DF9	DF10	DF11	DF12
	Waseges Dispensary	Yes	No	Yes	No	No	No	No	No	Yes	No	No	No
	Tangulbei Sub CountyHospital	Yes	No	Yes	No	Yes	No	No	No	Yes	No	No	No
	Tangulbei Mission Hospital	Yes	No	Yes	No	No	No	No	No	Yes	No	No	No
Compliant		122	0	122	9	95	25	13	0	109	24	17	15
Non-Compliant		0	122	0	113	27	97	109	122	13	98	105	107

Key/Details:

D1	Does the facility have a waste management plan?
D2	Was there a budget for the disposal of Covid-19 Waste?
D3	Was there pharmaceutical waste separated from the sharp waste and other healthcare wastes and the different wastes securely packaged in plastic bags or rigid containers which are clearly labeled?
D4	Was there pharmaceutical waste stored in designated quarantine stores and away from usable pharmaceutical? (Applicable to facilities with large volumes of daily waste, that do not transport/dispose daily)
D5	Is the public health officer involved in the disposal of Covid-19 Waste? (Storage, Transportation and Supervision of Disposal)
D6	Does the Facility Transport Pharmaceutical Waste? (For facilities that do not have a NEMA approved Waste Disposal Site. These sites have an incinerator. N/B: A burning chamber is not an incinerator)
D7	Was there pharmaceutical waste is transported to a NEMA approved Waste Disposal Site. (Facility should have a copy for the approval of the site/incinerator and a separate documentation regarding approval for the transportation)
D8	Was there a pharmaceutical waste transported from one County to another had clearance from NEMA
D9	Does the facility have an incinerator, burning chamber or burning pit?
D10	Was the method used to dispose of sharp waste (syringes and needles) by the Healthcare facility and whether complying with the Guidelines for safe management of pharmaceutical waste and WHO Waste management of used Covid-19 vaccines vials and ancillary supply (Treatment should be by Incineration, Sharps are to be incinerated while other waste is to be burnt in a burning chamber)
D11	Did the quantity and the method used in the disposal of any vaccine vials (both wasted and expired) by the Healthcare facility comply with the Guidelines for safe management of pharmaceutical waste and WHO Waste management of used Covid-19 vaccines vials and ancillary supply? (requirement is Treatment by disinfection with solution, encapsulation, autoclaving or inertization)
D12	Were the disposed vaccine vials recorded and accounted for in the vaccine inventory report?

Appendix: 9 Human Resource Sub County Level- Baringo County

Sub County	HR1	HR2	HR3	HR4	HR5	HR6	HR7
Baringo Central	Yes	Yes	Yes	Yes	Yes	No	Yes
Baringo North	Yes	Yes	Yes	Yes	No	No	No
East Pokot	Yes	Yes	Yes	Yes	No	No	Yes
Koibatek	Yes	Yes	Yes	Yes	No	No	Yes
Marigat	Yes	Yes	Yes	Yes	Yes	No	No
Mogotio	Yes	Yes	Yes	Yes	No	No	Yes
Tiaty East	Yes	Yes	Yes	Yes	No	No	Yes
Compliant	7	7	7	7	2	0	5
Non-Compliant	0	0	0	0	5	7	2

Key/Details:

HR1	Was the County represented in National training for ToTs? If ☐ indicate in the remarks column number of people involved
HR2	Were the Sub County health management team trained on Covid-19 immunization?
HR3	Was the training well spread to all cadres supposed to be trained? Establish the composition of the Sub County health management team trained and what was covered in the training
HR4	Was there a training plan and were the trainings done as per training plan?
HR5	Was there a specific training budget for covid -19 immunization?
HR6	Does comparison of Expenditure with actual expenditure for training on Covid-19 vaccination give rise to a variance?
HR7	Did you Obtain details of staff at national/County /Sub County/facility for the following Categories indicating their designation, attendance dates, Financier, etc.?

Appendix 10: Human Resources at Facility Level- Baringo County

Sub County	Facility	HR1	HR2	HR3	HR4	HR5	HR6	HRF7	HRF8
Baringo Central	Baringo Central Referral Hospital	No	Yes	Yes	Yes	No	Yes	Yes	Yes
	Borowonin Dispensary	Yes	Yes	Yes	Yes	Yes	Yes	Yes	No
	Cheplambus Dispensary	Yes	Yes	Yes	Yes	Yes	Yes	Yes	Yes
	Chesongo Dispensary	No	Yes	Yes	Yes	Yes	Yes	Yes	Yes
	Kapkelelwa Dispensary	No	Yes	Yes	Yes	Yes	Yes	Yes	Yes
	Kapkole Dispensary	Yes	Yes	Yes	Yes	Yes	Yes	Yes	No
	Kapkomoi Dispensary	Yes	Yes	Yes	Yes	Yes	Yes	Yes	Yes
	Kaptimbor Dispensary	Yes	Yes	Yes	Yes	Yes	Yes	Yes	Yes
	Kasooyo Dispensary	Yes	Yes	Yes	Yes	Yes	Yes	Yes	No
	Kerio Hospital	No	No	Yes	Yes	No	No	No	Yes
	Kiboino Dispensary	No	Yes	Yes	Yes	Yes	Yes	Yes	Yes
	Kipsacho Dispensary	Yes	Yes	Yes	Yes	Yes	Yes	Yes	No
	Kipsoit Dispensary	No	Yes	Yes	Yes	Yes	Yes	Yes	Yes
	Kiptagich Dispensary	Yes	Yes	Yes	Yes	Yes	Yes	Yes	Yes
	Kituro Health Centre	Yes	No	Yes	Yes	No	No	No	No
	Mogorwa Health Centre	No	Yes	Yes	Yes	Yes	Yes	Yes	No
	Ng'etmoi Dispensary	Yes	Yes	Yes	Yes	Yes	Yes	Yes	No
	Ochii Dispensary	Yes	Yes	Yes	Yes	Yes	Yes	Yes	Yes
	Orokwo Dispensary	Yes	Yes	Yes	Yes	Yes	Yes	Yes	No
	Riwo Dispensary	Yes	No	Yes	Yes	No	No	No	No
	Sacho High Dispensary	No	Yes	Yes	Yes	Yes	Yes	Yes	No
	Salawa Health Centre	No	Yes	Yes	Yes	Yes	Yes	Yes	Yes
	Salawa Primary Health Care	Yes	Yes	Yes	No	Yes	Yes	No	Yes
	Serutinini	Yes	Yes	Yes	Yes	No	No	No	Yes

Sub County	Facility	HR1	HR2	HR3	HR4	HR5	HR6	HRF7	HRF8
	Sorok Dispensary	No	Yes	Yes	Yes	Yes	Yes	Yes	No
	Talai Health Centre	Yes	No	Yes	Yes	No	No	Yes	Yes
	Tenges Health Centre	Yes	Yes	Yes	Yes	Yes	Yes	Yes	No
	Timboiywo Dispensary	Yes	Yes	Yes	Yes	Yes	Yes	Yes	No
	Tinmoi Dispensary	No	No	Yes	No	Yes	No	Yes	Yes
Baringo North	Baringo North Referral Hospital	No	Yes	Yes	Yes	No	No	No	Yes
	Barwessa Health Centre	Yes	Yes	Yes	Yes	No	No	No	No
	Chemura	No	No	No	Yes	No	No	No	No
	Kabimoi Dispensary	No	Yes	Yes	Yes	No	No	No	Yes
	Kapluk Dispensary	Yes	Yes	Yes	Yes	Yes	Yes	Yes	Yes
	Kipcherere Dispensary	No	Yes	Yes	Yes	No	No	No	Yes
	Kipsaraman dispensary	No	Yes	Yes	Yes	No	No	No	Yes
	Kuikui Health Centre	No	Yes	Yes	Yes	No	No	No	No
	Sibilo Dispensary	No	Yes	Yes	Yes	No	No	No	No
	Sigoro Dispensary	No	Yes	Yes	Yes	No	No	No	No
	Tunoiwwo Dispensary	No	No	Yes	Yes	No	No	No	Yes
Baringo North Referral Hospital	Bartabwa Dispensary	Yes	Yes	Yes	Yes	Yes	Yes	No	Yes
East Pokot	Barpello Dispensary	Yes	Yes	Yes	Yes	Yes	Yes	No	Yes
	Chemolingot Sub County Hospital	No	No	Yes	Yes	Yes	Yes	Yes	Yes
	Chepturu Dispensary	No	No	Yes	Yes	No	No	No	No
	Kipnai Dispensary	No	No	Yes	Yes	No	No	No	No
	Kolowa Health Centre	Yes	No	Yes	Yes	No	No	No	No
	Kapunyany Dispensary	No	No	Yes	Yes	No	No	No	No
	Kositei Dispensary	No	No	Yes	Yes	No	No	No	No
	Lodengo Health Centre	Yes	Yes	Yes	Yes	Yes	Yes	No	Yes

Sub County	Facility	HR1	HR2	HR3	HR4	HR5	HR6	HR7	HRF8
Koibatek	Ngoron Dispensary	No	No	Yes	Yes	No	No	No	No
	Arama Dispensary	No	No	Yes	Yes	No	No	No	No
	Eldama Ravine AIC	No	No	Yes	Yes	No	No	No	No
	Eldama Ravine Referral Hospital	No	Yes	Yes	Yes	No	No	No	Yes
	Equator Health Centre	No	Yes	Yes	Yes	No	No	No	No
	Esageri Health Centre	No	Yes	Yes	Yes	No	No	No	Yes
	Igure Dispensary	No	Yes	Yes	Yes	No	No	No	No
	Kabiyet Dispensary	No	Yes	Yes	Yes	No	No	No	No
	Kabogor Dispensary	Yes	Yes	Yes	Yes	No	No	No	Yes
	Kapcholoi Dispensary	No	No	Yes	Yes	No	No	No	Yes
	Kiplombe Dispensary	No	No	Yes	Yes	No	No	No	No
	Maji Mazuri Dispensary	No	Yes	Yes	Yes	No	No	No	Yes
	Mercy Mission Hospital	No	No	Yes	Yes	No	No	No	No
	Nakurtakwei Dispensary	No	No	Yes	Yes	No	No	No	Yes
	Saos Dispensary	Yes	Yes	Yes	Yes	No	No	No	No
	Simotwet Dispensary	No	Yes	Yes	Yes	No	No	No	No
Marigat	Sirwa Dispensary	No	No	Yes	Yes	No	No	No	Yes
	Sore Dispensary	No	No	Yes	Yes	No	No	No	No
	Timboroa Health Centre	No	Yes	Yes	Yes	No	No	No	Yes
	Tinet Dispensary	No	Yes	Yes	Yes	No	No	No	No
	Torongo Health Centre	No	Yes	Yes	Yes	No	No	No	No
	Tugumoi Dispensary	No	No	Yes	Yes	No	No	No	No
	Bekibon Dispensary	No	No	Yes	No	Yes	No	Yes	No
	Eldume Dispensary	No	No	Yes	No	Yes	Yes	Yes	Yes
	Kampi ya samaki	No	Yes	Yes	Yes	Yes	No	No	No
	Kapkuikui Dispensary	Yes	Yes	Yes	Yes	Yes	Yes	Yes	Yes

Sub County	Facility	HR1	HR2	HR3	HR4	HR5	HR6	HRF7	HRF8
	Kimalel Health Centre	No	No	Yes	No	Yes	No	Yes	Yes
	Kokwa Dispensary	No	No	Yes	Yes	No	No	No	No
	Loboi Dispensary	No	No	Yes	No	Yes	No	Yes	Yes
	Marigat Catholic Mission	No	Yes	Yes	No	Yes	Yes	No	Yes
	Marigat Sub County Hospital	Yes	Yes	Yes	Yes	Yes	Yes	Yes	Yes
	Mochongoi H/C	Yes	No	Yes	Yes	Yes	No	No	No
	Olarabel Dispensary	No	No	Yes	Yes	Yes	No	No	No
	Sabor Dispensary	No	Yes	Yes	Yes	Yes	Yes	Yes	Yes
	Sandai Dispensary	No	No	Yes	No	Yes	Yes	Yes	Yes
	Tuiyobei Dispensary	No	No	Yes	Yes	Yes	No	No	No
Mogotio	Cheberen Health Centre	Yes	Yes	Yes	Yes	Yes	Yes	No	Yes
	Chemoimoi Dispensary	No	Yes	Yes	Yes	Yes	No	Yes	Yes
	Emining Health Centre	No	Yes	No	Yes	Yes	Yes	Yes	No
	Emsos Dispensary	No	No	No	No	No	No	No	No
	Kamar Dispensary	No	Yes	Yes	Yes	Yes	No	No	No
	Kapkein Dispensary	No	No	Yes	Yes	Yes	No	No	Yes
	Kibotany Dispensary	No	No	Yes	Yes	Yes	No	No	No
	Kimng'orom Dispensary	No	Yes	Yes	Yes	Yes	No	No	No
	Kimose Dispensary	No	No	Yes	Yes	Yes	No	No	Yes
	Kipkitur Dispensary	No	Yes	Yes	Yes	Yes	No	No	No
	Kipsogon Dispensary	No	Yes	Yes	Yes	Yes	No	No	No
	Kiptoim Dispensary	No	Yes	Yes	Yes	Yes	No	No	No
	Kiptuno Dispensary	No	Yes	Yes	Yes	Yes	No	No	No
	Kisanana Health Centre	No	Yes	Yes	Yes	Yes	No	No	Yes
	Kotebes Dispensary	No	Yes	Yes	Yes	Yes	No	No	No
	Maji Moto Dispensary	No	Yes	Yes	Yes	Yes	No	No	No

Sub County	Facility	HR1	HR2	HR3	HR4	HR5	HR6	HR7	HR8
	Mogotio Catholic Mission Hospital	Yes	Yes	Yes	Yes	No	No	No	Yes
	Mogotio Sub County Hospital	Yes	Yes	Yes	Yes	No	No	No	Yes
	Mogotio Sub County Hospital	Yes	Yes	Yes	Yes	Yes	Yes	Yes	Yes
	Molos Dispensary	No	No	Yes	Yes	No	No	No	Yes
	Molosirwe Dispensary	No	No	Yes	Yes	No	No	No	Yes
	Mugurin Dispensary	No	Yes	Yes	Yes	No	No	No	No
	Muserochi Dispensary	No	Yes	Yes	Yes	No	No	No	Yes
	Ngendaeli Dispensary	No	No	Yes	Yes	No	No	No	No
	Ngubereiti Health Centre	Yes	Yes	Yes	Yes	Yes	Yes	Yes	Yes
	Oldebes Dispensary	No	No	Yes	Yes	No	No	No	No
	Olkokwe Health Centre	Yes	Yes	Yes	Yes	No	No	No	Yes
	Oterit Dispensary	No	Yes	Yes	Yes	Yes	No	No	No
	Radat Dispensary	No	Yes	Yes	Yes	No	No	No	Yes
	Rosoga Dispensary	Yes	Yes	Yes	Yes	Yes	Yes	Yes	Yes
	Sabatia Dispensary	Yes	Yes	Yes	Yes	Yes	Yes	Yes	Yes
	Sagasagik Dispensary	Yes	Yes	Yes	Yes	No	No	No	Yes
	Sagat Dispensary	No	Yes	Yes	Yes	No	No	No	Yes
	Solian Health Centre	Yes	Yes	Yes	Yes	Yes	Yes	No	Yes
	Waseges Dispensary	Yes	Yes	Yes	Yes	No	No	No	Yes
	Tangulbei Mission Hospital	Yes	Yes	Yes	Yes	Yes	Yes	No	Yes
	Tangulbei Sub County Hospital	No	No	Yes	Yes	Yes	Yes	Yes	Yes
Compliant		41	81	119	113	48	42	39	64
Non-Compliant		81	41	3	9	74	80	83	58

Key/Details:

HR1	Did the facility have adequate staff to carry out the Covid-19 vaccination (See guide from 5.1 below)
HR2	Did these staff have separation of roles and if not, was the staff trained to handle other roles? (See guide from 5.1 below)
HR3	Were health Care Workers (HCW) trained before commencement of Covid-19 Vaccination at the facility? (HCW should be trained before being issued with vaccines. Compare date of training with the date the first doze of vaccine was received)
HR4	Were the health care workers trained on vaccine administration (i.e. what was covered in the training)?
	Have you obtained the details of the facility's staff (involved in Covid-19 vaccination) as follows
HR5	Vaccinator
HR6	Health Records Management
HR7	Sanitation of Storage Area
HR8	Has any staff of the facility been used in training other staff? I.e. CHV with Job Description of Trained on Mobilization, Awareness creation

Appendix 11: Coordination of Players at County Level – Baringo County

County	CP1	CP2	CP3	CP4	CP5	CP6	CP7	CP8	CP9
Baringo County	Yes	Yes	Yes	Yes	Yes	Yes	Yes	Yes	Yes
Compliant	1	1	1	1	1	1	1	1	1
Non-Compliant	0	0	0	0	0	0	0	0	0

Key/Details:

CP1	Was a coordination taskforce/committee at the County and Sub County formed?
CP2	Did the task force /committee have terms of reference?
CP3	Were the tors executed?
CP4	Did the County receive any directives/advisory/instruction from the national government in relation to covid-19 vaccination?
CP5	Did the County /Sub County taskforce communicate to the National Task force?
CP6	Did the committee/task force keep minutes of their meetings?
CP7	Did the County /Sub County carry out any advocacy?
CP8	Did the County /Sub County carried out mobilization?
CP9	Did the County /Sub County carry out any outreaches?

Appendix: 12 - Coordination of Players Sub County- Baringo County

Sub County	CP1	CP2	CP3	CP4	CP5	CP6	CP7	CP8	CP9
Baringo Central	Yes	Yes	No	Yes	Yes	Yes	Yes	Yes	Yes
Baringo North	No	No	No	Yes	No	No	No	Yes	Yes
East Pokot	No	No	No	Yes	No	No	No	Yes	Yes
Koibatek	No	No	No	Yes	No	No	No	Yes	Yes
Marigat	No	No	No	Yes	No	No	No	Yes	Yes
Mogotio	No	No	No	Yes	No	No	No	Yes	Yes
Tiaty East	No	No	No	Yes	No	No	No	Yes	Yes
Compliant	1	1	0	7	1	1	1	7	7
Non-Compliant	6	6	7	0	6	6	6	0	0

Key/Detail:

CP1	Was a coordination taskforce/committee at the sub-County formed?
CP2	Did the task force /committee have terms of reference?
CP3	Were the tors executed?
CP4	Did the County receive any directives/advisory/instruction from the national government in relation to covid-19 vaccination?
CP5	Did the County /subCounty taskforce communicate to the National Task force?
CP6	Did the committee/task force keep minutes of their meetings? Review the minutes of the different committees and note whether resolutions were implemented and any gaps in coordination (Populate the findings in the remarks column)
CP7	Did the County /subCounty carry out any advocacy?
CP8	Did the County /subCounty carried out mobilization?

Appendix: 13 Coordination of Key Players at Facility Level- Baringo County

Sub County	Facility	CP 1	CP 2	CP 3	CP 4	CP 5
Baringo Central	Baringo Central Referral Hospital	No	Yes	Yes	Yes	Yes
	Borwonin Dispensary	No	Yes	Yes	Yes	No
	Cheplambus dispensary	No	Yes	Yes	Yes	Yes
	chesongo dispensary	No	Yes	Yes	Yes	Yes
	Kapkut Dispensary	No	Yes	Yes	Yes	Yes
	Kaptimbor Dispensary	No	Yes	Yes	Yes	Yes
	Kapunyany Dispensary	No	Yes	Yes	Yes	Yes
	Kerio hospital	Yes	Yes	Yes	No	No
	Kibotany Dispensary	No	Yes	Yes	Yes	No
	Kimalel Health Centre	No	Yes	Yes	Yes	Yes
	Kimose Dispensary	No	Yes	No	Yes	Yes
	Kipcherere	No	Yes	No	Yes	Yes
	Kipsaraman Dispensary	No	Yes	No	No	Yes
	Kiptagich Dispensary	No	Yes	Yes	Yes	Yes
	Kiptoim Dispensary	No	Yes	Yes	Yes	Yes
	Kituro Health Centre	No	Yes	Yes	Yes	Yes
	Mogotio Sub County Hospital Baringo	No	Yes	Yes	Yes	Yes
	ngubereti Health Centre	No	Yes	Yes	Yes	Yes
	Oldebes Dispensary	No	Yes	No	Yes	Yes
	Radat Dispensary	No	Yes	No	Yes	Yes
	Sabatia Dispensary	No	Yes	Yes	Yes	Yes
	Sagat Dispensary	No	Yes	Yes	Yes	Yes
	Sandai Dispensary	No	Yes	Yes	Yes	Yes
Saos Dispensary	No	Yes	Yes	Yes	Yes	
Sibilo Dispensary	Yes	Yes	Yes	No	Yes	
Sorok Dispensary	No	Yes	Yes	Yes	No	
Talai Health Centre	No	Yes	Yes	Yes	Yes	
Tenges Health Centre	No	Yes	Yes	Yes	Yes	

Sub County	Facility	CP 1	CP 2	CP 3	CP 4	CP 5
Baringo North	Timboiywo Dispensary	No	Yes	Yes	Yes	No
	Tunoiowo Dispensary	No	No	Yes	Yes	Yes
	Baringo North Referral Hospital	No	Yes	Yes	Yes	Yes
	Barwessa Health Centre	No	Yes	Yes	Yes	Yes
	Chemura	No	Yes	No	No	Yes
	Kabiyet Dispensary	No	Yes	No	No	Yes
	Kapluk Dispensary	No	Yes	Yes	Yes	Yes
	Kiboio Dispensary	No	Yes	Yes	Yes	Yes
	Kipsogon Dispensary	No	Yes	Yes	Yes	Yes
	Kuikui Health Centre	No	Yes	Yes	Yes	Yes
	Sigoro Dispensary	No	Yes	Yes	Yes	Yes
	Barpello Dispensary	No	Yes	Yes	Yes	Yes
	Chemolingot Sub County Hospital	No	Yes	Yes	Yes	Yes
	Chepturu Dispensary	No	Yes	Yes	Yes	Yes
East Pokot	Kapchholoi Dispensary	No	Yes	Yes	Yes	Yes
	Kipnai Dispensary	No	Yes	Yes	Yes	Yes
	Kolowa Health Center	No	Yes	Yes	Yes	Yes
	Kositei Dispensary	No	Yes	Yes	Yes	Yes
	Lodengo Health Centre	No	Yes	Yes	Yes	Yes
	Maji Mazuri Dispensary	No	Yes	Yes	Yes	Yes
	Ochii Dispensary	No	Yes	Yes	Yes	Yes
	Arama Dispensary	No	Yes	Yes	Yes	Yes
	Eidama Ravine AIC	No	Yes	Yes	Yes	Yes
	Eidama Ravine Referral Hospital	No	Yes	Yes	Yes	Yes
	Equator Health Centre	No	Yes	No	No	Yes
	Esageri Health Centre	No	Yes	Yes	Yes	Yes
	Igure Dispensary	No	Yes	Yes	Yes	Yes
	Kabogor Dispensary	No	Yes	Yes	Yes	No
Kamar Dispensary	No	Yes	Yes	Yes	Yes	
Koibatek	Timboiywo Dispensary	No	Yes	Yes	Yes	No
	Tunoiowo Dispensary	No	No	Yes	Yes	Yes
	Baringo North Referral Hospital	No	Yes	Yes	Yes	Yes
	Barwessa Health Centre	No	Yes	Yes	Yes	Yes
	Chemura	No	Yes	No	No	Yes
	Kabiyet Dispensary	No	Yes	No	No	Yes
	Kapluk Dispensary	No	Yes	Yes	Yes	Yes
	Kiboio Dispensary	No	Yes	Yes	Yes	Yes
	Kipsogon Dispensary	No	Yes	Yes	Yes	Yes
	Kuikui Health Centre	No	Yes	Yes	Yes	Yes
	Sigoro Dispensary	No	Yes	Yes	Yes	Yes
	Barpello Dispensary	No	Yes	Yes	Yes	Yes
	Chemolingot Sub County Hospital	No	Yes	Yes	Yes	Yes
	Chepturu Dispensary	No	Yes	Yes	Yes	Yes
Kapchholoi Dispensary	No	Yes	Yes	Yes	Yes	
Kipnai Dispensary	No	Yes	Yes	Yes	Yes	
Kolowa Health Center	No	Yes	Yes	Yes	Yes	
Kositei Dispensary	No	Yes	Yes	Yes	Yes	
Lodengo Health Centre	No	Yes	Yes	Yes	Yes	
Maji Mazuri Dispensary	No	Yes	Yes	Yes	Yes	
Ochii Dispensary	No	Yes	Yes	Yes	Yes	
Arama Dispensary	No	Yes	Yes	Yes	Yes	
Eidama Ravine AIC	No	Yes	Yes	Yes	Yes	
Eidama Ravine Referral Hospital	No	Yes	Yes	Yes	Yes	
Equator Health Centre	No	Yes	No	No	Yes	
Esageri Health Centre	No	Yes	Yes	Yes	Yes	
Igure Dispensary	No	Yes	Yes	Yes	Yes	
Kabogor Dispensary	No	Yes	Yes	Yes	No	
Kamar Dispensary	No	Yes	Yes	Yes	Yes	

Sub County	Facility	CP 1	CP 2	CP 3	CP 4	CP 5
Marigat	Kapkole Dispensary	No	Yes	Yes	Yes	No
	Kiplombe Dispensary	No	Yes	Yes	Yes	Yes
	Maji Moto Dispensary	No	Yes	Yes	Yes	Yes
	Mogorwa Health Centre	No	Yes	Yes	Yes	No
	ngendael Dispensary	No	Yes	Yes	Yes	Yes
	ng'etmoi Dispensary	No	Yes	Yes	Yes	No
	Sacho High Dispensary	No	Yes	Yes	Yes	No
	Salawa Primary Health Care	No	Yes	Yes	Yes	Yes
	Simotwet Dispensary	No	Yes	Yes	Yes	Yes
	Sirwa Dispensary	No	Yes	No	Yes	Yes
	Solian Health Centre	No	Yes	Yes	Yes	Yes
	Timboroa Health Centre	No	Yes	Yes	Yes	Yes
	Tinet Dispensary	No	Yes	Yes	Yes	Yes
	Tinomoi Dispensary	No	Yes	Yes	Yes	Yes
	Torong'o Health Centre	No	Yes	Yes	Yes	Yes
	Tugumoi Dispensary	No	Yes	Yes	Yes	Yes
	Waseges Dispensary	No	Yes	Yes	Yes	No
	Bekibon Dispensary	No	Yes	Yes	Yes	Yes
	Eldume Dispensary	No	Yes	Yes	Yes	Yes
	Kabimoi Dispensary	No	Yes	Yes	Yes	No
	Kapkelelwa Dispensary	No	Yes	Yes	Yes	Yes
	Kasoy'o Dispensary	No	Yes	Yes	Yes	No
	Kimng'orom Dispensary	No	Yes	Yes	Yes	Yes
	Kokwa Dispensary	No	Yes	Yes	Yes	Yes
	Lobo! Dispensary	No	Yes	Yes	Yes	Yes
	Marigat Sub County Hospital	No	Yes	Yes	Yes	Yes
Mercy Mission Hospital	No	Yes	No	No	No	
Mochongoi H/C	No	Yes	Yes	Yes	Yes	
Mogotio Catholic Mission Hospital	No	Yes	Yes	Yes	Yes	
Olkokwe Health Centre	No	Yes	Yes	Yes	Yes	

Sub County	Facility	CP 1	CP 2	CP 3	CP 4	CP 5
Mogotio	Sagasagik Dispensary	No	Yes	Yes	Yes	No
	Seretunin Dispensary	No	Yes	Yes	Yes	Yes
	Tuyobei Dispensary	No	Yes	Yes	Yes	Yes
	Cheberen Health Centre	No	Yes	Yes	Yes	Yes
	Chemoinoi Dispensary	No	Yes	No	Yes	Yes
	Eming Health Centre	No	Yes	No	No	Yes
	Emsos Dispensary	No	Yes	No	No	Yes
	Kampi ya Samaki	No	Yes	Yes	Yes	Yes
	Kapkein Dispensary	No	Yes	No	Yes	Yes
	Kapkomoi Dispensary	No	Yes	Yes	Yes	No
	Kipkitur Dispensary	No	Yes	Yes	Yes	Yes
	Kipsacho Dispensary	No	Yes	Yes	Yes	No
	Kipsoit Dispensary	No	Yes	Yes	Yes	Yes
	Kiptuno Dispensary	No	Yes	Yes	Yes	Yes
	Kisanana Health Centre	No	Yes	No	Yes	Yes
	Koitebes Dispensary	No	Yes	Yes	Yes	Yes
	Marigat Catholic Mission	No	Yes	Yes	Yes	Yes
	Molok Dispensary	No	Yes	Yes	Yes	No
	Molos Dispensary	No	Yes	Yes	No	Yes
	Molosirwe Dispensary	No	Yes	Yes	No	Yes
	Mugurin Dispensary	No	Yes	Yes	Yes	Yes
	Museruchi Dispensary	No	Yes	Yes	Yes	Yes
	nakurtakwei Dispensary	No	Yes	Yes	Yes	Yes
	ngoron Dispensary	No	Yes	Yes	Yes	Yes
	Olabel Dispensary	No	Yes	Yes	Yes	Yes
Olerit Dispensary	No	Yes	Yes	Yes	Yes	
Orokwo Dispensary	No	Yes	Yes	Yes	No	
Riwo Dispensary	No	Yes	Yes	Yes	Yes	
Rosoga Dispensary	No	Yes	Yes	Yes	No	
Sabor Dispensary	No	Yes	Yes	Yes	Yes	

Sub County	Facility	CP 1	CP 2	CP 3	CP 4	CP 5
	Salawa Health Centre	No	Yes	Yes	Yes	Yes
	Sore Dispensary	No	Yes	No	Yes	Yes
Tiaty East	Tangulbei Mission Hospital	No	Yes	Yes	Yes	Yes
	Tangulbei Sub CountyHospital	No	Yes	Yes	Yes	Yes
Compliant		2	121	103	115	101
Non-Compliant		120	1	19	7	21

Key/Details:

CP1	Does the facility receive Covid-19 vaccine related directives/information from the National/County ?
CP2	Did the facility receive communication from the National/County /subCounty government
CP3	Has the Facility carried out advocacy?
CP4	Has the Facility carried out mobilization?
CP5	Did the Facility carry out any outreaches?

Appendix 14: Monitoring and Supervision at County Level – Baringo County

County	M1	M2	M3	M4	M5	M6	M7	M8	M9	M10	M11	M12	M13	M14	M15
Baringo County	Yes	No	Yes	No	Yes	Yes	No	No	Yes	Yes	No	No	Yes	Yes	Yes
Compliant	1	0	0	0	1	1	0	0	1	1	0	0	1	1	1
Non-Compliant	0	1	1	1	0	0	1	1	0	0	1	1	0	0	0

Key/Details:

M1	Did the County designate an in charge/Committee for monitoring Covid-19 vaccine roll out?
M2	Were there terms of reference for the M&E committee?
M3	Were there reports of the M & E committee
M4	Are the recommendation of the monitoring and evaluation Team implemented?
M5	Did the County receive any tablets from the Ministry?
M6	Were the tablets distributed?
M7	Are the tablets in good working conditions?
M8	Are the Personnel involved in the roll out been receiving airtime?
M9	Did the County /Sub County put in place any measures to ensure patients report adverse effect?
M10	Has the County/Sub County/facility received Adverse effect booklet etc. that are required to report adverse effects?
M11	Has the Sub County/facility experienced any instance of adverse effect?
M12	Does the County/Sub County/Facility monitor temperature during transportation of vaccines?
M13	Does the County/Sub County record temperature every morning and evening in the temperature monitoring chart?
M14	Does the County/Sub County/Facility monitor for the expiry of the vaccines?
M15	Has the Sub County/County monitored the Pfizer and Moderna vaccines for the 30 days expiry period after thawing?

Appendix 15: Monitoring and Supervision Sub County Level- Baringo County

Sub County	M1	M2	M3	M4	M5	M6	M7	M8	M9	M10	M11	M12
Baringo Central	Yes	Yes	Yes	Yes	Yes	Yes	Yes	No	Yes	Yes	Yes	Yes
Baringo North	Yes	Yes	Yes	Yes	Yes	Yes	Yes	No	Yes	Yes	Yes	Yes
East Pokot	Yes	Yes	Yes	Yes	Yes	Yes	Yes	No	Yes	Yes	Yes	Yes
Koibatek	Yes	Yes	Yes	Yes	Yes	Yes	Yes	No	Yes	Yes	Yes	Yes
Marigat	Yes	Yes	Yes	Yes	Yes	Yes	Yes	No	Yes	Yes	Yes	Yes
Mogotio	Yes	Yes	Yes	Yes	Yes	Yes	Yes	No	Yes	Yes	Yes	Yes
Tiaty East	Yes	Yes	Yes	Yes	Yes	Yes	Yes	No	Yes	Yes	Yes	Yes
Compliant	7	7	7	7	7	7	7	0	7	7	7	7
Non-Compliant	0	0	0	0	0	0	0	7	0	0	0	0

Key/Details:

M1	Did the County designate an in charge for monitoring Covid-19 vaccine roll out?
M2	Did the County receive any tablets from the Ministry?
M3	Were the tablets distributed?
M4	Are the tablets in good working conditions?
M5	Are the Personnel involved in the roll out been receiving airtime?
M6	Did the County /Sub County put in place any measures to ensure patients report adverse effect?
M7	Has the County/subCounty /facility received Adverse effect booklet etc that are required to report adverse effects?
M8	Has the subCounty /facility experienced any instance of adverse effect?
M9	Does the County/Sub-County /Facility monitor temperature during transportation of vaccines?
M10	Does the County/Sub-County record temperature every morning and evening in the temperature monitoring chart?
M11	Does the County/Sub-County /Facility monitor for the expiry of the vaccines?
M12	Has the Sub County/County monitored the Pfizer and Moderna vaccines for the 30 days expiry period after thawing?

Appendix 16: Monitoring & Supervision at Facility Level- Baringo County

Sub County	Facility Level	M1	M2	M3	M4	M5	M6	M7	M8	M9	M10	M11
Baringo Central	Baringo Central Referral Hospital	Yes	Yes	Yes	Yes	Yes	No	Yes	Yes	Yes	Yes	Yes
	Borwonin Dispensary	No	No	No	No	No	No	Yes	Yes	Yes	Yes	Yes
	Cheplambus dispensary	No	No	No	No	No	No	Yes	Yes	Yes	Yes	Yes
	chesongo dispensary	Yes	Yes	Yes	No	No	No	Yes	Yes	Yes	Yes	Yes
	Kapkelelwa Dispensary	Yes	Yes	Yes	No	No	No	Yes	Yes	Yes	Yes	Yes
	Kapkole Dispensary	No	No	No	No	No	No	Yes	Yes	Yes	Yes	Yes
	Kapkomoi Dispensary	No	No	No	No	No	No	Yes	Yes	Yes	Yes	Yes
	Kapkut Dispensary	Yes	No	Yes	Yes	Yes	No	No	Yes	Yes	Yes	Yes
	Kaptimbor Dispensary	Yes	Yes	Yes	No	No	No	No	Yes	Yes	Yes	Yes
	Kasooyo Dispensary	Yes	Yes	Yes	No	No	No	No	Yes	Yes	Yes	Yes
	Kerio Hospital	No	No	No	Yes	Yes	No	No	No	Yes	Yes	Yes
	Kiboino Dispensary	Yes	Yes	Yes	No	No	No	No	Yes	Yes	Yes	Yes
	Kipsacho Dispensary	No	No	No	No	No	No	No	Yes	Yes	Yes	Yes
	Kipsoit Dispensary	No	No	No	No	No	No	No	Yes	Yes	Yes	Yes
	Kiptagich Dispensary	Yes	No	No	No	No	No	No	Yes	Yes	Yes	Yes
	Kituro Health Centre	Yes	No	Yes	Yes	Yes	Yes	No	Yes	Yes	Yes	Yes
Mogorwa Health Centre	Yes	No	No	No	No	No	No	Yes	Yes	Yes	Yes	
Ng'etmoi Dispensary	No	No	No	No	No	No	No	Yes	Yes	Yes	Yes	
Ochii Dispensary	No	No	No	No	No	No	No	Yes	Yes	Yes	Yes	
Orokwo Dispensary	No	No	No	No	No	No	No	Yes	Yes	Yes	Yes	
Riwo Dispensary	Yes	No	Yes	Yes	Yes	Yes	No	Yes	Yes	Yes	Yes	
Sacho High Dispensary	No	No	No	No	No	No	No	Yes	Yes	Yes	Yes	
Salawa Health Centre	Yes	Yes	Yes	No	No	No	No	Yes	Yes	Yes	Yes	

Sub County	Facility Level	M1	M2	M3	M4	M5	M6	M7	M8	M9	M10	M11
Baringo North	Salawa Primary Health Care	Yes	Yes	No	No	No	No	Yes	Yes	Yes	Yes	Yes
	Seretunin Dispensary	Yes	No	No	Yes	Yes	No	Yes	Yes	Yes	Yes	Yes
	Sorok Dispensary	No	No	No	No	No	No	Yes	Yes	Yes	Yes	Yes
	Talal Health Centre	No	No	No	Yes	Yes	No	Yes	Yes	Yes	Yes	Yes
	Tenges Health Centre	Yes	Yes	Yes	No	No	No	Yes	Yes	Yes	Yes	Yes
	Timboiywo Dispensary	Yes	Yes	Yes	no	no	No	Yes	Yes	Yes	Yes	Yes
	Timomoi dispensary	Yes	Yes	Yes	No	No	No	Yes	Yes	Yes	Yes	No
	Baringo North Referral Hospital	Yes	Yes	Yes	Yes	Yes	No	No	Yes	Yes	Yes	Yes
	Barwessa Health Centre	Yes	No	Yes	Yes	Yes	Yes	Yes	Yes	Yes	Yes	Yes
	Chemura	No	No	No	Yes	No	No	Yes	Yes	No	Yes	Yes
	Kabimoi Dispensary	No	No	No	Yes	Yes	No	Yes	Yes	Yes	Yes	Yes
	Kapluk Dispensary	Yes	No	Yes	Yes	Yes	No	Yes	Yes	Yes	Yes	Yes
	Kipcherere	Yes	No	Yes	Yes	No	No	Yes	Yes	Yes	Yes	Yes
Kipsaraman Dispensary	No	No	No	Yes	No	No	No	Yes	Yes	No	Yes	
Kuilui Health Centre	No	No	No	Yes	Yes	No	Yes	Yes	Yes	Yes	Yes	
Sibilo	No	No	No	Yes	Yes	No	Yes	Yes	Yes	Yes	Yes	
Sigoro Dispensary	Yes	No	Yes	Yes	No	No	No	Yes	Yes	Yes	Yes	
Tunoivo Dispensary	No	No	No	Yes	No	No	No	Yes	Yes	Yes	Yes	
Barpello Dispensary	Yes	Yes	Yes	Yes	No	No	No	Yes	Yes	Yes	Yes	
Chemolingot Sub County Hospital	Yes	Yes	Yes	Yes	Yes	No	No	Yes	Yes	Yes	Yes	
Chepturu Dispensary	Yes	No	Yes	Yes	Yes	No	Yes	Yes	Yes	Yes	Yes	
Kabunyany Dispensary	Yes	No	Yes	Yes	Yes	No	Yes	Yes	Yes	Yes	Yes	
Kipnai Dispensary	Yes	No	Yes	Yes	Yes	No	Yes	Yes	Yes	Yes	Yes	
Kolowa Health Centre	Yes	No	Yes	Yes	Yes	No	Yes	Yes	Yes	Yes	Yes	
Kositel Dispensary	Yes	No	Yes	Yes	Yes	Yes	No	Yes	Yes	Yes	Yes	

Sub County	Facility Level	M1	M2	M3	M4	M5	M6	M7	M8	M9	M10	M11
Koibatek	Lodengo Health Centre	Yes	Yes	No	No	Yes	Yes	Yes	Yes	Yes	Yes	Yes
	Ngoron Dispensary	Yes	No	Yes	Yes	Yes	No	Yes	Yes	Yes	Yes	Yes
	Arama Dispensary	No	No	No	Yes	Yes	No	Yes	Yes	Yes	Yes	Yes
	Eldama Ravine AIC	Yes	Yes	Yes	No	No	No	Yes	Yes	Yes	Yes	Yes
	Eldama Ravine Referral Hospital	Yes	Yes	Yes	Yes	No	No	No	Yes	Yes	Yes	Yes
	Equator Health Centre	Yes	No	Yes	Yes	Yes	No	Yes	Yes	Yes	Yes	Yes
	Esageri Health Centre	Yes	No	Yes	Yes	Yes	No	Yes	Yes	Yes	Yes	Yes
	Igure Dispensary	No	No	No	Yes	No	No	No	Yes	Yes	Yes	Yes
	Kabiyet Dispensary	No	No	No	Yes	Yes	No	Yes	Yes	Yes	Yes	Yes
	Kabogor Dispensary	No	No	No	Yes	Yes	No	Yes	Yes	Yes	Yes	Yes
	Kapchholoi Dispensary	No	No	No	Yes	No	No	No	Yes	Yes	Yes	Yes
	Kiplombe Dispensary	No	No	No	Yes	No	No	Yes	Yes	Yes	Yes	Yes
	Maji Mazuri Dispensary	Yes	No	Yes	Yes	Yes	No	Yes	Yes	Yes	Yes	Yes
	Mercy Mission Hospital	No	No	No	Yes	Yes	No	Yes	Yes	Yes	Yes	Yes
	Nakurtakwei Dispensary	No	No	No	Yes	Yes	No	Yes	Yes	Yes	Yes	Yes
	Saos Dispensary	No	Yes	No	Yes	Yes	No	Yes	Yes	Yes	Yes	Yes
	Simotwet Dispensary	No	No	No	Yes	No	No	No	Yes	Yes	Yes	Yes
	Sirwa Dispensary	Yes	Yes	Yes	Yes	Yes	No	Yes	Yes	Yes	Yes	Yes
	Sirwa Health Centre	Yes	Yes	Yes	Yes	Yes	No	Yes	Yes	Yes	Yes	Yes
	Sore Dispensary	Yes	Yes	Yes	Yes	Yes	No	Yes	Yes	Yes	Yes	Yes
Timbora Health Centre	No	No	No	Yes	Yes	No	Yes	Yes	Yes	Yes	Yes	
Tinet Dispensary	No	No	No	Yes	Yes	No	Yes	Yes	Yes	Yes	Yes	
Torongo Health Centre	No	No	No	Yes	Yes	No	Yes	Yes	Yes	Yes	Yes	
Tugumoi Dispensary	No	No	No	Yes	No	No	Yes	No	Yes	Yes	Yes	
Bekbon Dispensary	Yes	Yes	Yes	Yes	Yes	Yes	Yes	Yes	Yes	Yes	Yes	
Eldume dispensary	No	No	No	Yes	Yes	No	Yes	Yes	Yes	Yes	Yes	

Sub County

Facility Level

Koibatek

Marigat

Sub County	Facility Level	M1	M2	M3	M4	M5	M6	M7	M8	M9	M10	M11
Mogotio	Kampi ya Samaki	No	No	No	Yes	Yes	No	Yes	Yes	Yes	Yes	Yes
	Kapkuikui Dispensary	Yes	No	Yes	Yes	Yes	No	Yes	Yes	Yes	Yes	Yes
	Kimalel Health Centre	Yes	Yes	No	No	No	No	Yes	Yes	Yes	No	Yes
	Kokwa Dispensary	No	No	No	Yes	Yes	No	Yes	Yes	Yes	Yes	Yes
	Loboi dispensary	Yes	Yes	Yes	No	No	No	Yes	Yes	Yes	No	Yes
	Mariyat Catholic Mission	Yes	Yes	Yes	No	No	No	Yes	Yes	Yes	Yes	Yes
	Mariyat Sub District Hospital	Yes	Yes	Yes	No	No	No	Yes	Yes	Yes	Yes	Yes
	Mochongoi H/C	Yes	Yes	Yes	Yes	Yes	No	Yes	Yes	Yes	Yes	Yes
	Olarabel Dispensary	No	No	No	Yes	Yes	No	Yes	Yes	Yes	Yes	Yes
	Sabor Dispensary	No	No	No	No	No	No	Yes	Yes	Yes	Yes	Yes
	Sandai Dispensary	Yes	Yes	Yes	No	No	No	Yes	Yes	Yes	Yes	Yes
	Tuiyobe! Dispensary	No	No	No	Yes	Yes	No	Yes	Yes	Yes	Yes	Yes
	Cheberen Health Centre	No	No	No	No	No	No	Yes	Yes	Yes	Yes	Yes
	Chemoinoi Dispensary	No	No	No	Yes	Yes	No	Yes	Yes	Yes	Yes	Yes
Eming Health Centre	Yes	Yes	Yes	Yes	Yes	No	Yes	Yes	Yes	Yes	Yes	
Emsos Dispensary	No	No	No	Yes	Yes	No	Yes	Yes	Yes	No	No	
Kamar Dispensary	No	No	No	Yes	Yes	No	Yes	Yes	Yes	Yes	Yes	
Kapkein Dispensary	No	No	No	Yes	Yes	No	Yes	Yes	Yes	Yes	Yes	
Kibotany Dispensary	No	No	No	Yes	Yes	No	Yes	Yes	Yes	Yes	Yes	
Kimng'orom Dispensary	Yes	No	Yes	Yes	Yes	No	Yes	Yes	Yes	No	Yes	
Kimose Dispensary	No	No	No	Yes	Yes	No	Yes	Yes	Yes	Yes	Yes	
Kipkitur Dispensary	Yes	No	No	Yes	Yes	No	Yes	Yes	Yes	Yes	Yes	
Kipsogon Dispensary	No	No	No	Yes	Yes	No	Yes	Yes	Yes	Yes	Yes	
Kiptoim Dispensary	No	No	No	Yes	Yes	No	Yes	Yes	Yes	Yes	Yes	
Kiptuno Dispensary	Yes	No	No	Yes	Yes	No	Yes	Yes	Yes	Yes	Yes	
Kisanana Health Centre	Yes	Yes	Yes	Yes	Yes	No	Yes	Yes	Yes	Yes	Yes	

Sub County	Facility Level	M1	M2	M3	M4	M5	M6	M7	M8	M9	M10	M11
Tiaty East	Koitebes Dispensary	No	No	No	Yes	No	No	Yes	Yes	Yes	Yes	Yes
	Maji Moto Dispensary	No	No	No	Yes	Yes	No	Yes	Yes	Yes	Yes	Yes
	Mogotio Sub CountyHospital	No	No	Yes	Yes	No	No	Yes	Yes	Yes	Yes	Yes
	Molok Dispensary	No	No	No	Yes	Yes	No	Yes	Yes	Yes	Yes	Yes
	Molos Dispensary	No	No	No	No	No	No	Yes	Yes	Yes	Yes	Yes
	Molosiwe Dispensary	No	No	No	Yes	No	No	Yes	Yes	Yes	Yes	Yes
	Mugurin Dispensary	No	No	No	Yes	Yes	No	Yes	Yes	Yes	Yes	Yes
	Muserchi Dispensary	Yes	No	Yes	Yes	No	No	Yes	Yes	Yes	Yes	Yes
	Ngendael Dispensary	No	No	No	Yes	Yes	No	Yes	Yes	Yes	Yes	Yes
	Ngubereiti Health Centre	No	No	No	Yes	Yes	No	Yes	Yes	Yes	Yes	Yes
	Oldebes Dispensary	No	No	No	Yes	No	No	Yes	Yes	Yes	Yes	Yes
	Olkokwe Health Centre	No	No	No	Yes	Yes	No	Yes	Yes	Yes	Yes	Yes
	Olerit Dispensary	No	No	No	Yes	Yes	No	Yes	Yes	Yes	Yes	Yes
	Radat Dispensary	Yes	No	Yes	Yes	No	No	Yes	Yes	Yes	Yes	Yes
	Rosoga Dispensary	No	No	No	Yes	Yes	No	Yes	Yes	Yes	Yes	Yes
	Sagasagik Dispensary	Yes	No	No	Yes	Yes	No	Yes	Yes	Yes	Yes	Yes
	Sagat Dispensary	No	No	No	Yes	No	No	Yes	Yes	Yes	Yes	Yes
	Solian Health Centre	Yes	No	Yes	Yes	Yes	Yes	Yes	Yes	Yes	Yes	Yes
	Wasages Dispensary	Yes	No	No	Yes	Yes	No	Yes	Yes	Yes	Yes	Yes
	Tangulbei Mission Hospital	Yes	Yes	Yes	No	No	No	Yes	Yes	Yes	Yes	Yes
Tangulbei Sub CountyHospital	Yes	Yes	Yes	Yes	Yes	Yes	No	Yes	Yes	Yes	Yes	
Compliant	60	31	54	86	57	3	103	119	119	121	116	120
Non-Compliant												
		62	91	68	36	65	119	19	3	1	6	2

Key/Details:

M1	Did the Facility receive any tablets for Covid-19 vaccine data entry?
M2	Has the facility staff been receiving airtime on time?
M3	Are the tablets in good working conditions?
M4	As the County/subCounty /facility put in place to ensure patients report adverse effect
M5	Has the County/subCounty /facility received any Adverse effect booklet etc. that are required to report adverse effects?
M6	Has the subCounty /facility experienced any instance of adverse effect?
M7	Does the County/Sub-County /Facility monitor temperature during transportation of vaccines
M8	Does the County/Sub-County /Facility record temperature every morning and evening in the temperature monitoring chart
M9	Does the County/Sub-County /Facility monitor for the expiry of the vaccines?
M10	Are the Pfizer and Moderna vaccines been monitored for the 30 days expiry period after thawing?
M11	Has the County /subCounty /Facility been making use of the temperature monitoring tools?

CONTACTS

Office of the Auditor-General
Anniversary Towers
P.O. Box 30084 - 00100 Nairobi, Kenya
Tel: 254 20 3214000
E-mail: info@oagkenya.go.ke



[@OAG_Kenya](https://twitter.com/OAG_Kenya)



Office of the Auditor-General Kenya



www.oagkenya.go.ke



Office of the Auditor-General Kenya