



KUSCCO LTD.

Kenya Union of Savings and Credit Co-operatives Ltd

PARLIAMENT
OF KENYA
LIBRARY



**2008 ANNUAL REPORT
&
FINANCIAL STATEMENTS**

TABLE OF CONTENTS

Content	Page
Notice of Meeting	2
Board of Directors	3
Chairman's report	4-5
Managing Director's Report	6-7
Corporate Governance	8
Statistical Information	9
Directors' Report	10
Statement of Directors' Responsibilities	11
Auditors' Report	12
FINANCIAL STATEMENTS	
Statement of Surplus and Loss Account	13
Balance Sheet	14
Statement of changes in Equity	15
Cash flow Statement	16
Accounting Policies	17-18
Other Notes to the Financial Statements	19-31
Senior Management	32



20th April 2009

To: All KUSCCO Delegates

NOTIFICATION OF THE KUSCCO 22nd ANNUAL DELEGATES MEETING

Notice is hereby given that the 22nd Annual Delegates Meeting of the Kenya Union of Savings and Credit Co-operatives (KUSCCO) Limited will be held on Friday, 22nd May 2009 at KUSCCO Training and Conference Facility, Mezzanine Floor, KUSCCO Centre, Upper Hill, Nairobi beginning at 9.00 a.m.

AGENDA

- 1 To adopt the Agenda of the Meeting.
- 2 To receive apologies.
- 3 To confirm minutes of the Annual Delegates Meeting held on Saturday, 31st May 2008 and matters arising thereof.
- 4 To receive the Chairman's report.
- 5 To consider matters arising from the Chairman's report.
- 6 To receive 2008 Audited Accounts.
- 7 To consider Auditors for year 2010.
- 8 To consider and approve the year 2010 budget and 2009 supplementary budget.
- 9 To approve the Maximum Borrowing Powers.
- 10 To confirm new members to the Union.
- 11 To confirm election of new delegates and Board members.
- 12 To transact any other business that may properly be transacted at the Annual Delegates Meeting.

BY ORDER OF THE BOARD OF DIRECTORS



Carilus Ademba

MANAGING DIRECTOR

BOARD OF DIRECTORS



F. Kimutai
Chairman



S. Mung'athia
V. Chairman



C. Ademba
Managing Director



Mrs. J. Mango
Director



H. Aywah
Director



J. K. Mwangi
Director



Mrs. Z. Chishenga
Director



Prof. Akeyo Omolo
Director



J. Sagalla
Director



R. Bukachi
Director



W. Langat
Director



B. Mukhandia
Director



G. Magutu
Director



E. Oyugi
Director



CHAIRMAN'S STATEMENT

It is my pleasure to welcome you all to the 22nd Annual Delegates Meeting of the Kenya Union of Savings and Credit Co-operatives Limited which also marks the Union's 36th anniversary and to present to you the Annual Report and Financial Statements for the Union for the year ended 31st December 2008.

The Operating Environment:

Given that the Union draws its membership across all sectors of our economy; its performance should therefore be viewed in the context of Country's overall economic performance. The economy is estimated to have achieved a 2.5% annual growth rate in the year 2008 against a target of 7%. The modest growth rate was occasioned by a slow down in the key economic activities i.e. Agriculture, Tourism and Manufacturing. However, Building and Construction, Wholesale and Retail Trade and Financial Services Sectors realized positive growth rates.

The beginning of the year was characterized by a lot of uncertainty following the disputed general elections at the end of year 2007. The resultant skirmishes disrupted business, particularly those in key sectors like transport and tourism and displacement of persons who form a good part of our membership. These disruptions also triggered a sharp rise in prices of fuel and food stuff due to the damage to the installations and infrastructure that in turn severely affected the supply chain.

Inflation:

The consumer price index improved from 239.8 points in year 2007 to 306.8 points in December 2008. The overall 12 months inflation rose from 12.2% in December 2007 to 27.7% in December 2008.

The overall annual average inflation rate rose from 9.8% in 2007 to 26.4% in December 2008. This rise in inflation reflected the impact of the increase in fuel prices and food shortage due to disruption of farming activities following the post election violence during the first quarter of 2008. The inflation is however expected to slow down as a result of declining international crude oil prices and deliberate steps being taken by the Government to stabilize food supplies.

Financial Markets:

The short term interest rates were stable with slight fluctuations between 7.0% and 9.1% during the year 2008. The benchmark 91-day Treasury Bills rates opened the year at 6.99% and closed at 8.59%. The interest rate on the 182-day Treasury Bills rose from 8.09% in January 2008 to 9.05% at end of the year.

The average inter bank rate rose from 7.6% in January 2008 to 8.1% in July 2008 but dropped to 6.9% by end of December 2008. The short term interests are therefore expected to fall further due to increased liquidity in the market occasioned by the Central Bank's decision to lower its rate (CBR) from 9% to 8.5%.

Performance Review and Financial Results

We must appreciate that considering the very challenging environment in which the results were achieved, our performance for the year was very satisfactory.

The turnover increased from Kshs. 271Million to Kshs. 320Millin representing 18% increase. Profit before taxes and rebates to members rose from Kshs. 35,075 Million to Kshs. 36,046 Million in year 2008. Total Assets increased by 16% from Kshs. 2.516Billion as at 31st December 2007 to Kshs. 2,9 Billion as at 31st December 2008.

Dividend

In view of the dividend pay out record over the last 4 years and the need to maintain sustained growth, the Board has recommend a dividend of 9% and this will be highest dividend ever paid in the history of the Union. This represents a total pay out of Kshs 27.2Million.

Board Changes

In 2008, Mr. Okello N'jaramba, Mr. Peter Njuguna, Mr. George Aseko and Mr. J. Ambani retired as board members of the Union. During the same period, Mr. Weldon Langat, Mr. George Mwangi Magutu, Mr. Elly Oyugi and Mr. Highway Aywah representing Rift Valley, Central and Nairobi Provinces respectively joined the board. On behalf of the board, I wish to thank all those who retired for the contribution they made to the Union during their tenure and welcome the new board members.

Co-operative Reforms

Last year was a challenging year, not just for the co-operative movement but for the country as a whole. However, for the co-operative movement it was the year that saw the achievement of several significant milestones. One of these was the celebration of the 100 years of co-operative movement (1908 - 2008), a testimony of how far the movement has come since the formation of the first co-operative in Kipkelion and how much we have grown to become key drivers of the Kenyan economy.

Another accomplishment was the publishing of the SACCO Societies Bill and its subsequent presentation to Parliament. After intense consultations among stakeholders and appropriate lobbying for enactment, the bill finally received Presidential assent on the 24th December 2008.

Collaboration

KUSCCO collaborates with all the major National Co-operative Organizations (NACOs) including Co-operative Bank who are our official Bankers, Co-operative Insurance Company (CIC) who is our official insurance provider, Co-operative College where we train our staff for capacity building, Kenya National Federation of Co-operatives (KNFC), National Co-operative Housing Union (NACHU) among other partners.

International Relations

Kenya has now been admitted to the World Council of Credit Unions (WOCCU) Group of 10 (G10). The WOCCU G10 comprises of the ten largest credit union systems in the world and was formerly the WOCCU G7 whose members were Australia, Brazil, Canada, Caribbean Confederation, Poland, Ireland and the United States. At the groups' meeting in February 2009, the forum was expanded to include Kenya, Mexico and Costa Rica. The G10 brings together heads of the largest Co-operative Movements in WOCCU on an annual basis and affords them a platform to forge relationships, discuss issues that confront their movements and in turn seek collaborative solutions.

On a related note, we would like our leaders to know that grand plans are in the pipeline for the revival of the collapsed African Confederation of Co-operative Savings and Credit Associations (ACCOSCA). The ACCOSCA Board has established a Head Office in Nairobi and appointed a Chief Executive Officer (CEO), a position that has been assigned to the KUSCCO Managing Director in an acting capacity.

International Conferences And Visits

The 2008 World Council of Credit Union's (WOCCU) Annual Conference was held in Hong Kong China. This year, the WOCCU conference will be held in Barcelona, Spain between July, 26th - 29th 2009. Other trips that have been lined up by our education and training department include South Africa, Ireland and Uganda.

Challenges

The growth and stability of this Union is dependant on the stability of our affiliate SACCOs. In this regard, we are seriously concerned with the challenges facing our affiliates. On this note, may I also thank the Government for decisively addressing the issue of non-remittance of members' dues by employers to our SACCOs. These issues have been a big threat to the very survival of our SACCOs in this country, and we appeal that the pressure on the outstanding funds be sustained.

CONCLUSION

In conclusion, on behalf of the Board of Directors, Management and Staff, I wish to extend appreciation to our SACCO affiliates for their utilization of our unique and customized products and services. In order to actualize our vision of being the leading National Co-operative Organization for SACCOs in Kenya and true to our mission statement, we need to keep abreast with the vast and rapid changes taking place in the economy and the country at large.

We would like to thank our delegates for continuous service to SACCO Societies in Kenya and the valuable contributions in steering KUSCCOs to greater heights.

Fidelis Kimutai
KUSCCO National Chairman
22nd May 2009

MANAGING DIRECTOR'S STATEMENT

Co-operators will remember 2008 as the year that saw the enactment of the SACCO Societies Bill after years of lobbying, debate and deliberations with stakeholders.

The growth registered by SACCOs and their diversification into banking and micro-finance made it imperative to have a SACCO specific legislation that will create a framework for improved supervision, regulation and compliance with international prudential standards by SACCOs. It is expected that the SACCO Societies Act, No. 14 of 2008 will break new ground in how SACCOs conduct their business and more specifically in the running of Front Office Service Activities (FOSAs).

OPERATIONAL REVIEW

The worsening global economic and food crises continue to be a major concern for all. Our country is today faced with major resource constraints more so because opportunities for accessing donor funds and other external support have drastically diminished.

While most co-operatives have not experienced the full glare of the crisis, SACCOs that are based on the tourism industry are likely to suffer a set back since many tourists have been forced to cut back on luxuries. The same goes for those engaged in the production of export agricultural products owing to a drop in consumption of these by the foreign markets.

Despite the tough times, SACCOs have managed to retain their workforce and continue to provide essential services at affordable prices and in this way assist communities to withstand the worse effects of the economic downturn.

During the year under review, I am pleased to report that the Union managed to register growth in all its business units namely the Central Finance Programme, Risk Management Services, Education and Training Services, KUSCCO Housing Fund and Corporate Affairs and Marketing Activities.

Following the successful completion of KUSCCO Headquarters, the Board and Management have since redirected all energies towards the implementation of our new Strategic Plan for 2009-2013. Overall, the Plan seeks to provide a coherent, systematic and sustainable road-map on which to anchor our strategic initiatives for the future benefits to our members.

Our Strategic Plan has also been realigned to that of the Ministry of Cooperative Development and Marketing and the Kenya Vision 2030.

In order to undertake and realize the various projects outlined in the Strategic Plan, KUSCCO will conduct a shares drive for 2009 in a bid to capitalize the Union for which we call upon our loyal members to support us.

PERFORMANCE**1. The Central Finance Program**

This is the inter-lending facility for all SACCOs affiliated to the Union and operates on the same principles as the SACCO Societies. It mobilizes funds within the SACCO Movement, extends the credit boundaries thereby accelerating the lending capacities of SACCOs. In the year under review gross interest income increased from Kshs.145.5Million to Kshs.152.6 Million. However, due to the high cost of finance, the net surplus dropped from Kshs. 66.9Million to Kshs.59.5Million.

2. Risk Management Services

The department provides SACCO Societies with a Fund that gives them mutual protection against loan losses. This enables SACCOs to co-operate horizontally and also spread their risks among fellow societies. The programme covers loans to members, committee members' risks, funeral expenses and member savings. The gross income increased by 5.8% from Kshs.51.7Million to Kshs.54.7Million.

3. Education and Training Services

The department offers both national and international training and education services to SACCO members throughout the year. The department has been very instrumental in the sensitization of members with regard to the SACCO Act. Through the program, SACCO officials, staff and members are educated on governance issues, financial management, Human Resource, taxation, asset and liability management among others. There was modest increase in gross income (seminar fees) from Kshs.36.6 Million to Kshs.37Million.

4. KUSCCO Housing Fund

The KUSCCO Housing Fund is arguably one of Kenya's cheapest housing loan schemes through which SACCO members have the opportunity to save towards purchase of land, house construction, outright purchase of a house or house renovation. SACCOs are also given an opportunity to save and acquire loans for construction of their business premises.

The fund recorded an impressive increase in gross interest income from Kshs. 21.4Million to Kshs. 29.2Million. The gross income improved by 36.49%.

5. Business Development, Research and Consultancy Services

Some of the consultancy services provided to our affiliates and individual members include strategic planning, feasibility studies, training needs analysis, curriculum development, salary and benefits survey, recruitment services, job description and evaluation, organizational development and restructuring among others.

The department has recently introduced a new product that is packaged to assist SACCOs in keeping of financial records. The Department recorded a gross income of Kshs. 3.3Million compared to Kshs. 2.6Million last year.

6. KUSASA

Despite stiff competition, KUSASA recorded a gross income of Kshs. 8.064Million as compared to Kshs. 8.1 Million the previous year.

6. Corporate Affairs and Marketing Department

The department oversees the running of Union activities at the regional offices of Western, Mt. Kenya, Rift Valley, Nairobi and Coast. Other functions include Guest Relations, Brand Management and overall Marketing. As an advocacy and publicity tool, the department publishes the "SACCOStar" Magazine on a quarterly basis. This publication realized an increase in gross income by 70.34% from 2.5Million to Kshs. 4.3Million.

As part of our Corporate Social Responsibility initiative, the Union staff participated in a blood donation drive to build up reserves of the country's blood banks.

We thank all our SACCO members and supporters without whom we would not have walked this far.

C. Ademba
Managing Director

CORPORATE GOVERNANCE

The Board of Directors of KUSCCO Limited is responsible for the development and implementation of policies that demonstrate best corporate governance practices in the Union. The Board of Directors is responsible for the governance of the UNION and is accountable to the shareholders for ensuring that the UNION complies with the highest standards of corporate governance and business ethics. The directors strive to ensure that the Union is committed to business integrity and professionalism in all its activities.

Board of Directors

The Board has fourteen members with the Managing Director as an ex-officio. The board maintains effective control over strategic, financial, operational, policy and compliance issues. Timely information is provided to enable the board fulfil this role. The board has delegated authority for day to day operations to the Managing Director but gives direction and guidance on general policy.

The board is assisted in the discharge of its responsibilities by three committees. The committees meet regularly as detailed by the board.

Executive Committee

The committee whose function includes inter alia the recruitment of all senior staff, monitoring and appraisal of performance contracts of the managing director and reviewing all HR policies, meets four times annually and comprised the following:

Mr. Fidelis Kimutai (chairman), Mr. Stanley Mung'athia, Mrs. Judith Mango, Mr. Joseph Sagalla and Mr. J. K. Mwangi.

Business Committee

The committee considers and reviews the Union budgets, disposal of disused capital assets, lines of new products, review of product costing and loan disbursements. Its membership comprised; Mr. Raphael Bukachi (chairman), Prof. Joseph Akeyo, Mr. Weldon Langat, Mrs. Zaffarani Chishenga and Mr. Highway Aywa.

Audit & Budget Committee

The committee is composed of Mr. Elly Oyugi (chairman), Mr. Bonface Makhandia, Mr. George Mwangi Magutu and Mr. Kenneth Kimaiyo (Internal Audit Manager). Their key responsibility is the review of financial information, compliance with accounting standards, and the review of the internal control systems.

Internal Controls

The Union has a well defined organizational structure with appropriate segregation of responsibilities. This is complemented with detailed policy and procedures manual which provide a guiding framework to the management team.

Business Ethics

The Union adheres to the best business practices of integrity, respect and ethics in dealing with all stakeholders. All employees sign a code of ethics upon employment.

Communication with Shareholders

The Union provides information regarding its performance through distribution of annual reports and financial statements on a timely manner.

Top ten shareholders 2008

Name	Number of Shares	% Shareholding
Harambee Sacco	472,300	15.63
Sukari Saccos	98,383	3.28
Kakamega Teachers	94,000	3.11
Kiambu Teachers	72,140	2.39
Meru Mwalimu	61,000	2.01
Kilifi Teachers	58,480	1.94
Nyeri Teachers	50,313	1.67
Kipsigis Teachers	46,617	1.54
KITE	43,071	1.42
Kenya Police	35,762	1.18
Total	1,032,066	34.15

Membership Distribution schedule 2008

Category	No. of Shareholders	Number of Shares	% Shareholding
0-10,000	1976	959,028	31.76
10,001 - 20,000	42	585,648	19.39
20,001 - 30,000	16	382,078	12.65
30,001 - 40,000	3	96,787	3.25
40,001 - 50,000	2	89,688	2.96
50,001 - 60,000	2	108,793	3.60
60,001 - 70,000	1	61,000	2.82
70,001 - 80,000	1	72,140	2.38
80,001 - 90,000	0	0	0
90,001 - 100,000	2	192,383	6.37
More than 100,000	1	472,300	15.63
TOTAL	2,046	3,019,845	100.00

Report of the Directors

The board of directors submits their report together with the audited financial statements for the year ended 31 December 2008, which show the state of the Union's affairs.

1. Principal Activities

The UNION provides Education & Training services, Central Finance Programme, Kuscco housing fund, Sale of stationery, Risk Management services and Business Development, Research and Consultancy services to its members.

2. Results For The Year

	2008	2007
	KSHS '000	KSHS '000
Surplus after tax	6,207	10,372
Statutory reserve	(1,241)	(2,074)
Directors Honorarium	(323)	(608)
	<hr/>	<hr/>
Surplus to reserves	4,643	7,690

3. Board of Directors

F. Kimutai	Chairman	
S. Mung'athia	Vice Chairman	
C. Ademba	Managing Director	
Mrs. J. Mango	Director	
H. Aywah	Director	From - 31/5/2008
J.K. Mwangi	Director	
Mrs. Zaffarani Chishenga	Director	
G. Aseko	Director	Retired-31/5/2008
O. N'jaramba	Director	Retired-31/5/2008
Prof. Akeyo Omolo	Director	
J. Sagalla	Director	
P. Njuguna	Director	Retired-31/5/2008
R. Bukachi	Director	
W. Lang'at	Director	From-31/5/2008
B. Makhandia	Director	From-31/5/2008
G. Magutu	Director	From-31/5/2008
E. Oyugi	Director	From-31/5/2008
J. Ambani	Director	Retired - 31/5/2008

3. Bankers

Co-operative Bank of Kenya: Nairobi, Nakuru, Eldoret, Kisumu, Mombasa, Embu & Nyeri
 Kenya Commercial Bank Ltd -Thika
 Barclays Bank of Kenya-Haile Sellassie Branch Nairobi, NIC Bank

5. Auditors

Kalama & Associates have expressed willingness to continue in office in accordance with section 25(3) of the cooperative societies act No.12 of 1997(2004)

By order of the Board



Carilus Ademba
 Secretary

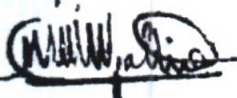
Statement of Directors' Responsibilities.

The Co-operative Societies Act requires the Directors to prepare financial statements for each financial year that give a true and fair view of the state of affairs of Kenya Union of Savings and Credit Co-operatives Limited as at the end of the financial year and of its operating results for that year. It also requires the directors to ensure the Union keeps proper accounting records, which disclose, with reasonable accuracy at any time the financial position of the Union. They are also responsible for safeguarding the assets of the Union.

The Directors accepts responsibility for the annual financial statements, which have been prepared using appropriate accounting policies supported by reasonable and prudent judgments and estimates, in conformity with generally accepted accounting practice and in the manner required by the Co-operative Societies Act. The Directors are of the opinion that the Financial Statement give a true and fair view of the state of the financial affairs of the Union and of its operating results. The Directors further accept responsibility for the maintenance of accounting records, which may be relied upon in the preparation of accounts, as well as adequate systems of internal financial control.

Nothing has come to the attention of the Directors to indicate that the Union will not remain a going concern for at least the next twelve months from the date of this statement.


Chairman.....


Director.....

15/04/2009
Date.....

**REPORT OF THE INDEPENDENT AUDITORS TO THE MEMBERS
C/S 2171 KENYA UNION OF SAVINGS AND CREDIT CO-OPERATIVES LIMITED**

We have audited the financial statements of the Union set out on pages 13 to 31 which have been prepared on the basis of the accounting policies set out on page 17. We have obtained all the information and explanations, which to the best of our knowledge and belief were necessary for the purposes of our audit and to provide a reasonable basis for our opinion. The financial statements are in agreement with the books of account.

RESPECTIVE RESPONSIBILITIES OF MANAGEMENT COMMITTEE AND AUDITORS

As stated out on page 11, under the provisions of the co-operative Societies Act, the Directors are responsible for the preparation of financial statements, which give a true and fair view of the Union's state of affairs and its operating results.

Our responsibility is to express an independent opinion on the financial statements based on our audit and to report our opinion to you.

BASIS OF OPINION

We conducted our audit according to the International Auditing Standards. Those standards require that we plan and perform our audit to obtain reasonable assurance that the financial statements are free from material misstatement. An audit includes an examination, on a test basis, of evidence supporting the amounts and disclosures in the financial statements. It also includes an assessment of the accounting policies used and significant estimates made by the directors, as well as an evaluation of the over all presentation of the financial statements.

OPINION

In our opinion, proper books have been kept and the financial statements give a true and fair view of the state of the Union's affairs as at 31-12-2008 and of the results of its operations and its cash flow for the year then ended in accordance with International financial Reporting Standards, the Cooperative Societies Act and the Union's Bye-laws.

Kalama & Associates

KALAMA AND ASSOCIATES
CERTIFIED PUBLIC ACCOUNTANTS (K)

15/4/2009

Income and Expenditure Accounts
For the Year Ended 31 December 2008

	Notes	2008 Kshs'000	2007 Kshs'000
Operating Income			
Central Finance Programme	3	59,503	66,971
Education and Training	4	4,557	4,624
KUSCCO Housing Fund	5	22,397	17,741
KUSASA-Athi River	6	1,883	1,448
Business Devt. Research & Consultancy	7	389	(199)
Risk Management Services	8	29,527	30,958
Sacco Star	9	2,110	1,152
Stationery	10	144	929
Other incomes	25	28,170	7,718
		148,680	131,341
Operating Expenses			
Staff costs	2	45,630	39,235
Rebates to members		27,179	20,258
Administration	2	67,004	57,031
		139,813	116,524
Operating Surplus Before Taxation		8,867	14,817
Taxation Charge	21	(2,660)	(4,445)
Net Surplus		6,207	10,372

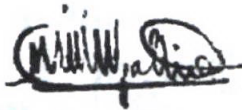
KUSCCO LIMITED
Balance Sheet
As at 31,December 2008

	Notes	2008 Kshs'000	2006 Kshs'000
Cash and Bank Balances	11	68,148	85,878
Account Receivables	12	294,878	269,155
Loans to Members	13	1,785,389	1,497,464
Stocks	14	1,565	1,265
Investments	15	4,873	4,047
Property & Equipment	16	143,111	110,327
Work in Progress	17	622,176	548,190
Total Assets		2,920,140	2,516,326
Bank Overdrafts	19	12,103	6,577
Members deposits	20	2,233,054	1,908,045
Taxation	21	5,242	1,379
Rebates Payable	22	39,488	31,187
Creditors and Accruals	23	20,115	22,770
Long term Liability	24	112,852	110,000
Total Liabilities		2,422,854	2,079,958
Shareholders funds			
Share Capital		301,985	253,228
Reserves		195,301	183,141
Total Shareholders funds		497,286	436,369
Total Liabilities and Shareholders funds		2,920,140	2,516,326

The financial Statements on Pages 4 to 21 were approved for issue by the board of directors on 15/04/2009 and signed on its behalf by:



Fidelis Kimutai
Chairman



Stanley Mung'athia
V. Chairman



Carilus Ademba
Managing Director

Statement of Changes in Equity
For the Year ended 31st December 2008

	Entrance Fee	Share Capital	General Reserves	Statutory Reserves	Risk Mgt. Fund	Retained Earnings	Total
	Kshs'000	Kshs'000	Kshs'000	Kshs'000	Kshs'000	Kshs'000	Kshs'000
At start of the Year 2007	713	164,020	2,934	5,502	149,531	5,928	328,628
Additions during the year 2007	108	-	-	-	-	-	108
Net Surplus	-	-	-	-	-	10,372	10,372
Transfer to Reserves	-	-	-	2,074	70,063	(2,074)	70,063
Directors Honorarium	-	-	-	-	-	(608)	(608)
Rebates	-	-	-	-	(61,404)	-	(61,404)
Shares Issued	-	89,208	-	-	-	-	89,208
Year ended 2007	821	253,228	2,934	7,576	158,190	13,618	436,367
At start of the Year 2008	821	253,228	2,934	7,576	158,190	13,618	436,367
Additions during the year	-	-	-	-	-	-	-
Net Surplus	-	-	-	-	-	6,207	6,207
Transfer to Reserves	-	-	-	1,241	39,133	(1,241)	39,133
Directors Honorarium	-	-	-	-	-	(323)	(323)
Rebates	-	-	-	-	(32,906)	-	(32,906)
Shares Issued	51	48,757	-	-	-	-	48,808
Year ended 2008	872	301,985	2,934	8,817	164,417	18,261	497,286

CASH FLOW STATEMENT

For the year ended 31 December 2008

	Note	2008 Kshs'000	2007 Kshs'000
Net Cash flow from Operating Activities	18	68,005	161,331
Taxation paid		(2,392)	(5,690)
		65,613	155,641
Investing Activities			
Purchase of Property, plant & Equipment		(47,689)	(6,948)
Proceeds on disposal of Property		850	-
Investments		(826)	(790)
WIP		(73,986)	(264,845)
Net Cash from Investing activities		(121,651)	(272,583)
Financing Activities			
Issue of Shares		48,757	89,208
Affiliation Fees		51	108
Cooperative Bank Loan		2,852	34,375
Rebates paid		(18,877)	(9,045)
Net Cash flow from Financing Activities		32,783	114,646
Increase/ (Decrease) in Cash and Equivalents		(23,256)	(2,297)
Opening Cash and Bank Balances		79,301	81,598
Closing Cash and Bank Balances		56,045	79,301

NOTES TO THE FINANCIAL STATEMENTS
For the year ended 31st December 2008

1. SIGNIFICANT ACCOUNTING POLICIES

The principal accounting policies adopted in the preparation of these financial statements are set out below:-

a) Accounting Period

The Union prepares its financial statements covering a period of twelve months ending 31st December every financial year.

b) Accounting Convention

Statement of compliance and basis of preparation

The financial statements are prepared in accordance and comply with International Financial Reporting Standards (IFRS). These financial statements are presented in the functional currency, Kenya Shillings (Kshs) and prepared under the historical cost convention, as modified by revaluation of certain assets as prescribed by IFRS's.

c) New revised standards

i) Adoption of new and revised standards

- IFRIC 12 - Service Concession Agreements
- IFRIC 14 - IAS 19 - The limit on a Defined Benefit Asset, Minimum Funding Requirements and their interaction.

The adoption of the above has no material effect on the Union's accounting policies or disclosure.

ii) New and revised standards and interpretations which have been issued but are not effective

For the period beginning 1st January 2009, 15 International Financial Reporting Standards have been issued with amendments that result in changes in presentation, recognition or measurement principles, while another nine (9) have been amended for editorial or technology changes. In addition, IAS 1 - Presentation of Financial Statements has also been amended. Amendments to IAS 1 will affect the presentation format of the financial statements of the Union due to management approval for early adoption. In addition, the issue of a new standards IFRS 8 - Operating Segments (effective 1st January 2009), amendments to IFRS 3 - Business Combinations (effective 1st July 2009), IFRS 13 - Customer Loyalty Programmes (effective 1st July 2008), IFRIC 15 - Agreements for the Construction of Real Estates (effective 1st January 2009) and IFRIC 16 - Hedge of a Net Investment in a Foreign Operation (effective 1st October 2008) have no any material effect on the Union's accounting policies and disclosures.

d) Revenue Recognition

Interest on loans is charged monthly on reducing balance basis. All other revenues are recognized at the time goods are supplied or services rendered.

E) Property and Equipment

Property and Equipment is stated at cost less accumulated depreciation and any impairment losses. Depreciation is calculated to write off the cost of equipment over their estimated useful lives at the following annual rates:

Leasehold land	Over the remaining lease period.
Buildings	2%
Office Equipment and furniture	12.5%
Computers	30%
Motor vehicles	25%

f) Investments

Unquoted investments held with other institutions are stated at cost. However, when there is a permanent diminution in value of a long-term investment, the carrying amount is reduced accordingly. Dividends on investments are recognized when they become receivable.

G) Members' Deposits

Members' deposits are stated at their nominal value. Interest payable on the members' deposits are accounted for on an accrual basis and are added to the carrying amount of the instruction to the extent that they are not settled in the period in which they arise.

h) Employee Leave Entitlements

The estimated monetary liability for employees accrued annual leave entitlement at the balance sheet date is recognized as an accrued expense.

i) Taxation

Income tax expense represents the sum of the current tax payable. Current tax is provided on the basis of the results for the year as shown on the financial statements adjusted in accordance with the tax legislation.

i) Dividends

Rebates on members' shareholding has been provided at the rate of 9%.

k) Comparatives

Where necessary, comparative figures have been adjusted to conform to changes in presentation in the current year.

l) Stocks

Stocks are stated at the lower of cost and net realizable value. Costs are determined on a First in First Out (FIFO) basis.

m) Statutory Reserve

Transfers are made to the statutory reserve fund at a rate of 20% of net operating surplus after taxation in accordance with section 47 of the Co-operative Societies Act No. 12 of 2004.

n) Interest on Loans to Members

Interest on loans to members is charged on a monthly basis on the reducing balance basis at the following rates:

CFP - 0.96%
KHF - 1.167%

o) Turnover

Turnover represent sale of stationery, annual subscriptions, interest on loans, seminar fees, consultancy fees, income from Risk Services, SACCO Star Magazine, Book Keeping, and KUSASA (FOSA) operations.

p) Currency

The Accounts are expressed in Kenya Shillings.

q) Operating Lease Rental

In line with IAS 17, the UNION has amortized its lease hold land and buildings to be carried at historical cost less amortization over the period of the lease at 3.7%.

r) Loans to Members and Trade Debtors

Loans to members and trade debtors are stated at net realizable value. Provision for bad and doubtful debts is made on loans and debts deemed doubtful and written off when proved to be uncollectible.

s) RMP - Annual Premiums are apportioned as follows:-

	2008	, 2007
	Kshs '000	Kshs '000
Total Annual Premiums	182,520	172,503
Transfers to claims / Rebates (45%)	(82,134)	(77,627)
Transfers to Capital Res. (25%)	(45,630)	(43,125)
Balance to Administration (30%)	<u>54,756</u>	<u>51,751</u>

Notes to the Financial Statements(cont...)

2

	2008 Kshs'000	2007 Kshs'000
Staff Costs		
Salaries and Wages	31,279	28,320
Personnel Expenses	12,689	9,106
Leave in Lieu	1,662	1,808
	45,630	39,234
Administration Expenses		
Office Expenses	8,391	6,071
Rent and Utilities	3,411	3,643
Motor Vehicles Expenses	7,108	5,055
Board of Directors Expenses	5,863	6,913
Repairs and Maintenance	1,938	413
Depreciation	13,526	9,397
Audit fees	580	464
Legal & Professional fees	1,860	1,134
Directors Workshops	1,388	1,379
Annual General Meeting	4,323	2,836
General Finance & Policy	3,952	4,073
Provincial Council Expenses	6,238	7,566
Human Resource Capacity	1,398	120
Provisions for Bad debts	1,864	601
CCD Supervision fees	50	40
Recoverable Expenses	1	1
Disbursements	30	20
Donations & Subscriptions	1,149	1,046
Marketing & Public Relations	2,981	5,009
Rebates	27,179	20,258
Conferences/International Sacco Day	953	1,251
	94,183	77,289

Notes to the Financial Statements(cont...)

3 CENTRAL FINANCE PROGRAM**Income and Expenditure Account
For the Year Ended 31 December 2008****Incomes**Interest on Members Loans
Interest Expense**Net interest income**

Other Income

Total Income**Operating Expenses**Salaries and Wages
Personnel Expenses
Office Expenses
Marketing and Public Relations
Provision for Loan Losses
Motor Vehicle Expenses
Legal Fees
Bank Charges and Interest
Repairs & Maintenance**Total Expenditure****Surplus for the year**

	2008	2007
	Kshs'000	Kshs'000
	152,630	145,495
	(62,295)	(56,961)
	90,335	88,534
	2,383	(3,848)
	92,718	92,382
	8,205	7,586
	962	679
	961	766
	11,344	9,159
	4,800	3,519
	642	239
	680	1,321
	5,307	1,630
	314	512
	33,215	25,411
	59,502	66,971

4 EDUCATION AND TRAINING**Income and Expenditure Account
For the Year Ended 31 December 2008****Income**

Seminar Fees

Operating ExpensesSalaries and Wages
Personnel Expenses
Office Expenses
Motor Expenses
Repairs & Maintenance
Provision for bad debts
Marketing & Public Relations
Financial Charges
Consultancy Fees
Seminar Expenses**Total Expenditure****Surplus for the Year**

	2008	2007
	Kshs'000	Kshs'000
	37,026	36,657
	5,762	3,447
	522	370
	393	686
	571	237
	-	101
	375	375
	655	611
	157	173
	-	45
	24,034	25,989
	32,469	32,033
	4,557	4,624

Notes to the Financial Statements(cont...)

5 KUSCCO HOUSING FUND

Income and Expenditure Account
For the Year Ended 31 December 2008

	2008	2007
	Kshs'000	Kshs'000
Income		
Interest Income	26,834	18,120
Interest Expense	(2,848)	(1,859)
Net Interest income	<u>23,986</u>	<u>16,261</u>
Other Income	2,420	3,312
Total income	<u>26,406</u>	<u>19,573</u>
Operating Expenses		
Salaries & Wages	1,665	441
Personnel Expenses	429	32
Office Expenses	461	210
Motor Expenses	12	207
Bank Charges	286	185
Legal and Public Relations	447	-
Bad debts	600	600
Marketing & Public Relations	109	156
Total Expenses	<u>4,009</u>	<u>1,831</u>
Surplus for the year	<u>22,397</u>	<u>17,742</u>

Notes to the Financial Statements(cont...)

6 KUSASA - ATHI RIVER

Income and Expenditure Account

For the Year Ended 31 December 2008

	2008	2007
	Kshs'000	Kshs'000
Income		
Interest on Loans	5,416	4,933
Net Interest income	(349)	(521)
Net interest income	5,067	4,412
Other Income	2,648	3,235
Total Income	7,715	7,647
Operating Expenses		
Salaries & Wages	1,608	1,149
Personnel Expenses	214	211
Office Expenses	295	823
Rent & Utilities	1,232	1,289
Marketing & Public Relations	120	65
Repairs & Maintenance	370	422
Finance Charges	133	135
Bad debts	265	265
Motor Vehicle Expenses	150	128
Depreciation	571	837
Lease Amortisation	874	874
Total Expenses	5,832	6,199
Surplus/(Deficit)	1,883	1,448

Notes to the Financial Statements(cont...)

7 BUSINESS DEVELOPMENT, RESEARCH & CONSULTANCY

Income and Expenditure Account
For the Year Ended 31 December

	2008	2007
	Kshs'000	Kshs'000
Income		
Consultancy Fees	3,395	2,610
Operating Expenses		
Salaries and Wages	1,492	1,628
Personnel Expenses	685	408
Office Expenses	210	175
Consultancy	250	31
Bad Debts	215	215
Motor Vehicle Expenses	16	95
Bank Charges	13	29
Marketing & PR	125	227
Total Expenditure	3,006	2,810
Surplus/ (Deficit)	389	(199)

8 RISK MANAGEMENT SERVICES

Income and Expenditure Account
For the Year Ended 31 December 2008

	2008	2007
	Kshs'000	Kshs'000
Income		
Management Charges	54,756	51,751
Operating Expenses		
Salaries and Wages	6,069	5,863
Personnel Expenses	630	363
Office Expenses	554	320
Bad debts	2,792	2,792
Marketing & PR Expenses	14,204	10,973
Motor Vehicle Expenses	100	219
Repairs & Maintenance	628	79
Bank Charges	252	184
Total Expenditure	25,229	20,794
Surplus	29,527	30,958

Notes to the Financial Statements(cont...)

9 Sacco Star

INCOME AND EXPENDITURE ACCOUNT
For the Year Ended 31 December 2008

	2008 Kshs'000	2007 Kshs'000
Income		
Income from sales and advertisements	4,347	2,552
	4,347	2,552
Operating Expenses		
Correspondence Fees	54	61
Marketing & Commission	435	135
Wages	589	295
Printing	1,085	893
Office expenses	62	10
Bank Charges	12	7
Total Expenditures	2,237	1,400
Surplus	2,110	1,152

10 STATIONERY

Trading Account
For the Year Ended 31 December 2008

	2008 Kshs'000	2007 Kshs'000
Income		
Sale of Stationery	809	1,148
Cost of sales		
Stocks at 1 January 2008	1,265	629
Purchases	965	855
	2,230	1,484
Stocks at 31 December 2008	(1,565)	(1,265)
	665	219
Surplus	144	929

Notes to the Financial Statements(cont...)

	2008	2007
	Shs.'000	Shs.'000
11 Cash and Cash equivalents		
Cash in hand	479	350
Bank balances	67,669	85,528
	68,148	85,878

12 Account receivables

Trade Debtors	286,295	267,007
Other receivables	8,583	2,148
	294,878	269,155

13 Loans to Members

	C F P		KHF		KUSASA		TOTAL	
	2008	2007	2008	2007	2008	2007	2008	2007
	Kshs'000	Kshs'000	Kshs'000	Kshs'000	Kshs'000	Kshs'000	Kshs'000	Kshs'000
Balance as at 1.1.2008	1,277,822	1,199,249	193,197	118,550	26,444	15,666	1,497,463	1,333,465
Granted during the year	1,312,265	1,034,280	113,352	91,790	17,000	29,811	1,442,617	1,155,881
Repayments	(1,085,036)	(952,188)	(51,912)	(16,543)	(12,079)	(18,768)	(1,149,027)	(987,499)
Provision for loan losses	(4,800)	(3,519)	(600)	(600)	(265)	(265)	(5,665)	(4,384)
	1,500,251	1,277,822	254,037	193,197	31,100	26,444	1,785,388	1,497,463
Due after Next financial Period	1,000,951	753,915	169,358	38,640	20,733	15,602	1,191,042	808,157
Due within Next financial Period	499,300	523,907	84,679	154,557	10,367	10,842	594,346	689,306
Balances End of Year	1,500,251	1,277,822	254,037	193,197	31,100	26,444	1,785,388	1,497,463

	2008	2007
	Shs.'000	Shs.'000
14 Stocks		
Headquarters	1,137	829
Coast	33	33
Mt. Kenya	141	149
Rift Valley	163	163
Western	91	91
	1,565	1,265

15 Investments (Unquoted at Cost)

K N F C	20	20
Co-operative Bank Shares of 100/-	1,309	1,309
Co-operative Insurance Services	159	159
CODIC	50	50
IRNET Coop Kenya	3,335	2,509
	4,873	4,047

Notes to the Financial Statements(cont...)

16 Property & Equipment

Cost/Valuation	Free hold Land Kshs'000	Lease hold Land Kshs'000	Buildings Kshs'000	Furn; Fixt. & Fittings Kshs'000	Office Equipment Kshs'000	Motor Vehicles Kshs'000	Computers Kshs'000	Total Kshs'000
At 1/1/2008	11,500	79,497	18,182	7,843	8,279	19,112	15,856	160,269
Additions during the year	-	-	-	34,381	872	8,703	4,321	48,277
Disposal during the year	-	-	-	-	-	(2,200)	-	(2,200)
As at 31/12/2008	11,500	79,497	18,182	42,224	9,151	25,615	20,177	206,346

Depreciation/ Amortisation

At 1/1/2008	-	18,890	4,355	4,406	4,799	9,006	8,486	49,942
Charge for the period	-	3,003	662	4,727	544	2,526	3,507	14,971
Relating to disposal	-	-	-	-	-	(1,678)	-	(1,678)
As at 31/12/2008	-	21,893	5,017	9,133	5,343	9,854	11,993	63,235

Net Book Amount

As at 31/12/2008	11,500	57,603	13,165	33,091	3,808	15,760	8,184	143,111
As at 31/12/2007	11,500	60,607	13,827	3,437	3,480	10,106	7,370	110,327

Depreciation/amortisation relating to KUSASA

	2008 Shs.'000	2007 Shs.'000
Lease amortisation	874	874
Depreciation	571	910
	1,445	1,784

Notes to the Financial Statements(cont...)

	2008	2007
	Kshs'000	Kshs'000
17 Work in Progress (Kuscco Centre)		
At 1 st January	548,190	283,345
Additions	73,986	264,845
At 31 st December	<u>622,176</u>	<u>548,190</u>
18 Notes to the Cashflow Statement		
<u>Cashflow from Operating activities</u>		
Surplus before taxation	8,867	14,817
Adjusted for:	-	
Depreciation/ Amortization	13,293	11,181
Bad Debts Provision	9,630	8,367
Provision for rebates	27,179	20,258
Profit/(Loss) on sale of fixed assets	(328)	-
(Increase) / Decrease in Member loans	(286,963)	(164,313)
Increase in member deposits	325,005	214,349
Surplus before working capital changes	<u>96,683</u>	<u>104,659</u>
Working capital changes:		
(Decrease) / Increase in Payables	(2,655)	9,667
(Increase) / Decrease in Stocks	(300)	(636)
(Increase) / decrease in Receivables	(25,723)	47,640
	<u>(28,678)</u>	<u>56,671</u>
Net cash flow after working capital changes	<u>68,005</u>	<u>161,330</u>

Notes to the Financial Statements(Cont...)

	2008 Kshs'000	2007 Kshs'000
19 Bank Overdraft (At Cooperative Bank)	12,103	6,577
20 Member Deposits		
CFP	2,040,700	1,763,349
KHF	170,797	131,474
KUSASA-Athi River	21,557	13,222
	2,233,054	1,908,045
21 Taxation		
Balance at 1 January 2008	1,379	2,624
Charge for the Year	2,660	4,445
Adjustments	3,595	-
Payments during the year	(2,392)	(5,690)
Balance at 31 December, 2008	5,242	1,379
22 Rebates		
At Start of Year	31,187	19,973
During the year	27,179	20,258
Payments	(18,877)	(9,045)
At year end	39,489	31,186
23 Creditors and Accruals-		
Trade Creditors	19,792	21,971
Others Creditors	323	799
	20,115	22,770
24 Long Term Liabilities		
Cooperative Bank Loan		
Current Portion -Due Within 12 months	37,617	20,586
Due after 12 months	75,235	89,414
	112,852	110,000
25 Other Incomes		
Gain on disposal of fixed assets	328	-
Annual subscriptions	6,616	6,531
Book keeping fees	65	251
Rent Income	20,524	-
Miscellaneous income	637	936
	28,170	7,718

Notes to the Financial Statements(Cont...)

26. Critical Accounting Judgments and Key Sources of Estimation Uncertainty

In the process of applying the Union's accounting policies, management has made estimates and assumptions that affect the reported amounts of assets and liabilities within the next financial year. Estimates and judgments are continually evaluated and are based on historical experience and other factors, including expectations of future events that are believed to be reasonable under the circumstances.

Impairment losses on loans and advances

The Union reviews its loan portfolios to assess impairment regularly. In determining whether an impairment loss should be recorded in the income statement, the Union makes judgments as to whether there is any observable data indicating that there is a measurable decrease in the estimated future cash flows from a portfolio of loans before a decrease can be identified with an individual loan in that portfolio.

27. Financial Risk Management

The Union activities expose it to a variety of financial risks, credit risks and the effects changes in property values, debt and equity market prices and interest rates. The Union's risk management policies are established to identify and analyze the risks faced by the Union, to set appropriate risk limits and controls, and to monitor risks and adherence to limits. Risk management policies and systems are reviewed regularly to reflect changes in market conditions, products and services offered. The audit and budget Committee is responsible for monitoring compliance with the Union's risk management policies and procedures, and for reviewing the adequacy of the risk management framework in relation to the risks faced by the Union

The Union manages the following key financial risks

a) Credit Risk

The Union faces credit risk if members fail to meet their contractual obligations, and arises principally from the Union's loans and advances to members. The board of directors has delegated responsibility for the management of credit risk to the Audit and Budget Committee. The Audit and Budget Committee is responsible for oversight of the Union's credit risk, including:

- Formulating credit policies, covering collateral requirements, credit assessment, risk grading and reporting, documentary and legal procedures, and compliance with regulatory and statutory requirements.
- Establishing the authorization structure for the approval of credit facilities. Authorization limits are allocated to Managers. Ratification is by the board of directors.
- Reviewing compliance of business units with agreed exposure limits, including those for selected product types.
- Providing advice, guidance and specialist skills to promote best practice throughout the Union in the management of credit risk.

Notes to the Financial Statements(Cont...)

Impaired loans and securities

Impaired loans and securities are loans and securities for which the Union determines that it is probable that it will be unable to collect a part/whole of principal and interest due according to the contractual terms of the loan(s).

Past due but not impaired loans

Loans where contractual interest or principal payments are past due but the Union believes that impairment is not appropriate on the basis of the level of security /collateral available and or the stage of collection of amounts owed to the Union.

(i) Allowances for impairment

The Union sets aside from its income an allowance for impairment losses that represents its estimate of incurred losses in its loan portfolio. The main component of this allowance is a specific loss component that relates to each defaulting borrower, and a collective loan loss allowance established for groups of homogeneous assets in respect of losses that have been incurred but have not been identified on loans subject to individual assessment for impairment.

(ii) Write-off policy

The Union writes off a loan balance (and any related allowances for impairment losses) when the Credit Committee determines that the loans are uncollectible. This determination is reached after considering information such as the occurrence of significant changes in the borrower's financial position such that the borrower can no longer pay the obligation, or that proceeds from deposits will not be sufficient to pay back the entire exposure.

(iii) Collateral held

The Union holds collateral against loans and advances to employees taking car loans. Estimates of fair value are based on the value of collateral assessed at the time of borrowing, and generally are not updated except when a loan is individually assessed as impaired.

(iv) Settlement risk

The Union's activities may give rise to risk at the time of settlement of transactions and trades. Settlement risk is the risk of loss due to the failure of a borrower to honor its obligations to bank orders or pay up as contractually agreed.

b) Liquidity Risk

The Union is exposed to the risk that it will encounter difficulty in raising funds to meet commitments associated with financial instruments as they fall due and to replace funds when they are withdrawn. Liquidity risk is addressed through the following measures:

(i) Management of liquidity risk

The Union's approach to managing liquidity is to ensure, as far as possible, that it will always have sufficient liquidity to meet its liabilities when due, under both normal and stressed conditions, without incurring unacceptable losses or risking damage to the Union's reputation.

Notes to the Financial Statements(Cont...)***(li) Exposure to liquidity risk***

The management manages the day to day operations, ascertains adequacy of funds to meet the Union's obligations, advises on pricing of assets and liabilities, and prepares cash flow projections to ensure the Union's liquidity is within acceptable limits, monitors maturities of assets and liabilities and finally advises on placements and liquidations as appropriate. The Board of Directors may increase liquidity requirements from time to time in order to meet cash demands.

c) Market Risk

The Union is exposed to market risk that changes in market prices, such as interest rate, equity prices and Credit spreads will affect the Union's income or the value of its holdings of financial instruments. The objective of market risk management is to manage and control market risk exposures within acceptable parameters, while optimizing the return on risk.

Management of market risks

Overall authority for market risk is vested in the Executive Committee. The audit and budget Committee is responsible for the development of detailed risk management policies, as reviewed and approved by the Board of Directors and for the day-to-day review of their implementation.

The Union also holds interest bearing assets in form of short term deposits with banks and other institutions. The Union also has borrowings in the form of loans and overdrafts at rates agreed in the contract but subject to change in line with prevailing market conditions.

e) Operational Risk

Operational risk is the risk of direct or indirect loss arising from a wide variety of causes associated with the Union's processes, personnel, technology and infrastructure, and from external factors other than credit, market and liquidity.

The Union's objective is to manage operational risk so as to balance the avoidance of financial losses and damage to the Union's reputation with overall cost effectiveness and to avoid control procedures that restrict initiative and creativity.

f) Capital Management

The Co-operatives Act sets and monitors capital requirements for the Union as a whole. The requirements are outlined in the Union's by-laws which comply with the requirements of the Cooperatives Act. The Union's objectives when managing capital, which is a broader concept than the 'equity' on the face of balance sheet, are:

- To have sufficient capital to support its development mandate
- To safeguard the Union's ability to continue as a going concern so that it can continue to Provide returns for members and other stakeholders; and
- To maintain a strong capital base to support the development of the Union.

28. Incorporation

The Union is incorporated under the cooperative Societies Act and is domiciled in Kenya

SENIOR MANAGEMENT TEAM



P. Orau
Finance Manager



C. Ademba
Managing Director



E. Mngoda
Manager Central Finance



K. Kimaiyo
Manager - Internal Audit



J. Ole Nkiti
Manager - Education & Training



I. Kimathi
Manager -
Business Devt. Research & Consultancy



C. Magua
Manager - Corporate Affairs & Marketing



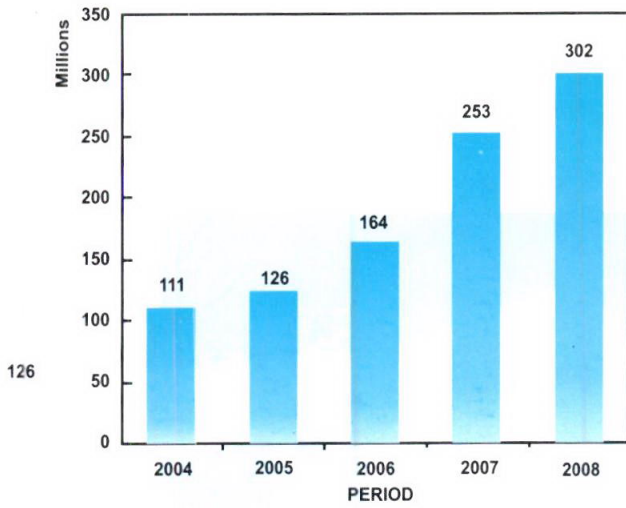
J. Aguko
Manager - Kuscco Housing Fund



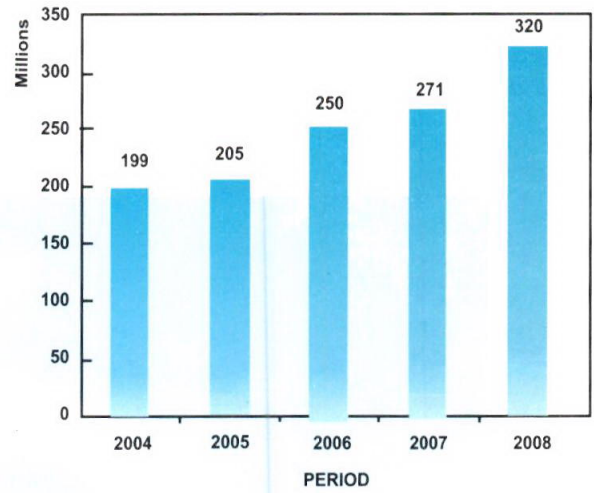
R. Wafula
Manager - Risk Management Services

KUSCCO LTD GROWTH TREND ANALYSIS (PERIOD 2004 - 2008)

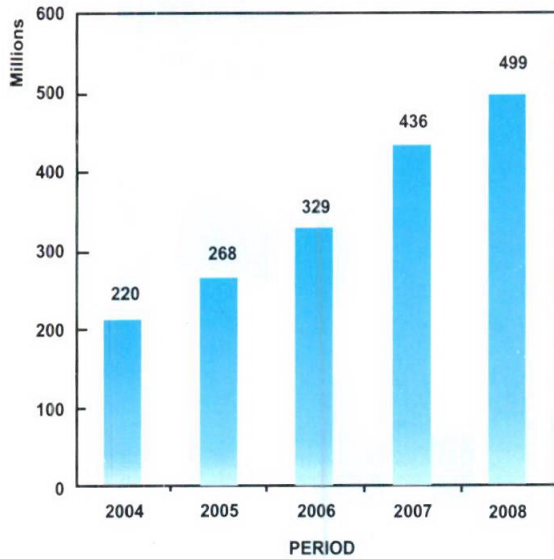
CAPITALIZATION (Kshs.)



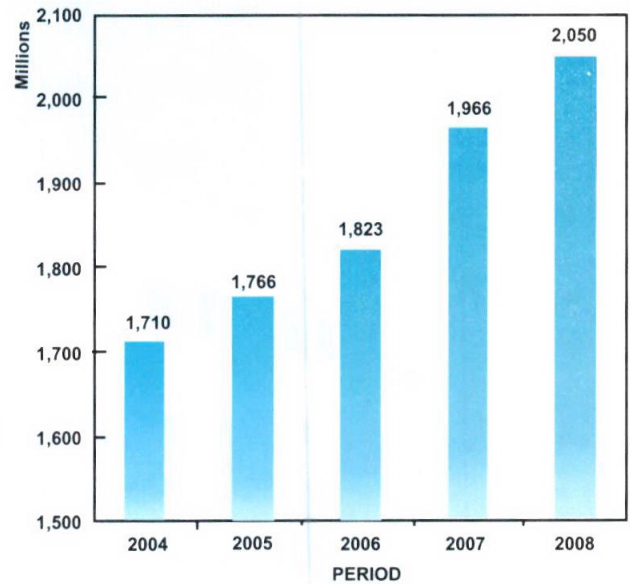
TURNOVER



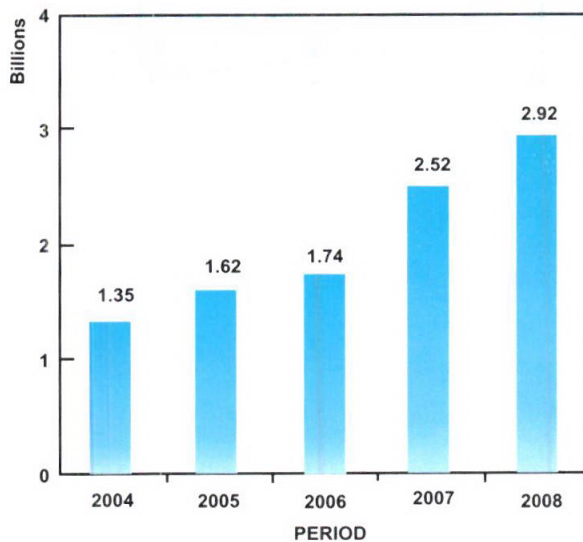
EQUITY (Kshs.)



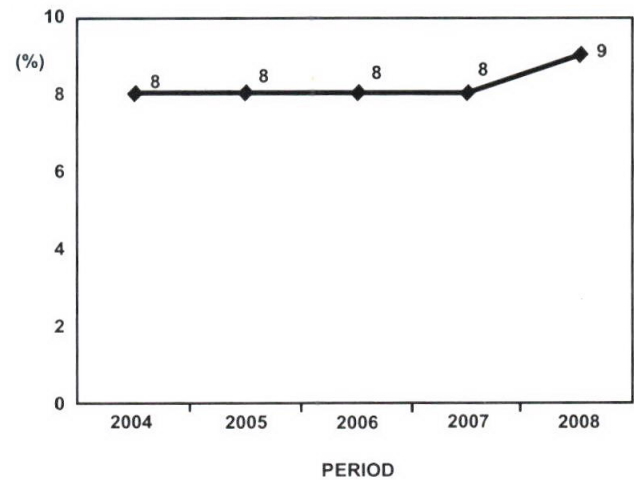
MEMBERSHIP



TOTAL ASSETS (Kshs.)



DIVIDEND





CORPORATE INFORMATION

Registered Office:

✦ Kuscco Centre, Kilimanjaro Ave.
Off Mara Road Upper Hill
P.O. Box 28403 - 00200
00200 City Square, NAIROBI
Tel: 254-020-2730191 / 2722927
Fax: 254-020-2721274
Email: info@kuscco.com

✦ **Coast Regional Office**
Kitumbo Road
P.O. Box 85113, MOMBASA
Tel: (041) 2311465 / 2317913

✦ **Western Kenya Regional Office**
Milimani Area
Nzoia Road, off Nairobi Road
P.O. Box 193, KISUMU
Tel: (057) 2024563

✦ **Rift Valley Regional Office**
AFC House, 2nd Floor
P.O. Box 2077, NAKURU
Tel: (051) 2211362

✦ **Mt. Kenya Regional Office**
Mugo & Gatungo Bld. (Bata Hse)
2nd Floor
P.O. Box 1143, EMBU
Tel: (068) 31698

KUSCCO Sub Centres

✦ **Eldoret Sub-Centre**
P.O. Box 3124, Eldoret
Tel: (053) 2031923

✦ **Kisii Sub-Centre**
P.O. Box 1927, Kisii
Tel: (058) 30735

✦ **Thika Sub-Centre**
P.O. Box 1494, Thika
Tel: (067) 22819

✦ **Kakamega Sub-Centre**
P.O. Box 1624, Kakamega
Tel: (056) 2030073

✦ **Athi River Sub-Centre**
Mbuvi Hse
P.O. Box 468, Athi River
Tel: (045) 26390/1

✦ **Nyeri Sub-Centre**
P.O. Box 1601, Nyeri
Tel: (061) 30933

✦ **Meru Sub-Centre**
P.O. Box 2266 Meru
Tel: (064) 31655

