

**KENYA NATIONAL ASSEMBLY**

**SIXTH PARLIAMENT - (FOURTH SESSION)**

LIST OF MINISTERS AS AT 29TH JANUARY, 1992

- |   |   |
|---|---|
| The President<br>P.O. Box 30510<br><u>NAIROBI</u>   | (His Excellency The Hon. D.T. arap<br>Moi, C.G.H., M.P.)  |
| The Vice-President and<br>Minister for Finance<br>P.O. Box 30007<br><u>NAIROBI</u>                      | (His Excellency The Hon.(Prof)<br>G. Saitoti, E.G.H., M.P.)   |
| The Minister for Health<br>P.O. Box 30016,<br><u>NAIROBI.</u>   | (The Hon. J.J.Nyagah, E.G.H., M.P.)   |
| The Minister for Foreign<br>Affairs & International<br>Co-operation<br>P.O. Box 30551<br><u>NAIROBI</u> | (The Hon. Ndolo Ayah, E.G.H., M.P.)   |
| The Minister for Commerce<br>P.O. Box 30430<br><u>NAIROBI</u>   | (The Hon. A.K. Magugu, E.G.H., M.P.)  |
| The Minister for Agriculture<br>P.O. Box 30028,<br><u>NAIROBI.</u>                                      | (The Hon. E.U. Mwangale, E.G.H., M.P.)  |
| The Minister of State,<br>Office of the President<br>P.O. Box 30510<br><u>NAIROBI.</u>                  | (The Hon. H.M. Mohamed, E.G.H., M.P.)<br>(The Hon. J.H. Angaine, E.G.H., M.P.)<br>(The Hon. J.K. Ngutu, M.P.)<br>(The Hon. W. Kanyi Waithaka, M.P.) |
| The Minister for Transport &<br>Communications<br>P.O. Box 52692<br><u>NAIROBI</u>                      | (The Hon. D.A. Otieno, E.G.H., M.P.)  |
| The Minister for Education<br>P.O. Box 30040<br><u>NAIROBI.</u>   | (The Hon. J.J. Kanotho, E.G.H., M.P.)   |



The Minister for Labour  
P.O. Box 40326  
NAIROBI.

(The Hon. P.S.J. Nasinde, M.P.)

The Minister for Tourism and  
Wildlife  
P.O. Box 30027  
NAIROBI.

(The Hon. H.K. Ngala, E.G.H., M.P.)

The Minister for Planning &  
National Development  
P.O. Box 30007,  
NAIROBI.

(The Hon. (Dr) Z.T. Onyonka, E.G.H.,  
M.P.)

The Minister for Water  
Development  
P.O. Box 49720  
NAIROBI.

(The Hon. J.H. Okwanyo, E.G.H., M.P.)

The Minister for Regional  
Development  
P.O. Box 30532  
NAIROBI.

(The Hon. M. Onyango Ndika, E.G.H.,  
M.P.)

The Minister for Culture &  
Social Services  
P.O. Box 45958  
NAIROBI.

(The Hon. J.M. Ujiru, E.G.H., M.P.)

The Minister for Information  
and Broadcasting  
P.O. Box 30025  
NAIROBI.

(The Hon. Burudi Nabwera, E.G.H., M.P.)

The Minister for Lands and  
Housing  
P.O. Box 30450  
NAIROBI.

(The Hon. D.M. Mbela, E.G.H., M.P.)

The Minister for Technical  
Training & Applied  
Technology  
P.O. Box 30040  
NAIROBI.

(The Hon. (Prof) S.K. Ong'eri, E.G.H.,

The Minister for Reclamation  
and Development of Arid, Semi-  
Arid and Wasteland  
P.O. Box 30746  
NAIROBI.

(The Hon. G.M. Ndotto, E.G.H., M.P.)



- The Minister for Co-operative Development  
P.O. Box 30547  
NAIROBI. (The Hon. J.K.Cheruiyot, E.G.H., M.P.)
  
- The Minister for Local Government  
P.O. Box 30004  
NAIROBI. (The Hon. W.R.ola Ntimama, E.G.H., M.P.)
  
- The Minister for Home Affairs and National Heritage  
P.O. Box 30520  
NAIROBI. (The Hon. D.N.Kuguru, E.G.H., M.P.)
  
- The Minister for Public Works  
P.O. Box 30260  
NAIROBI. (The Hon. T. Mibai, E.G.H., M.P.)
  
- The Minister for Supplies and Marketing  
P.O. Box 34889  
NAIROBI (The Hon. W.M. Hudavadi, E.G.H., M.P.)
  
- The Minister for Energy  
P.O. Box 30582,  
NAIROBI. (The Hon. J. Kyalo, M.P.)
  
- The Minister for Industry  
P.O. Box 30418  
NAIROBI (The Hon. F.O. Kaparo, M.P.)
  
- The Minister for Livestock Development  
P.O. Box 30028  
NAIROBI (The Hon. J.K. Muregi, M.P.)
  
- The Minister for Environment and Natural Resources  
P.O. Box 30126  
NAIROBI. (The Hon. P. Leakey, M.P.)
  
- The Minister for Research, Science & Technology  
P.O. Box 30623,  
NAIROBI. (The Hon. K.L.H.Mukindia, M.P.)
  
- The Minister for Manpower Development & Employment  
P.O. Box 30201  
NAIROBI. (The Hon. (Arch.) S.Ondiek Oluoch, M.P.)



Faint, illegible text at the top of the page, possibly a header or title.

Faint, illegible text in the upper middle section of the page.

Faint, illegible text in the middle section of the page.

Faint, illegible text in the middle section of the page.

Faint, illegible text in the middle section of the page.

Faint, illegible text in the middle section of the page.

Faint, illegible text in the middle section of the page.

Faint, illegible text in the middle section of the page.

Faint, illegible text in the middle section of the page.

Faint, illegible text in the middle section of the page.

Faint, illegible text at the bottom of the page, possibly a footer.

LIST OF ASSISTANT MINISTERS AS AT 29TH JANUARY, 1992.

Office of the President P O Box 30510 <u>NAIROBI</u>	(The Hon. D.A. Onyancha, M.P.) (The Hon. W. Kamuren, M.P.) (The Hon. (Dr.) B.A. Godana, M.P.) (The Hon. (Dr) Wameyo, M.P.)
Office of the Vice-President & Ministry of Finance P.O. Box 30007, <u>NAIROBI.</u>	(The Hon. M.B. Keah, M.P.) (The Hon. L.N. Kariuki, M.P.)
Ministry of Health P.O. BOX 30016, <u>NAIROBI</u>	(The Hon. Ochola Ogur, M.P.) (The Hon. F.O. Sompisha, M.P.)
Ministry of Environment & Natural Resources P O Box 30126 <u>NAIROBI</u>	(The Hon. S. Hemed, M.P.) (The Hon. J.K. Muregi, M.P.) (The Hon. O. K'Ombudo, M.P.)
Ministry of Culture & Social Services P O Box 459558 <u>NAIROBI</u>	(The Hon. C.M. Lomada, M.P.) (The Hon. (Mrs) G. Ogot, M.P.) (The Hon. Kamwithi Munyi, M.P.) (The Hon. M.O. Ogingo, M.P.)
Ministry of Foreign Affairs and International Co-operation P O Box 30551 <u>NAIROBI</u>	(The Hon. J. Muliuro, M.P.) (The Hon. C.M. Obure, M.P.) (The Hon. Ali Bidu, M.P.)
Ministry of Manpower Development & Employment P O Box 30201 <u>NAIROBI</u>	(The Hon. S. Lugonzo, M.P.) (The Hon. P.A. Otwani, M.P.)
Ministry of Energy P O Box 30582 <u>NAIROBI</u>	(The Hon. N. Moturi, M.P.) (The Hon. K.L. M'Mukindia, M.P.)
Ministry of Local Government P O Box 30004 <u>NAIROBI</u>	(The Hon. J.E. Mbori, M.P.) (The Hon. Kimondo Wagura, M.P.)
Ministry of Agriculture P O Box 30028 <u>NAIROBI</u>	(The Hon. K.K. Kones, M.P.) (The Hon. G. Ngaruro, M.P.) (The Hon. J.M. Gachui, M.P.)

1917  
The following is a list of the names of the persons who were members of the  
Board of Directors of the [Company Name] during the year 1917.  
The names are listed in alphabetical order.  
[List of names follows, including: J. H. [Name], W. B. [Name], C. E. [Name], etc.]

Ministry of Transport &  
Communications  
P O Box 52692  
NAIROBI

(The Hon. P.N. Hbali, M.P.)  
(The Hon. (Dr.) P. K. Nomanayi, M.P.)  
(The Hon. F. Mutwol, M.P.)

Ministry of Livestock  
Development  
P.O. Box 30028  
NAIROBI

(The Hon. (Dr.) N.W. Wekesa, M.P.)  
(The Hon. R. Chesire, M.P.)  
(The Hon. P.L. Hang'ole, M.P.)

Ministry of Labour  
P O Box 40326  
NAIROBI

(The Hon. K.F.X. ole Kaparo, M.P.)  
(The Hon. D.M. Amin, M.P.)

Ministry of Education  
P O Box 30040  
NAIROBI

(The Hon. F.E. Onido, M.P.)  
(The Hon. M.A. Kerauri, M.P.)  
(The Hon. L.O. Amayo, M.P.)

Ministry of Co-operative  
Development  
P.O. Box 30547,  
NAIROBI.

(The J.N. Karung, M.P.)

Ministry of Planning &  
National Development  
P O Box 30027  
NAIROBI

(The Hon. M.A. Ogle, M.P.)  
(The Hon. V.S. M'Maitsi, M.P.)

Ministry of Tourism &  
Wildlife  
P O Box 30027  
NAIROBI

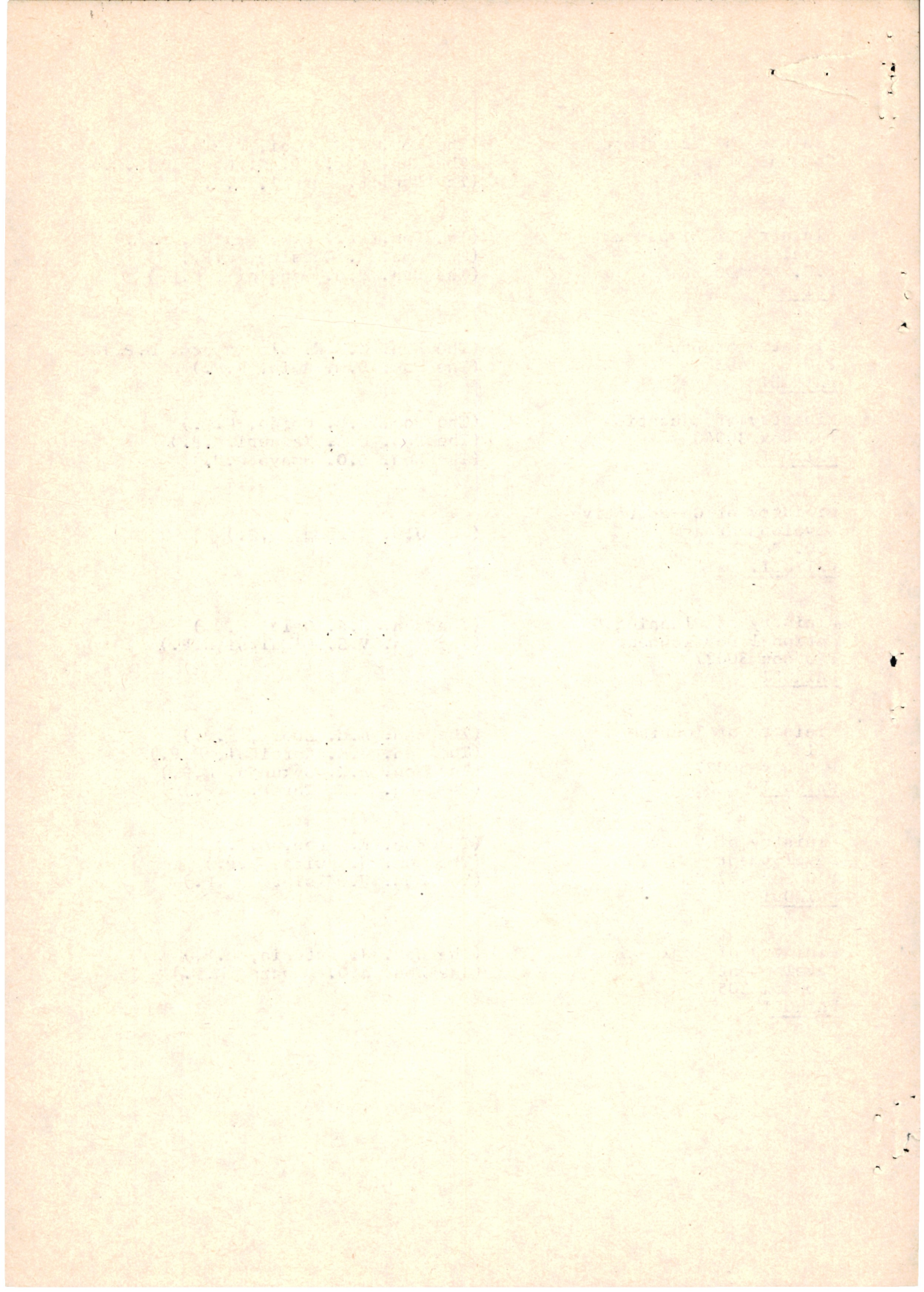
(The Hon. A.H. Awori, M.P.)  
(The Hon. G.K. Kareithi, M.P.)  
(The Hon. Z.K. Gakunju, M.P.)  
(The Hon. J.K. Terer, M.P.)

Ministry of Water  
Development  
P O Box 49720  
NAIROBI

(The Hon. E. Mweu, M.P.)  
(The Hon. W. Mwita, M.P.)  
(The Hon. W. Kisiero, M.P.)

Ministry of Regional  
Development  
P O Box 30582  
NAIROBI

(The Hon. J. Muturia, M.P.)  
(The Hon. J.O. Okwara, M.P.)



Ministry of Information  
and Broadcasting  
P O Box 30025  
NAIROBI

(The Hon. Shariff Nassir, M.P.)  
(The Hon. A.M. Kachila, M.P.)  
(The Hon. W.M. Kimani, M.P.)  
(The Hon. J.L. Lijoodi, M.P.)

Ministry of Public Works  
P O Box 30260  
NAIROBI

(The Hon. S. Ondiek Oluoch,  
M.P.)  
(The Hon. W.M. Njururi, M.P.)

Ministry of Lands &  
Housing  
P O Box 30450  
NAIROBI

(The Hon. E.K. Bonett, M.P.)  
(The Hon. G. Mutiso, M.P.)

Ministry of Technical  
Training & Applied Technology  
P O Box 30040  
NAIROBI

(The Hon. P. Leakey, M.P.)  
(The Hon. F.M. Thuo, M.P.)

Ministry of Research  
Science & Technology  
P O Box 30623  
NAIROBI

(The Hon. G.K. M'bijjiwe, M.P.)  
(The Hon. (Dr) G.P. Oluoch,  
M.P.)

Ministry of Industry  
P O Box 30418  
NAIROBI

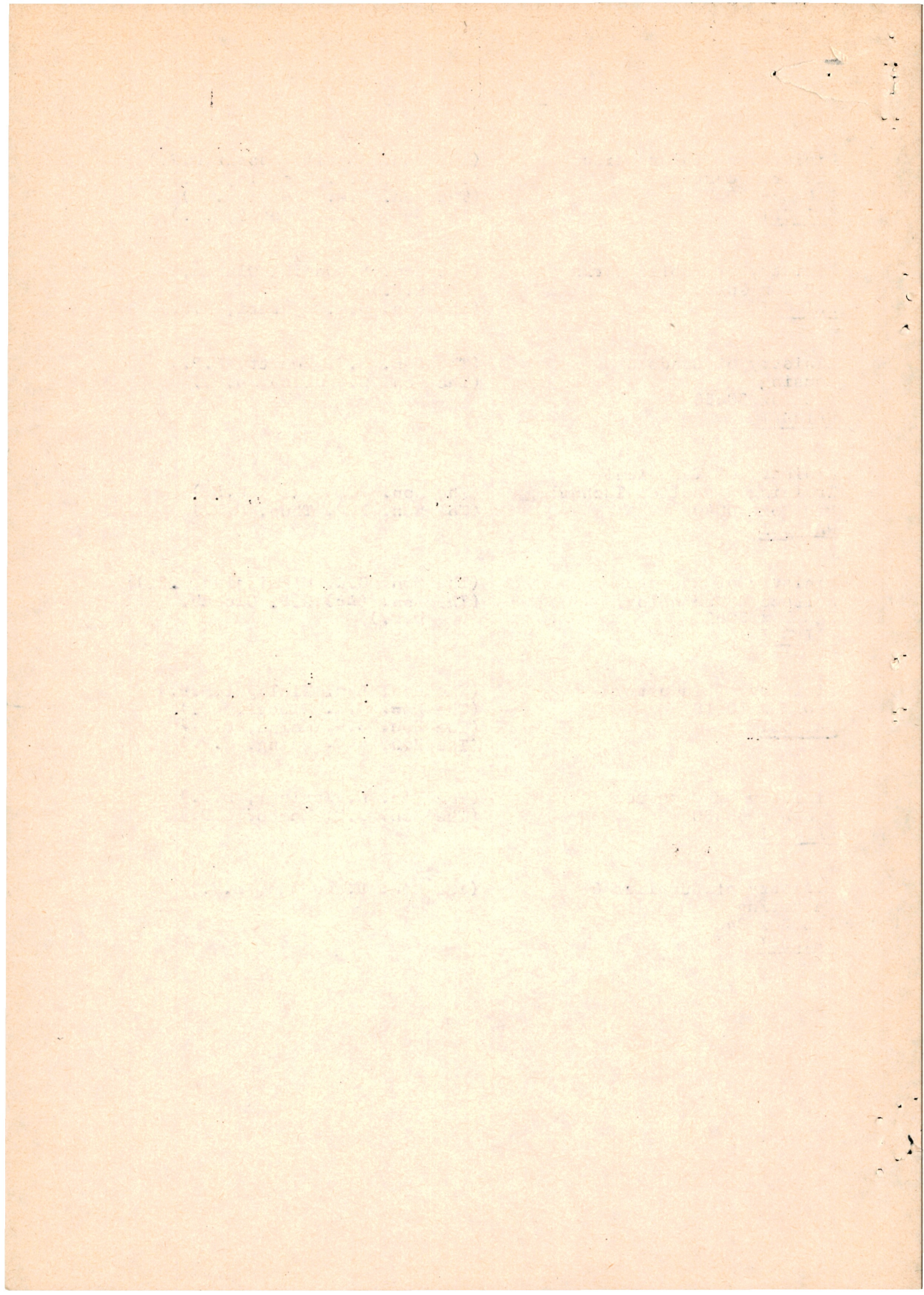
(The Hon. Lawi Kiplagat, M.P.)  
(The Hon. W.K. Kibugi, M.P.)  
(The Hon. Z.W. Maina, M.P.)  
(The Hon. R.O. Ndong, M.P.)

Ministry of Commerce  
P O Box 30430  
NAIROBI

(The Hon. M. Karingi, M.P.)  
(The Hon. D.D. Kambo, M.P.)

Ministry of Supplies &  
Marketing  
P O Box 34839  
NAIROBI

(The Hon. D. Iwanja, M.P.)



Ministry of Reclamation &  
Development of Arid, Semi -  
Arid and Wasteland  
P.O Box 30746  
NAIROBI.

(The Hon. C.G. Hokku, M.P.)  
(The Hon. P.C.J.O. Nyakiano, M.P)

Ministry of Home Affairs &  
National Heritage  
P O Box 30520  
NAIROBI

(The Hon. J. Lalapaa, M.P.)  
(The Hon. A.E. Nooru, M.P.)  
(The Hon. A.J. Omanga, M.P.)

1864

1865

1866





Arte, The Hon. U.M., M.P.  
National Assembly  
P O Box 41842  
NAIROBI

IJARA

Awori, The Hon. A.H., M.P.  
P O Box 47756  
NAIROBI

SANIA

Ayah, The Hon. W.N., M.P.  
National Assembly  
P O Box 41842  
NAIROBI

KISUMU RURAL

Bidu, The Hon. A.A., M.P.  
P O Box 86500  
MOBEASA

KINANGO

Biwott, The Hon. K.H.K., M.P.  
National Assembly  
P O Box 41842  
NAIROBI

KERIO SOUTH

Bomett, The Hon. E.K.K., M.P.  
P O Box 55  
RONGAI

RONGAI

Boy, The Hon. E.J., M.P.  
National Assembly  
P O Box 41842  
NAIROBI

MATUGA

Bujra, The Hon. A.A., M.P.  
P O Box 1  
WITU (LAMU)

LAMU WEST

Bulyaar, The Hon. S.M., M.P.  
National Assembly  
P O Box 41842  
NAIROBI.

LAISAMIS

1941

1942

1943

1944

1945

1946

1947

1948

1949

...

...

...

...

...

...

...

...

...

Chepkok, The Hon. P.R., M.P.  
P O Box 379  
ITEN

KERIO CENTRAL

Chepkwony, The Hon. A., M.P.  
National Assembly  
P O Box 41842  
NAIROBI

BELGUT

Cheruiyot, The Hon. J.K., M.P.  
National Assembly  
P O Box 41842  
NAIROBI

ALDAI

Cheshire, The Hon. R.K., M.P.  
P O Box 1320  
ELDORET

ELDORET NORTH

(V A C A N T)

TURKANA CENTRAL (VACANT)

Ekidor, The Hon. J.L., M.P.  
National Assembly  
P O Box 41842  
NAIROBI

TURKANA NORTH

Falana, The Hon. J.J., M.P.  
National Assembly  
P O Box 41842  
NAIROBI

SAKU

Gachui, The Hon. J.H., M.P.  
P O Box 43961  
NAIROBI

GATANGA

Gakunju, The Hon. Z.K., M.P.  
P O Box 74414  
NAIROBI

GATUNDU

1. THE STATE OF NEW YORK  
 2. IN SENATE  
 3. AND ASSEMBLY  
 4. OF THE STATE OF NEW YORK  
 5. FOR THE SESSION OF 1880  
 6. AND FOR THE SESSION OF 1881  
 7. AND FOR THE SESSION OF 1882  
 8. AND FOR THE SESSION OF 1883  
 9. AND FOR THE SESSION OF 1884  
 10. AND FOR THE SESSION OF 1885  
 11. AND FOR THE SESSION OF 1886  
 12. AND FOR THE SESSION OF 1887  
 13. AND FOR THE SESSION OF 1888  
 14. AND FOR THE SESSION OF 1889  
 15. AND FOR THE SESSION OF 1890  
 16. AND FOR THE SESSION OF 1891  
 17. AND FOR THE SESSION OF 1892  
 18. AND FOR THE SESSION OF 1893  
 19. AND FOR THE SESSION OF 1894  
 20. AND FOR THE SESSION OF 1895  
 21. AND FOR THE SESSION OF 1896  
 22. AND FOR THE SESSION OF 1897  
 23. AND FOR THE SESSION OF 1898  
 24. AND FOR THE SESSION OF 1899  
 25. AND FOR THE SESSION OF 1900

(1880) (1881) (1882) (1883) (1884) (1885) (1886) (1887) (1888) (1889) (1890) (1891) (1892) (1893) (1894) (1895) (1896) (1897) (1898) (1899) (1900)

Galgallo, The Hon. M.A., M.P.  
P O Box 2030  
NOLA

GALOLE

Godana, The Hon. B.A. (Dr.), M.P.  
National Assembly  
P O Box 41842  
NAIROBI

NORTH HORN

Godana, The Hon. P.G., M.P.  
National Assembly  
P O Box 41842  
NAIROBI

MOYALE

Jalang'o, The Hon. B.F., M.P.  
P O Box 41553  
NAIROBI

RARIEDA

Jaldessa, The Hon. D., M.P.  
National Assembly  
P O Box 41842  
NAIROBI

ISIOLO SOUTH

Kachila, The Hon. A.M., M.P.  
National Assembly  
P O Box 41842  
NAIROBI

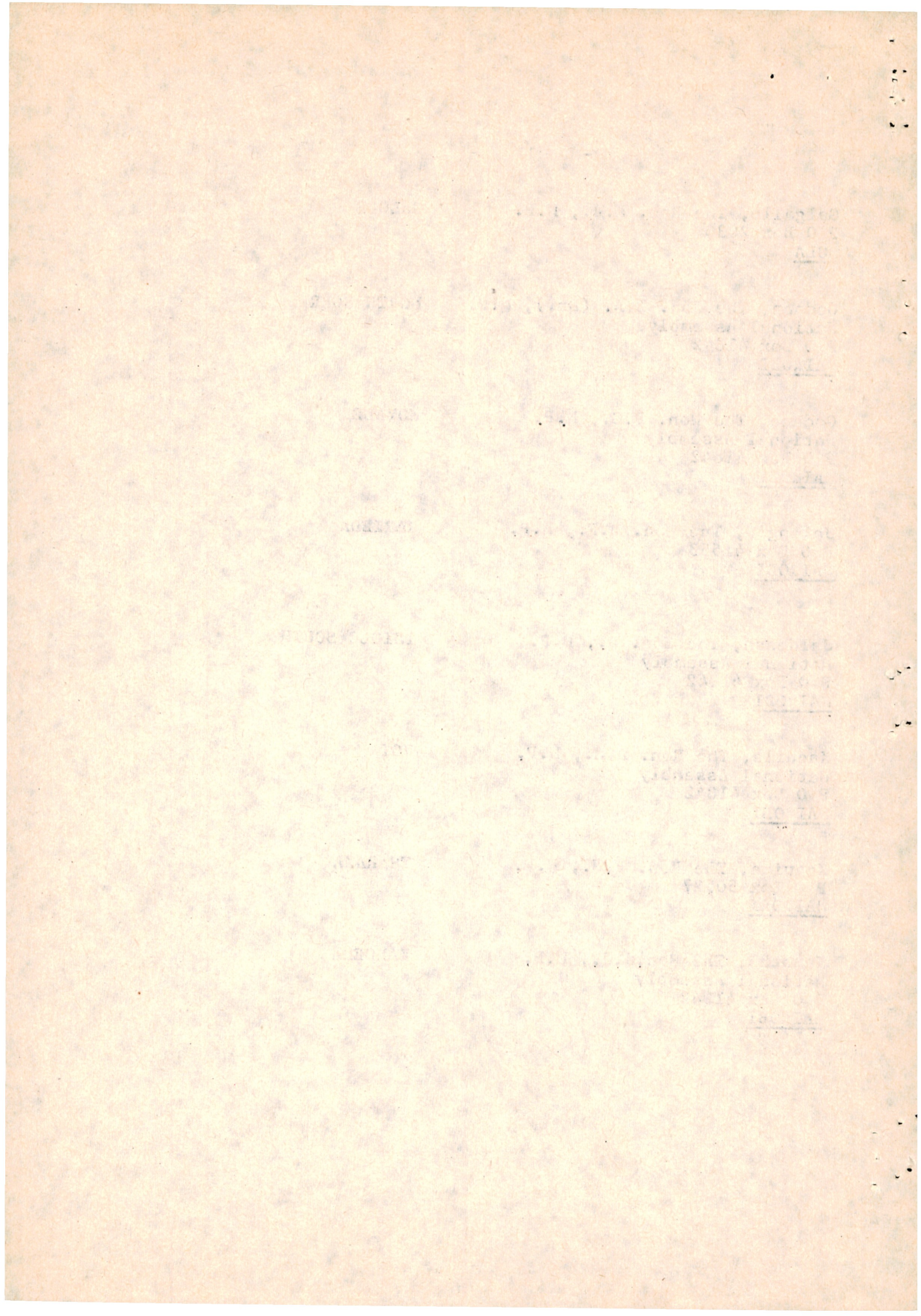
VOI

Kagwima, The Hon. F.N., M.P.  
P O Box 50527  
NAIROBI

THARAKA

Kamotho, The Hon. J.J., M.P.  
National Assembly  
P O Box 41842  
NAIROBI

KANCEMA



Kanuren, The Hon. W.R., M.P.  
National Assembly  
P O Box 41842  
NAIROBI

BARINGO NORTH

Kanuyu, The Hon. C.K., M.P.  
National Assembly  
P O Box 41842  
NAIROBI

DAGORETTI

Kaparo, The Hon. F.K.K. ole, M.P.  
National Assembly  
P O Box 41842  
NAIROBI

LAIKIPIA EAST

Karauri, The Hon. H.A., M.P.  
P O Box 1172  
NERU

TIGANIA

Karaiti, The Hon. G.K., M.P.  
P O Box 44223  
NAIROBI

GICHUGU

Kariuki, The Hon. L.N., M.P.  
National Assembly  
P O Box 41842  
NAIROBI

MAKUYU

Karume, The Hon. J.N., M.P.  
National Assembly  
P O Box 41842  
NAIROBI

KIAMBAA

Kenh, The Hon. H.B., M.P.  
P O Box 43858  
NAIROBI

KALOLENI

Kibaki, The Hon. Mwai, M.P.  
National Assembly  
P O Box 41842  
NAIROBI

OTHAYA

1930

1931

1932

1933

1934

1935

1936

1937

1938

...

...

...

...

...

...

...

...

...

...

Kibugi, The Hon. W.K., M.P.  
National Assembly  
P O Box 41842  
NAIROBI

MWEA

Kiilu, The Hon. S.K., M.P.  
National Assembly  
P O Box 41842  
NAIROBI

MASINGA

Kilikú, The Hon. J.K., M.P.  
P O Box 95330  
MOBEASA

CHANGAMBE

Kinani, The Hon. W.H., M.P.  
P O Box 49144  
NAIROBI

KANDARA

Kinemia, The Hon. A.K., M.P.  
P O Box 1169  
NAKURU

NAKURU TOWN

Kinemia, The Hon. J.H., M.P.  
National Assembly  
P O Box 41842  
NAIROBI

KINANGOP

Kinyanjui, The Hon. A.K., M.P.  
National Assembly  
P O Box 41842  
NAIROBI

LARI

Kinyanjui, The Hon. P.K., M.P.  
National Assembly  
P O Box 41842  
NAIROBI

KIKUYU

Kipkorir, The Hon. R.K., M.P.  
P O Box 451  
ITEN

KERIO EAST



Kiplagat, The Hon. L.K., M.P.  
National Assembly  
P O Box 41842  
NAIROBI

BARINGO SOUTH

Kirima, The Hon. G.K., M.P.  
National Assembly  
P O Box 41842  
NAIROBI

STAREHE

Kirwa, The Hon. K.R. arap, M.P.  
National Assembly  
P O Box 41842  
NAIROBI

CHERANGANI

Kisiero, The Hon. W. , M.P.  
National Assembly  
P O Box 41842  
NAIROBI

MT. ELGON

Kitele, The Hon. L, M.P.  
National Assembly  
P O Box 41842  
NAIROBI

KATHIANI

Kikwai, The Hon. W.K., M.P.  
National Assembly  
P O Box 41842  
NAIROBI

KIPKELION

Kombo, The Hon. D.O., M.P.  
P O Box 1202  
KISII

MUGIRANGO HAATE

Kones, The Hon. K.K., M.P.  
National Assembly  
P O Box 41842  
NAIROBI

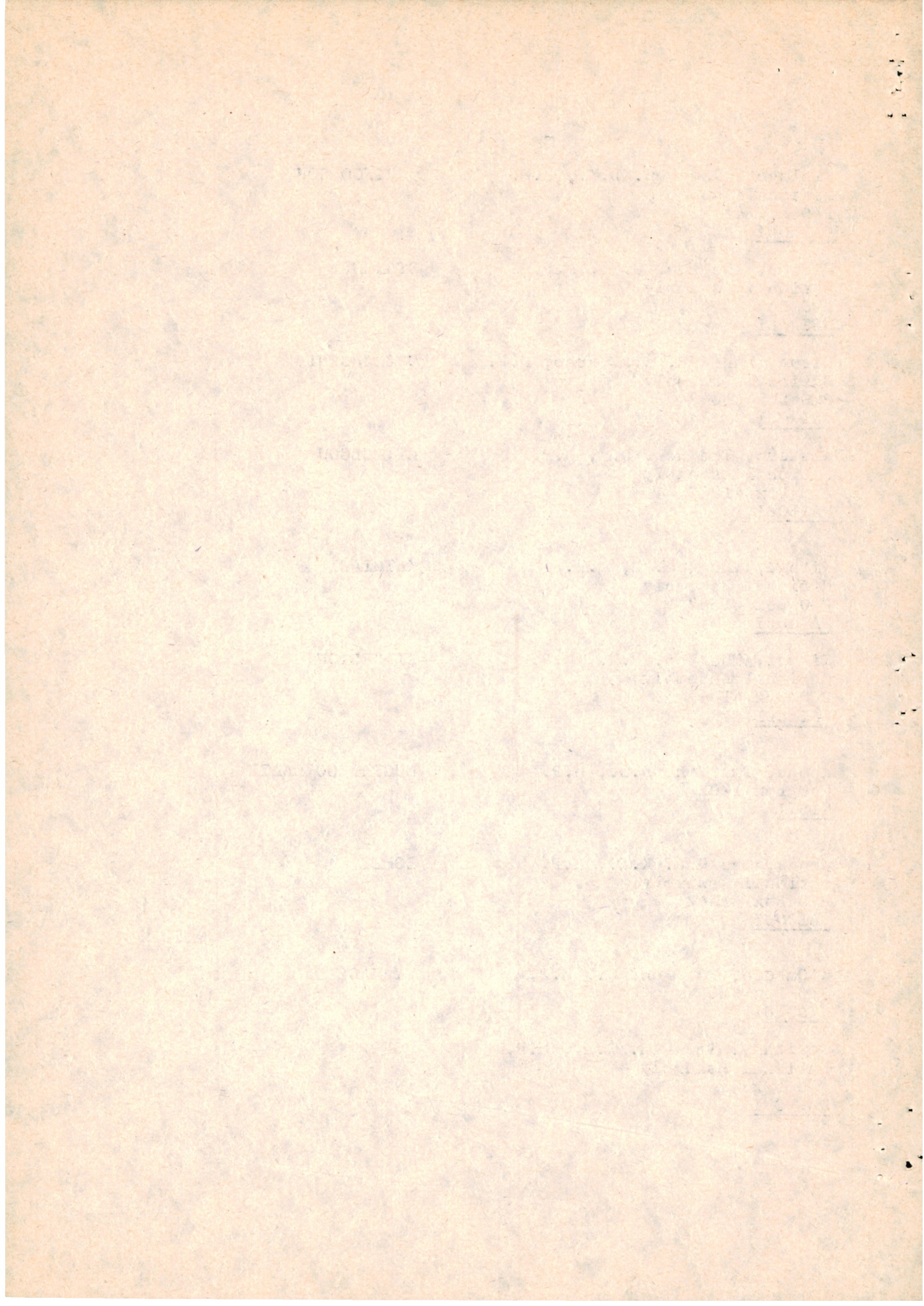
BOMET

K'Ombudo, The Hon. O., M.P.  
P O Box 920  
KISUMU

NYAKACH

Kositany, The Hon. B.K., M.P.  
National Assembly  
P O Box 41842  
NAIROBI

MOSOP



Kubo, The Hon. H., M.P.  
National Assembly  
P O Box 41842  
NAIROBI

TAVETA

Kuguru, The Hon. D.N., M.P.  
National Assembly  
P O Box 41842  
NAIROBI

MATHIRA

Kuria, The Hon. J.M., M.P.  
National Assembly  
P O Box 41842  
NAIROBI

NAKURU NORTH

Kyalo, The Hon. J., M.P.  
National Assembly  
P O Box 41842  
NAIROBI

MACHAKOS TOUR

Kyonda, The Hon. S., M.P.  
P O Box 4  
KATHIONZHENI, MACHAKOS

MAKUENI

Lagat, The Hon. F.T., M.P.  
National Assembly  
P O Box 41842  
NAIROBI

ELDORET EAST

Lalampaa, The Hon. J.H.K., M.P.  
National Assembly  
P O Box 41842  
NAIROBI

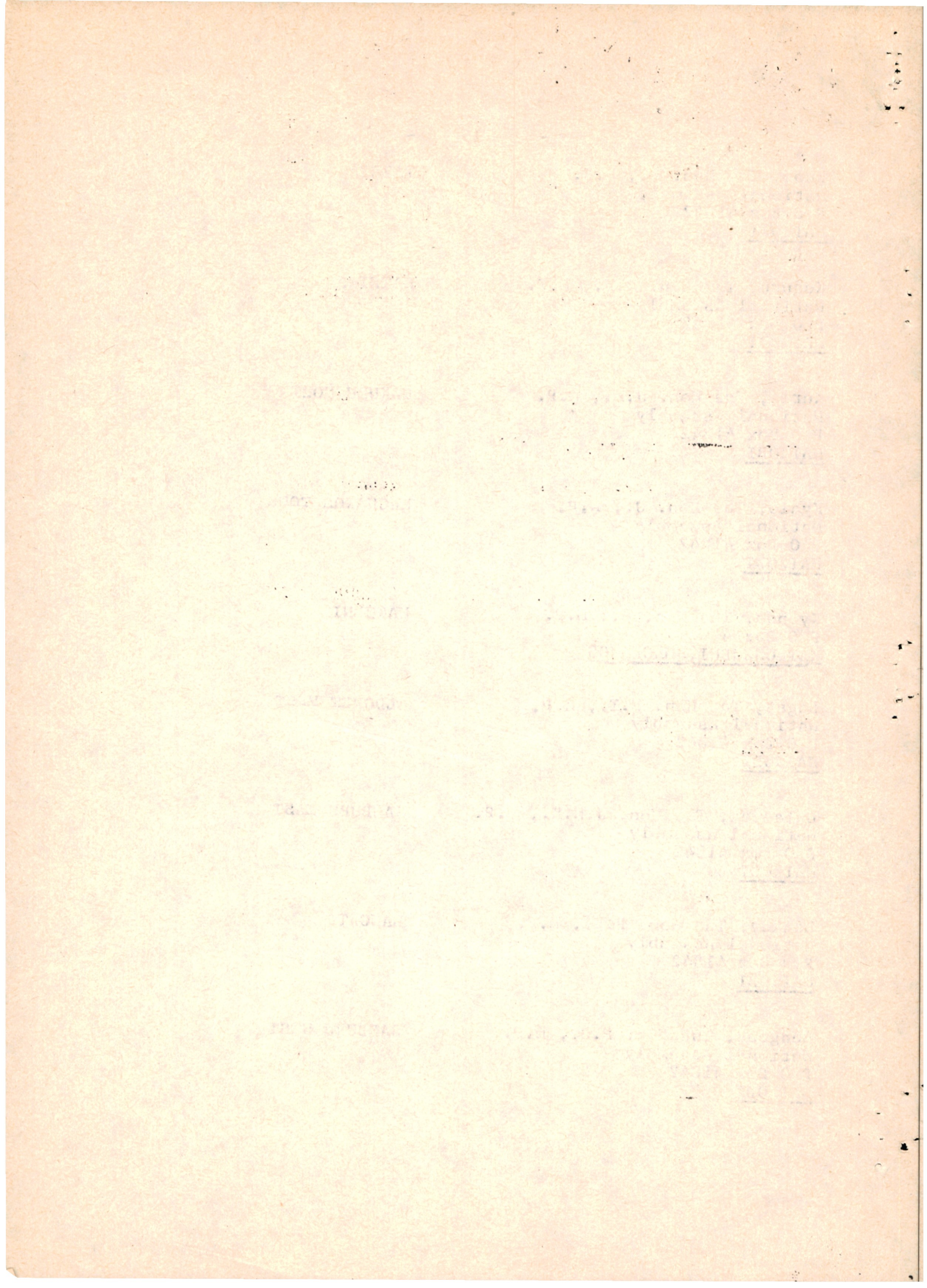
SAMBURU EAST

Leakey, The Hon. P.E., M.P.  
National Assembly  
P O Box 41842  
NAIROBI

LANGATA

Lengees, The Hon. P.S., M.P.  
National Assembly  
P O Box 41842  
NAIROBI

SAMBURU WEST



Lewa, The Hon. T.M., M.P.  
P O Box 60763  
NAIROBI

BAHARI

Lijoodi, The Hon. J.L., M.P.  
P O Box 47202  
NAIROBI

SHINYALU

Lomada, The Hon. C.H., M.P.  
P O Box 201  
KAPENGURIA

SIGOR

Lotim, The Hon. E.L., M.P.  
P O Box 141  
KAPENGURIA

KAPENGURIA

Lugonzo, The Hon. S., M.P.  
National Assembly  
P O Box 41842  
NAIROBI

IKOLOMANI

Madhubuti, The Hon. H.H., M.P.  
National Assembly  
P O Box 41842  
NAIROBI

LAMU EAST

Magara, The Hon. Z.H., M.P.  
P O box 801  
KISII

BOMACHOGE

Magugu, The Hon. A.K., M.P.  
National Assembly  
P O Box 41842  
NAIROBI

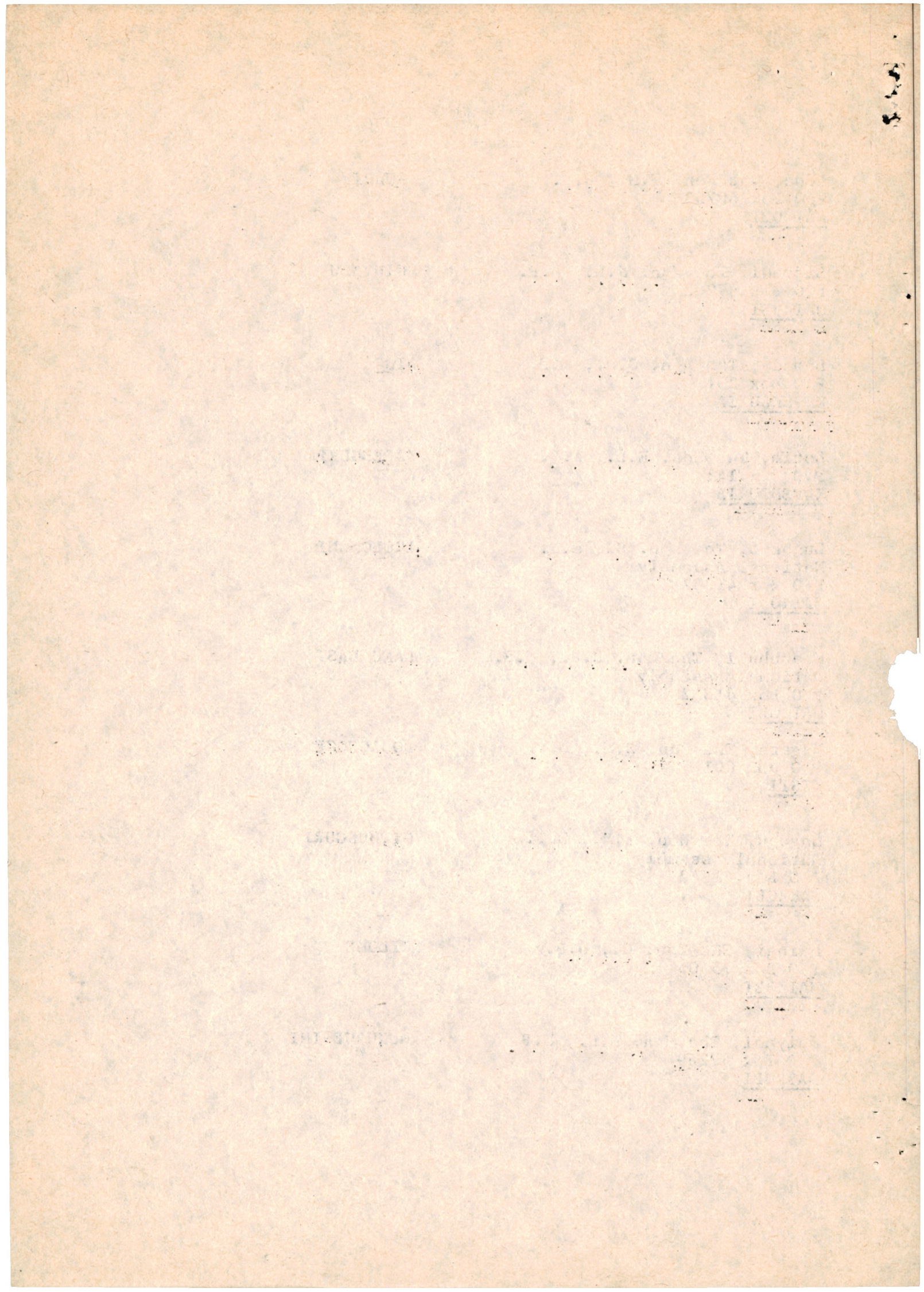
GITHUNGURI

Maingi, The Hon. G., M.P.  
P O Box 75605  
NAIROBI

KILOME

Maiyani, The Hon. N.N., M.P.  
P O Box 47269  
NAIROBI

MUKURWE-INI



Makau, The Hon. J.H., M.P.  
P O Box 73146  
NAIROBI

MEOOMI

Makhanu, The Hon. H.S., M.P.  
P O Box 137  
BUNGOLA

KANDUYI

Malebe, The Hon. J., M.P.  
National Assembly  
P O Box 41842  
NAIROBI

IGEMBE

Mang'oli, The Hon. J., M.P.  
National Assembly  
P O Box 41342  
NAIROBI

WEBUYE

Masinde, The Hon. P.S.W., M.P.  
P O Box 49207  
NAIROBI

NAMBALE

Mate, The Hon. S., M.P.  
P O Box 1160  
EMBU

SIKAKAGO

Mbai, The Hon. P.N., M.P.  
National Assembly  
P O Box 41842  
NAIROBI

MUTOBO

Mbela, The Hon. D.H., M.P.  
National Assembly  
P O Box 41842  
NAIROBI

MUNDANYI

Mbori, The Hon. J.E., M.P.  
National Assembly  
P O Box 41842  
NAIROBI

KASIPUL/KABONDO

1-00-1  
1-00-2

1-00-3  
1-00-4

1-00-5  
1-00-6

1-00-7  
1-00-8

1-00-9  
1-00-10

1-00-11  
1-00-12

1-00-13  
1-00-14

1-00-15  
1-00-16

1-00-17  
1-00-18

1-00-19  
1-00-20

1-00-21  
1-00-22

1-00-23  
1-00-24

Mcharo, The Hon. E.M., M.P.  
National assembly  
P O Box 41842  
NAIROBI

MUATATE

Mibei, The Hon. T.K., M.P.  
P O Box 1014  
KERICHO

BURET

Midika, The Hon. M.C.O., M.P.  
P O Box 78  
MIVANI

MUHORONI

Misoi, The Hon. J.K. (Dr.), M.P.  
P O Box 1571  
ELDORET

ELDORET SOUTH

M'Maitisi, The Hon. V.S., M.P.  
P O Box 72245  
NAIROBI

NAMISI

M'ibijjiwe, The Hon. K., M.P.  
National Assembly  
P O Box 41842  
NAIROBI

SOUTH IMENTI

M'Bukindia, The Hon. K., M.P.  
P O Box 1449  
NERU

CENTRAL IMENTI

Mohamed, The Hon. A.I., M.P.  
National Assembly  
P O Box 41842  
NAIROBI

WAJIR WEST

Mohamed, The Hon. M.M., M.P.  
National Assembly  
P O Box 41842  
NAIROBI

DUJIS

1910

Chicago, Ill. 1910  
P. O. Box 1014  
St. Louis

1911

Chicago, Ill. 1911  
P. O. Box 1014  
St. Louis

1912

Chicago, Ill. 1912  
P. O. Box 1014  
St. Louis

1913

Chicago, Ill. 1913  
P. O. Box 1014  
St. Louis

1914

Chicago, Ill. 1914  
P. O. Box 1014  
St. Louis

1915

Chicago, Ill. 1915  
P. O. Box 1014  
St. Louis

1916

Chicago, Ill. 1916  
P. O. Box 1014  
St. Louis

1917

Chicago, Ill. 1917  
P. O. Box 1014  
St. Louis

1918

Chicago, Ill. 1918  
P. O. Box 1014  
St. Louis

Moi, H.E. The Hon. D.T. arap, M.P.      BARINGO CENTRAL  
 National Assembly  
 P O Box 41842  
NAIROBI

Mokku, The Hon. C.C., M.P.              ISIOLO NORTH  
 National Assembly  
 P O Box 41842  
NAIROBI

Momanyi, The Hon. A.H.O., M.P.        ~~KITHITU MASABA~~  
 P O Box ~~56147~~  
NAIROBI

Momanyi, The Hon. P.K. (Dr.), M.P.    BONCHARI  
 P O Box 26  
KISII

Moturi, The Hon. N., M.P.              NORTH MUGIRANGO/BORABU  
 National Assembly  
 P O Box 41842  
NAIROBI

Mudavadi, The Hon. W.M., M.P.        ~~SABATIA~~  
 National Assembly  
 P O Box 41842  
NAIROBI

Muhoho, The Hon. G.K., M.P.          JUJA  
 National Assembly  
 P O Box 41842  
NAIROBI

Mukuna, The Hon. S., M.P.              EMUHAYA  
 National Assembly  
 P O Box 41842  
NAIROBI

... ..  
... ..  
... ..

... ..  
... ..  
... ..

... ..  
... ..  
... ..

... ..  
... ..  
... ..

... ..  
... ..  
... ..

... ..  
... ..  
... ..

... ..  
... ..  
... ..

... ..  
... ..  
... ..

Muliro, The Hon. J., M.P. National Assembly P O Box 41842 <u>NAIROBI</u>	SIRISIA
Mungai, The Hon. J.N., M.P. P O Box 122 <u>ELBURGON</u>	MOLO
Mungai, The Hon. (Dr.) H., M.P. National Assembly P O Box 41842 <u>NAIROBI</u>	WESTLANDS
Munyi, The Hon. K., M.P. National Assembly P O Box 41842 <u>NAIROBI</u>	RUNYENJES
Muregi, The Hon. J.K., M.P. National Assembly P O Box 41842 <u>NAIROBI</u>	KIPIPIRI
Mureithi, The Hon. J.H., M.P. P O Box 50228 <u>NAIROBI</u>	KIENI
Murukia, The Hon. D.N., M.P. P O Box 772 <u>NYAMURURU</u>	LAIKIPIA WEST
Musyoka, The Hon. S.K., M.P. National Assembly P O Box 41842 <u>NAIROBI</u>	KITUI NORTH
Mutiso, The Hon. G., M.P. P O Box 40953 <u>NAIROBI</u>	YATTA

1917

THE BOARD OF  
MANAGEMENT

1918

THE BOARD OF  
MANAGEMENT

1919

THE BOARD OF  
MANAGEMENT

1920

THE BOARD OF  
MANAGEMENT

1921

THE BOARD OF  
MANAGEMENT

1922

THE BOARD OF  
MANAGEMENT

1923

THE BOARD OF  
MANAGEMENT

1924

THE BOARD OF  
MANAGEMENT

1925

THE BOARD OF  
MANAGEMENT

Mutua, The Hon. I.N., M.P. P O Box 76 <u>CHUKA</u>	NITHI
Muturia, The Hon. J., M.P. National Assembly P O Box 41842 <u>NAIROBI</u>	NTONYIRI
Mutwol, The Hon. P., M.P. National Assembly P O Box 41842 <u>NAIROBI</u>	KERIO WEST
Nwanzandi, The Hon. K.B., M.P. National Assembly P O Box 41842 <u>NAIROBI</u>	MSAMBWENI
Nwangale, The Hon. E., M.P. National Assembly P O Box 41842 <u>NAIROBI</u>	KIMILILI
Nwaura, The Hon. S.N., M.P. P O Box 22185 <u>NAIROBI</u>	LIMURU
Nwendwa, The Hon. K., M.P. P O Box 46271 <u>NAIROBI</u>	KITUI WEST
Nwenje, The Hon. D., M.P. P O Box 59099 <u>NAIROBI</u>	EMBAKASI
Nweu, The Hon. E., M.P. P O Box 147 <u>KITUI</u>	MUTITO

The Hon. J. M. ...  
 ...  
 ...

The Hon. J. M. ...  
 ...  
 ...

The Hon. J. M. ...  
 ...  
 ...

The Hon. J. M. ...  
 ...  
 ...

The Hon. J. M. ...  
 ...  
 ...

The Hon. J. M. ...  
 ...  
 ...

The Hon. J. M. ...  
 ...  
 ...

The Hon. J. M. ...  
 ...  
 ...

Iiveru, The Hon. G.H.K., M.P. KIHARU  
National Assembly  
P O Box 41842  
NAIROBI

Iwidau, The Hon. A.A., M.P. LIKONI  
National Assembly  
P O Box 41842  
NAIROBI

Iwita, The Hon. U.E., M.P. KURIA  
National assembly  
P O Box 41842  
NAIROBI

Iabwera, The Hon. B., M.P. LUGARI  
National Assembly  
P O Box 41842  
NAIROBI

Iuya, The Hon. S.K. ole, M.P. NAROK SOUTH  
National Assembly  
P O Box 41842  
NAIROBI

Iang'ole, The Hon. P.L., M.P. KACHELIBA  
National Assembly  
P O Box 41842  
NAIROBI

Iassir, The Hon. S., M.P. IWITA  
P O Box 99126  
MOMBASA

Idetai, The Hon. A.M.(Mrs), M.P. KIBWEZI  
P O Box 53686  
NAIROBI

Idombi, The Hon. W., M.P. LURANBI  
P O Box 54  
NAMBACHA



<p>Wdang', The Hon. R.O., M.P. National Assembly P O Box 41842 <u>NAIROBI</u></p>	RANGWE
<p>Wdotto, The Hon. R.O., M.P. National Assembly P.O. Box 41842 <u>NAIROBI.</u></p>	KITUI CENTRAL
<p>Wdzai, The Hon. K., M.P. P.O. Box 565 <u>MALINDI</u></p>	MAGARINI
<p>Wgala, The Hon. N.K., M.P. National Assembly P O Box 41842 <u>NAIROBI</u></p>	GANZE
<p>Wgaruro, The Hon. G., M.P. P O Box 73755 <u>NAIROBI</u></p>	NAKURU EAST
<p>Wgutu, The Hon. J.K., M.P. National Assembly P O Box 41842 <u>NAIROBI</u></p>	KANGUNDO
<p>Wjiru, The Hon. J.N., M.P. National Assembly P O Box 41842 <u>NAIROBI</u></p>	NDIA
<p>Wooru, The Hon. A.H., M.P. P O Box 61029 <u>NAIROBI</u></p>	MANDERA CENTRAL
<p>Wtimana, The Hon. W.R. ole, M.P. National Assembly P O Box 41842 <u>NAIROBI</u></p>	NAROK NORTH

1  
2  
3  
4  
5  
6  
7  
8  
9  
10  
11  
12  
13  
14  
15  
16  
17  
18  
19  
20  
21  
22  
23  
24  
25  
26  
27  
28  
29  
30  
31  
32  
33  
34  
35  
36  
37  
38  
39  
40  
41  
42  
43  
44  
45  
46  
47  
48  
49  
50  
51  
52  
53  
54  
55  
56  
57  
58  
59  
60  
61  
62  
63  
64  
65  
66  
67  
68  
69  
70  
71  
72  
73  
74  
75  
76  
77  
78  
79  
80  
81  
82  
83  
84  
85  
86  
87  
88  
89  
90  
91  
92  
93  
94  
95  
96  
97  
98  
99  
100

THE STATE

OF CALIFORNIA

County of \_\_\_\_\_  
City of \_\_\_\_\_

Know all men

that \_\_\_\_\_  
of the County of \_\_\_\_\_  
State of California

do hereby certify

that \_\_\_\_\_  
is the true and correct copy  
of the \_\_\_\_\_

of \_\_\_\_\_

\_\_\_\_\_

\_\_\_\_\_

\_\_\_\_\_

\_\_\_\_\_

\_\_\_\_\_

\_\_\_\_\_

\_\_\_\_\_

\_\_\_\_\_

\_\_\_\_\_

Nuno, The Hon. S.A., M.P. National Assembly <u>GARISSA</u>	LADGER
Nyagah, The Hon. J.J.H., M.P. National Assembly P O Box 41842 <u>NAIROBI</u>	GACHOKA
Nyakiamo, The Hon. P.C.J.O., M.P. P O Box 55761 <u>NAIROBI</u>	MBITA
Obure, The Hon. C.M., M.P. National Assembly P O Box 41842 <u>NAIROBI</u>	BOBASI
Ogingo, The Hon. M.O., M.P. National Assembly P O Box 41842 <u>NAIROBI</u>	NDHIWA
Ogle, The Hon. H.A., M.P. National Assembly P O Box 41842 <u>NAIROBI</u>	NAJIR SOUTH
Ogot, The Hon. G. (Mrs), M.P. National Assembly P O Box 41842 <u>NAIROBI</u>	GEM
Ogur, The Hon. T.O.O., M.P. National Assembly P O Box 41842 <u>NAIROBI</u>	NYATIKE
Okondo, The Hon. P.H., M.P. P O Box 30727 <u>NAIROBI</u>	BUNYALA

1900, The Hon. S.A. ...  
National Assembly  
P.O. Box 1122  
Lagos

1900, The Hon. S.A. ...  
National Assembly  
P.O. Box 1122  
Lagos

1900, The Hon. P.O. ...  
National Assembly  
P.O. Box 1122  
Lagos

1900, The Hon. S.A. ...  
National Assembly  
P.O. Box 1122  
Lagos

1900, The Hon. S.A. ...  
National Assembly  
P.O. Box 1122  
Lagos

1900, The Hon. S.A. ...  
National Assembly  
P.O. Box 1122  
Lagos

1900, The Hon. S.A. ...  
National Assembly  
P.O. Box 1122  
Lagos

1900, The Hon. S.A. ...  
National Assembly  
P.O. Box 1122  
Lagos

1900, The Hon. S.A. ...  
National Assembly  
P.O. Box 1122  
Lagos

Okwanyo, The Hon. J.H., M.P. National Assembly P O Box 41842 <u>NAIROBI</u>	MIGORI
Okwara, The Hon. J.A.O., M.P. National Assembly P O Box 41842 <u>NAIROBI</u>	BUTERE
Oloo-Aringo, The Hon. P.C., M.P. National Assembly P O Box 41842 <u>NAIROBI</u>	ALEGO
Oluoch, The Hon. (Dr) G.P., M.P. National Assembly P O Box 41842 <u>NAIROBI</u>	BONDO
Omanga, The Hon. A.J., M.P. National Assembly P O Box 41842 <u>NAIROBI</u>	NYARIBARI-CHACHE
Omido, The Hon. F.E., M.P. National Assembly P O Box 41842 <u>NAIROBI</u>	MAKADARA
Omino, The Hon. J.P., M.P. National Assembly P O Box 41842 <u>NAIROBI</u>	KISUMU TOWN
Ondiek, The Hon. S.A.O., M.P. National Assembly P O Box 41842 <u>NAIROBI</u>	UGENYA

1900

1901

1902

1903

1904

1905

1906

1907

Ongeri, The Hon. (Prof) S.K., M.P.      NYARIBARI MASABA  
National Assembly  
P O Box 41842  
NAIROBI

Onyancha, The Hon. D.A., M.P.      WEST MUGIRANGO  
National Assembly  
P O Box 41842  
NAIROBI

Onyonka, The Hon. (Dr) Z.T., M.P.      KITUTU CHACHE  
National Assembly  
P O Box 41842  
NAIROBI

Otieno, The Hon. D.A., M.P.      RONGO  
National Assembly  
P O Box 41842  
NAIROBI

Otwani, The Hon. P.A., M.P.      AMAGORO  
P O Box 99  
BUSIA

Owuor, The Hon. J.H., M.P.      NYANDO  
National Assembly  
P O Box 41842  
NAIROBI

Parsaoti, The Hon. G.K., M.P.      KAJIADO CENTRAL  
Ilpolosat Ranch  
P O KONZA

Said, The Hon. H.S., M.P.      KISAUNI  
P O Box 84530  
MOBASA

Saitoti, The Hon. (Prof.) G., M.P.      KAJIADO NORTH  
National Assembly  
P O Box 41842  
NAIROBI

WASHINGTON

DEPARTMENT OF THE ARMY

OFFICE OF THE ADJUTANT GENERAL

ADJUTANT GENERAL'S OFFICE

ADJUTANT GENERAL'S OFFICE

ADJUTANT GENERAL'S OFFICE

ADJUTANT GENERAL'S OFFICE

ADJUTANT GENERAL'S OFFICE

ADJUTANT GENERAL'S OFFICE

ADJUTANT GENERAL'S OFFICE

ADJUTANT GENERAL'S OFFICE

ADJUTANT GENERAL'S OFFICE

ADJUTANT GENERAL'S OFFICE

ADJUTANT GENERAL'S OFFICE

ADJUTANT GENERAL'S OFFICE

ADJUTANT GENERAL'S OFFICE

ADJUTANT GENERAL'S OFFICE

ADJUTANT GENERAL'S OFFICE

Salat, The Hon. I.M., M.P. P O Box 491 <u>GARISSA</u>	FAFI
Sego, The Hon. K.K. arap, M.P. National Assembly P O box 41842 <u>NAIROBI</u>	TINDERET
Semo, The Hon. E.M., M.P. National Assembly P O Box 41842 <u>NAIROBI</u>	VINIGA
Singar, The Hon. P.L., M.P. P O Box 60 <u>LOITOKITOK</u>	KAJIADO SOUTH
Soi, The Hon. K. arap, M.P. National assembly P O Box 41842 <u>NAIROBI</u>	CHEPALUNGU
Sompisha, The Hon. F. ole, M.P. National Assembly P O Box 41842 <u>NAIROBI</u>	NAROK WEST
Terer, The Hon. J.K., M.P. National Assembly P O Box 41842 <u>NAIROBI</u>	KONOIN
Thuo, The Hon. F.M., M.P. National Assembly P O Box 41842 <u>NAIROBI</u>	KIGUMO
Tuva, The Hon. F.B., M.P. National Assembly P O Box 41842 <u>NAIROBI</u>	MALINDI

1901

1902

1903

1904

1905

1906

1907

1908

1909

... ..  
... ..  
... ..

... ..  
... ..  
... ..

... ..  
... ..  
... ..

... ..  
... ..  
... ..

... ..  
... ..  
... ..

... ..  
... ..  
... ..

... ..  
... ..  
... ..

... ..  
... ..  
... ..

... ..  
... ..  
... ..

<p>Tuya, The Hon. S. Ole, M.P. National Assembly P O Box 41842 <u>NAIROBI</u></p>	<p>NAROK SOUTH</p>
<p>Twarith, The Hon. S.K., M.P. P O Box UGINYANG <u>BARINGO</u></p>	<p>BARINGO EAST</p>
<p>Wabuge, The Hon. W., M.P. National Assembly P O Box 41842 <u>NAIROBI</u></p>	<p>SABOTI</p>
<p>Wagura, The Hon. F.K., M.P. National Assembly P O Box 41842 <u>NAIROBI</u></p>	<p>NDARAGWA</p>
<p>Waihenya, The Hon. N., M.P. National Assembly P O Box 41842 <u>NAIROBI</u></p>	<p>NYERI TOWN</p>
<p>Waithaka, The Hon. N.K., M.P. P O Box 11 <u>NYERI</u></p>	<p>TETU</p>
<p>Wakole, The Hon. A.S., M.P. National Assembly P O Box 41842 <u>NAIROBI</u></p>	<p>GARSEN</p>
<p>Wambua, The Hon. G.N., M.P. P O Box 211 <u>WASII</u></p>	<p>WUWALA</p>
<p>Wameyo, The Hon. W.E. (Dr), M.P. P O Box 82645 <u>WOMEASA</u></p>	<p>WUMIAS</p>

1900

1900  
1900  
1900

1900

1900  
1900  
1900

1900

1900  
1900  
1900

1900

1900  
1900  
1900

1900

1900  
1900  
1900

1900

1900  
1900  
1900

1900

1900  
1900  
1900

1900

1900  
1900  
1900

1900

1900  
1900  
1900

Wanjigi, The Hon. M., M.P.  
National Assembly  
P O Box 41842  
NAIROBI

KANUKUNJI

Mekasa, The Hon. M. (Dr.), M.P.  
P O Box 982  
VITALE

KWANZA

1900

1900  
1900  
1900  
1900

1900

1900  
1900  
1900  
1900

1900

1900  
1900  
1900  
1900

1900

1900  
1900  
1900  
1900

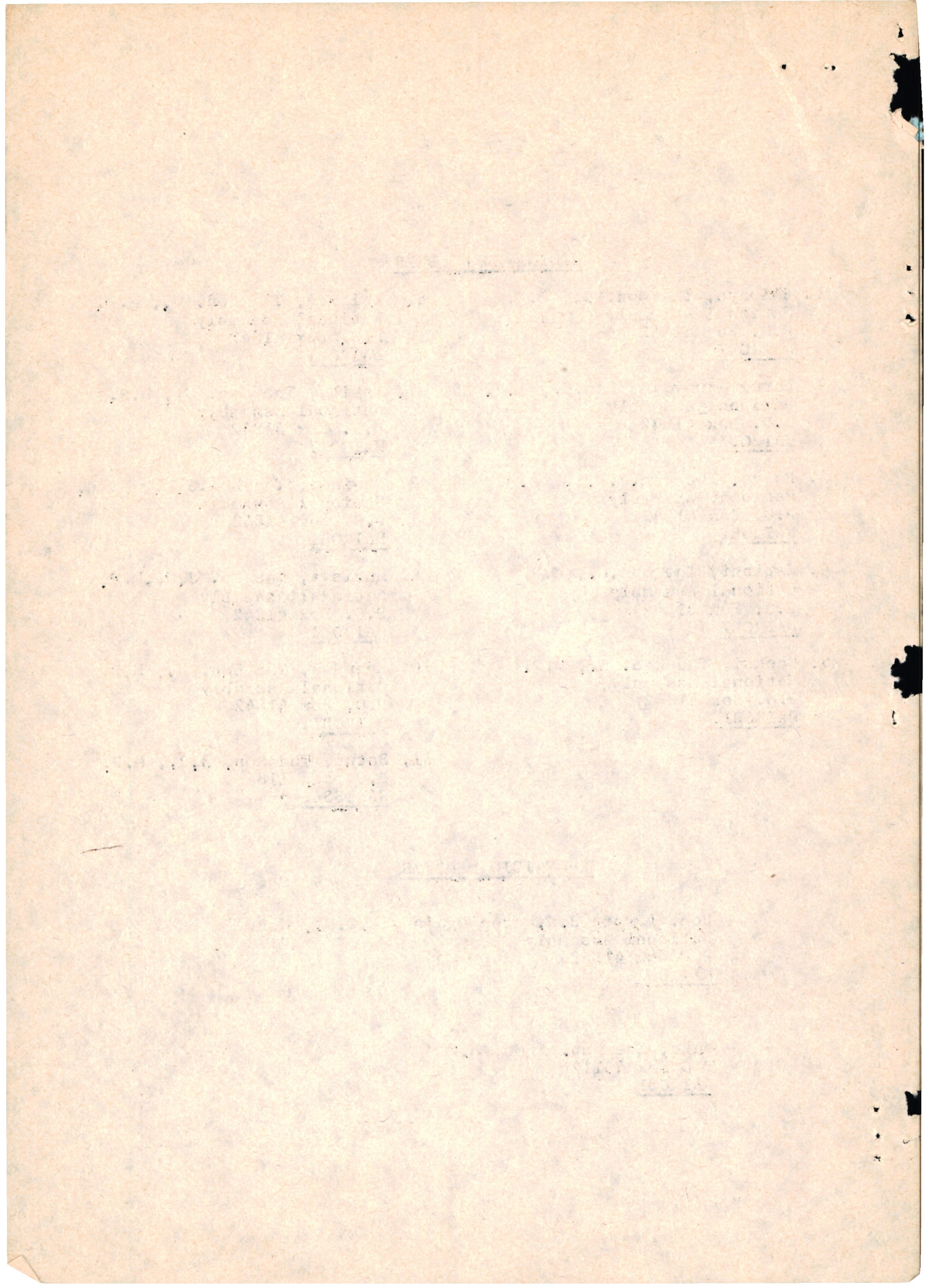
NOMINATED MEMBERS

1. Akibaya, The Hon. J., M.P.  
National Assembly  
P.O. Box 41842  
NAIROBI
2. Barng'etuny, The Hon. E., M.P.  
National Assembly  
P.O. Box 41842  
NAIROBI
3. Bonyo, The Hon. J.P.I., M.P.  
National Assembly  
P.O. Box 41842  
NAIROBI
4. Karingi, The Hon. M., M.P.  
National Assembly  
P.O. Box 41842  
NAIROBI
5. Gachui, The Hon. N., M.P.  
National Assembly,  
P.O. Box 41842  
NAIROBI.
6. Leitich, The Hon. U., M.P.  
National Assembly  
P.O. Box 41842  
NAIROBI
7. Mahihu, The Hon. E., M.P.  
National Assembly  
P.O. Box 41842  
NAIROBI
8. Nasinde, The Hon. J.W., M. P.  
National Assembly  
P.O. Box 41842  
NAIROBI
9. Mutisya, The Ho. J.M., M.P.  
National Assembly  
P.O. Box 41842  
NAIROBI
10. Hwendwa, The Hon. N., M.P.  
National Assembly  
P.O. Box 41842  
NAIROBI.
11. Satur, The Hon. A.R., M.P.  
P.O. Box 118  
GARISSA.

EX-OFFICIO MEMBERS

Hon. (Prof) J.K. arap Nge'no, E.G.H., M.P.  
National Assembly  
P O Box 41842  
NAIROBI

Wako, The Hon. Amos, M.P.  
P O Box 40112  
NAIROBI



STAFF OF THE NATIONAL ASSEMBLY

SPEAKER OF THE NATIONAL ASSEMBLY

The Hon. (Prof) J.K. arap Ng'eno, E.G.H., M.P.

DEPUTY SPEAKER AND CHAIRMAN OF COMMITTEES

The Hon. S.K. Musyoka, M.P.

CLERK OF THE NATIONAL ASSEMBLY

Mr. J.K. Masya

DEPUTY CLERK

Mr. S.W. Ndindiri

PRINCIPAL CLERK ASSISTANT

Mr. P.G. Gichohi  
Mr. Murumba Werunga  
Mr. J.H. Tsola

SENIOR CLERK ASSISTANT

Mr. P.O. Omolo

FIRST CLERK ASSISTANT

Mr. J.N. Mwangi  
Miss L.H. Wambua  
Mr. P. Nyakundi  
Mr. P.K. Langat

SECOND CLERK ASSISTANT

Mr. E.M. Yesse  
Mr. B.I. Otuya

THIRD CLERK ASSISTANT

Mr. J.G. Wanyoike  
Miss F.A. Atenyo

THE OFFICE OF THE ATTORNEY GENERAL

DEPARTMENT OF JUSTICE

Washington, D.C. 20530

UNITED STATES OF AMERICA

vs.

STATE OF CALIFORNIA

et al.

CRIMINAL CASE

No. 100-100000

RETURN OF GRAND JURORS

Filed for the Court

at Los Angeles, California

RETURN OF GRAND JURORS

at Los Angeles, California

RETURN OF GRAND JURORS

at Los Angeles, California

at Los Angeles, California

at Los Angeles, California

RETURN OF GRAND JURORS

at Los Angeles, California

at Los Angeles, California

RETURN OF GRAND JURORS

at Los Angeles, California

at Los Angeles, California

Singarau, The Hon. P.L., M.P.  
P O Box 60  
LOITOKITOK

KAJIADO SOUTH

Soi, The Hon. K. arap, M.P.  
National assembly  
P O Box 41842  
NAIROBI

CHEPALUNGU

Sompisha, The Hon. F. ole, M.P.  
National Assembly  
P O Box 41842  
NAIROBI

NAROK WEST

Terer, The Hon. J.K., M.P.  
National Assembly  
P O Box 41842  
NAIROBI

KONDIN

Thuo, The Hon. F.M., M.P.  
National Assembly  
P O Box 41842  
NAIROBI

KIGUNO

Tuva, The Hon. F.B., M.P.  
National Assembly  
P O Box 41842  
NAIROBI

MALINDI

Tuya, The Hon. S. Ole, M.P.  
National Assembly  
P O Box 41842  
NAIROBI

NAROK SOUTH

Twarith, The Hon. S.K., M.P.  
P O Box NGINYANG  
BARINGO

BARINGO EAST

Wabuge, The Hon. W., M.P.  
National Assembly  
P O Box 41842  
NAIROBI

SABOTI

