

COUNTY GOVERNMENT OF NAIROBI CITY



**THE NAIROBI CITY COUNTY ASSEMBLY
SECOND ASSEMBLY - (FOURTH SESSION)**

**REPORT ON THE FINDINGS ON THE COLLECTED VIEWS OF MEMBERS OF
THE PUBLIC ON THE PROPOSED REMOVAL FROM OFFICE, BY
IMPEACHMENT, OF HON. MIKE MBUVI SONKO, THE GOVERNOR OF
NAIROBI CITY COUNTY**

Dated: 3rd December, 2020

TABLE OF CONTENTS

1.0. INTRODUCTION..... 3

2.0. FINDINGS 3

 2.1. Demographics of the respondents..... 4

 3.0. Results..... 6

4.0. CONCLUSION 9

1.0. INTRODUCTION

In accordance with Article 196(b) of the Constitution of Kenya which require public participation in the legislative and other business of the Assembly and its Committees, the County Assembly sought views of the public on the Motion of removal of the Governor of Nairobi City County from Office, whose notice had been issued by the Minority Leader, Hon. Michael Ogada, on **Thursday, 26th November, 2020.**

In order to seek the views of the City residents, the County Assembly commissioned a survey by developing a simple questionnaire where residents were supposed to respond to various questions raised therein especially if they supported the impeachment Motion. The questionnaires were distributed across the eighty five (85) wards through the formal structures established by the County Assembly at the Ward level and vide an online platform. The survey was conducted between **Monday 30th November** and **Thursday, 3rd December 2020.**

It has been noted that the County Executive commissioned a separate survey from the one commissioned by the County Assembly. The said survey cannot be the basis of the public participation process envisioned under Article 196 of the Constitution since it was not commissioned by the Assembly. As such, its findings cannot be relied upon.

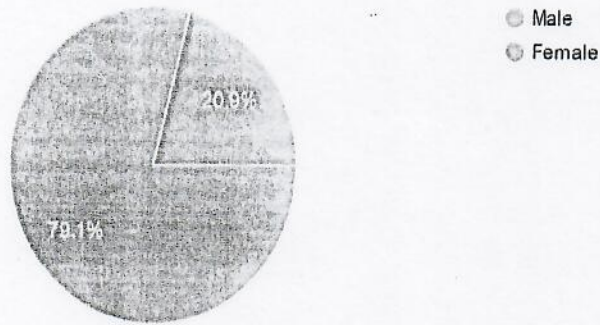
2.0. FINDINGS

One hundred (100) questionnaires were manually distributed across the County through the existing County Assembly Ward Office structures. Further, a version of digital the questionnaire was shared online via various media platforms accessed by a majority of Nairobi City residents (*attached is a sample of the questionnaire*). The survey raised questions on whether Nairobi residents were aware of the allegations raised in the Motion and whether they supported the impeachment Motion. At the close of the survey period, a total of 239 questionnaires were returned and analyzed as follows:-

2.1. Demographics of the respondents

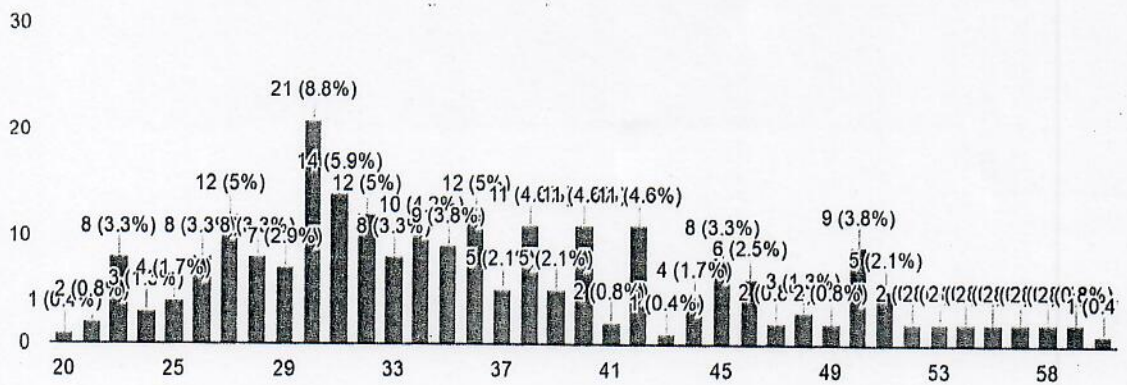
2.1.1. Gender

Gender
239 responses



2.1.2. Age

Age
239 responses



2.1.3. Registered Voters

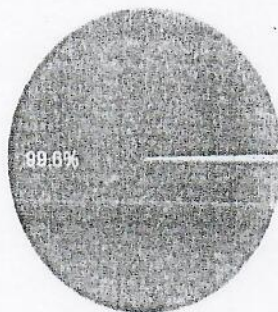
Registered Voter?
239 responses



- Yes
- No

2.1.4. Residence

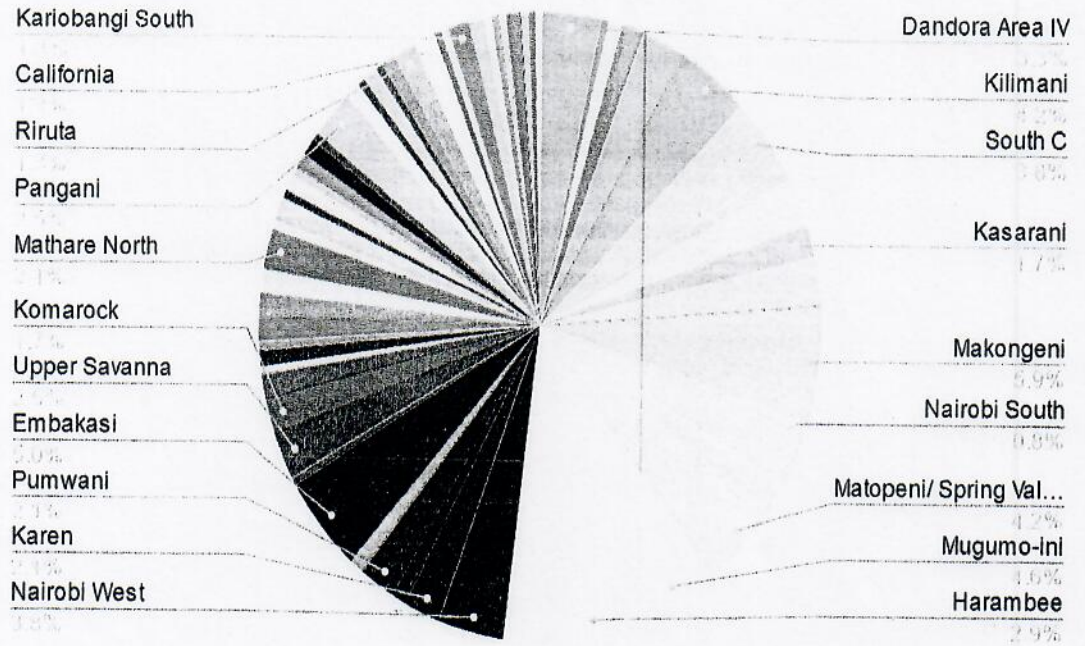
Resident in Nairobi City County?
239 responses



- Yes
- No

2.1.5. Wards Surveyed

Count of Ward

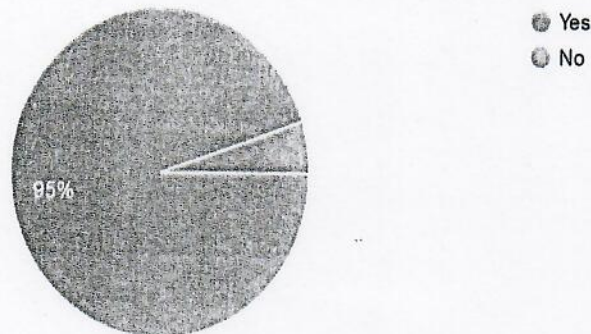


3.0. Results

3.1.1. Knowledge of the impeachment Motion and the grounds

1. Are you aware of the impeachment motion and the grounds of impeachment against the Governor of Nairobi City County?

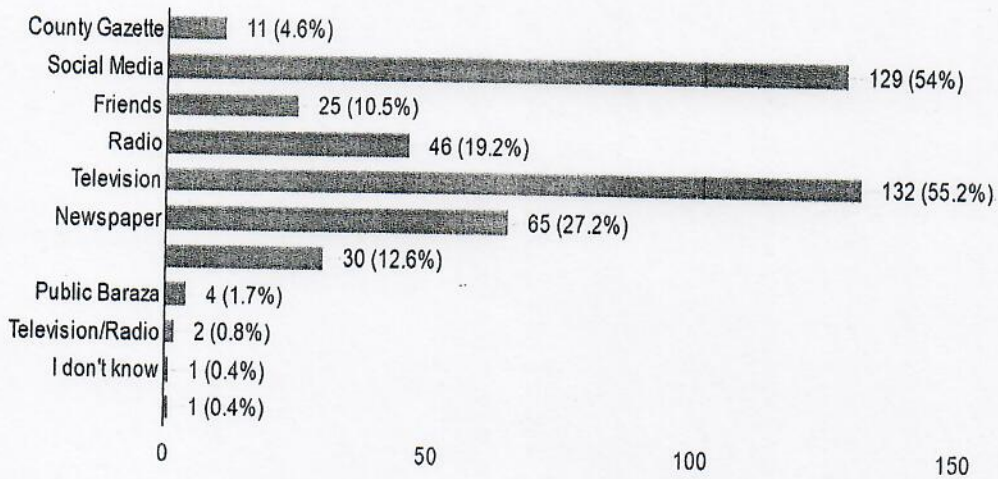
239 responses



3.1.2. How the Public new about the Motion and grounds

2. How did you know about the impeachment motion and grounds of impeachment? Can mark more than once

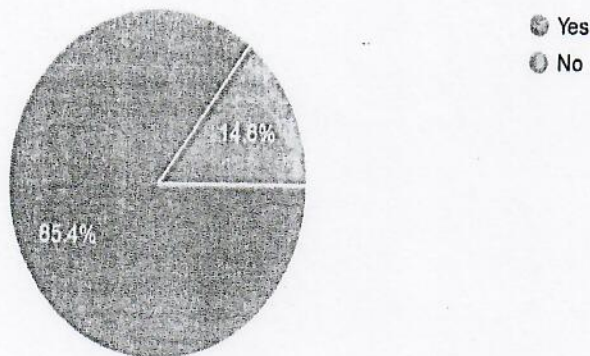
239 responses



3.1.3. Whether they are aware of the allegations raised against the Governor

3. Have you seen the allegations raised against HE the Governor of Nairobi City County?

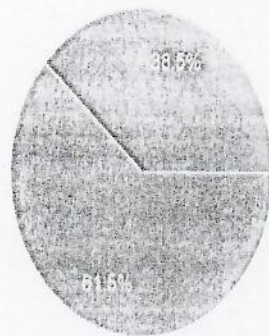
239 responses



3.1.4. Whether the allegations raised against the Governor call for his impeachment.

4. Do you think that the allegations raised, call for the impeachment of the Governor of Nairobi City County?

239 responses

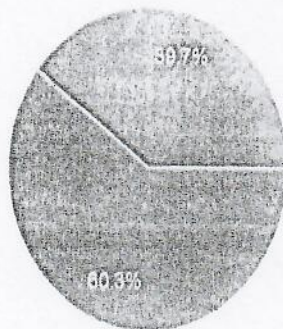


● Yes
● No

3.1.5. Whether they support the Motion of impeachment of the Governor or not.

5. Do you support the motion for the impeachment of the Governor of Nairobi City County?

239 responses



● Yes
● No

3.1.6. Reasons for supporting the Impeachment

- i) Failure to deliver on his mandate
- ii) Misbehaving in public and private life
- iii) Belittling H.E. the President
- iv) Miss-use of public funds under his watch.

4.0. CONCLUSION

An analysis of the collected data show that a majority of Nairobians support the removal of Governor Mike Mbuvi Sonko from Office. Further, a majority of Nairobi residents are aware of and support the reasons advanced by the Mover of the Motion for the removal.

Report compiled by County Assembly secretariat.

XXXXXXXXXXXXX END XXXXXXXXXXXXXXXXXXXXX

NAIROBI CITY COUNTY GOVERNMENT



**NAIROBI CITY COUNTY ASSEMBLY
SECOND ASSEMBLY
(FOURTH SESSION)**

QUESTIONNAIRE

Participation and feedback of the members of the public and registered voters in Nairobi City County on the Notice of impeachment issued to the County Assembly calling for the impeachment of **HE Mike Mbuvi Sonko, Governor Nairobi City County.**

The notice of impeachment is based on the following grounds;

1. **Gross violation of the Constitution; The County Governments Act, 2012; The Public Procurement and Disposal Act, 2015; and the Public Finance Management Act, 2012;**
2. **Abuse of Office;**
3. **Gross Misconduct; and**
4. **Crimes under National Law**

The questionnaire is an anonymous and does not take personal identifiable details of the interviewee.

NOTE: Mark where appropriate

PART A: DEMOGRAPHIC

GENDER: MALE FEMALE

**AGE: BELOW 18 YEARS.....ABOVE 18
YEARS.....**

REGISTERED VOTER:

YES.....NO.....

RESIDENT IN NAIROBI CITY COUNTY: YES.....

NO.....

WARD:

.....

PART B: QUESTIONS ON THE NOTICE OF IMPEACHMENT

1. Are you aware of the impeachment motion and the grounds of impeachment against the Governor Nairobi City County?

YES..... **NO**.....

2. How did you know about the impeachment motion and grounds of impeachment? **Can mark more than once**

- a) County Gazette.....
- b) Social Media.....
- c) Friends.....
- d) Radio.....
- e) Newspaper.....
- f) Member of County Assembly (MCA).....
- g) Public Baraza.....
- h) Other.....

3. Have you seen the allegations raised against HE the Governor of Nairobi City County? **YES**.....**NO**.....

4. Do you think that the allegations raised call for the impeachment of the Governor of Nairobi City County?

YES.....**NO**.....

5. Do you support the motion for the impeachment of the Governor of Nairobi City County? **YES**.....**NO**.....

6. State reasons for your answer in five (5) above.

.....

.....

.....

.....

.....